

Lyve1-IRES-Cre

Nomenclature	C57BL/6Smoc- <i>Lyve1</i> ^{em(IRES-Cre)Smoc}
Cat. NO.	NM-KI-220107
Strain State	Repository Live

Gene Summary

Gene Symbol Lyve1	Synonyms	Xlkd1; Lyve-1; Crsbp-1; 1200012G08Rik
	NCBI ID	114332
	MGI ID	2136348
	Ensembl ID	ENSMUSG00000030787
	Human Ortholog	LYVE1

Model Description

IRES-Cre expression cassette was knocked into the Lyve1 gene stop codon site.

Research Application: Cre mouse

*Literature published using this strain should indicate: Lyve1-IRES-Cre mice (Cat. NO. NM-KI-220107) were purchased from Shanghai Model Organisms Center, Inc..

Validation Data

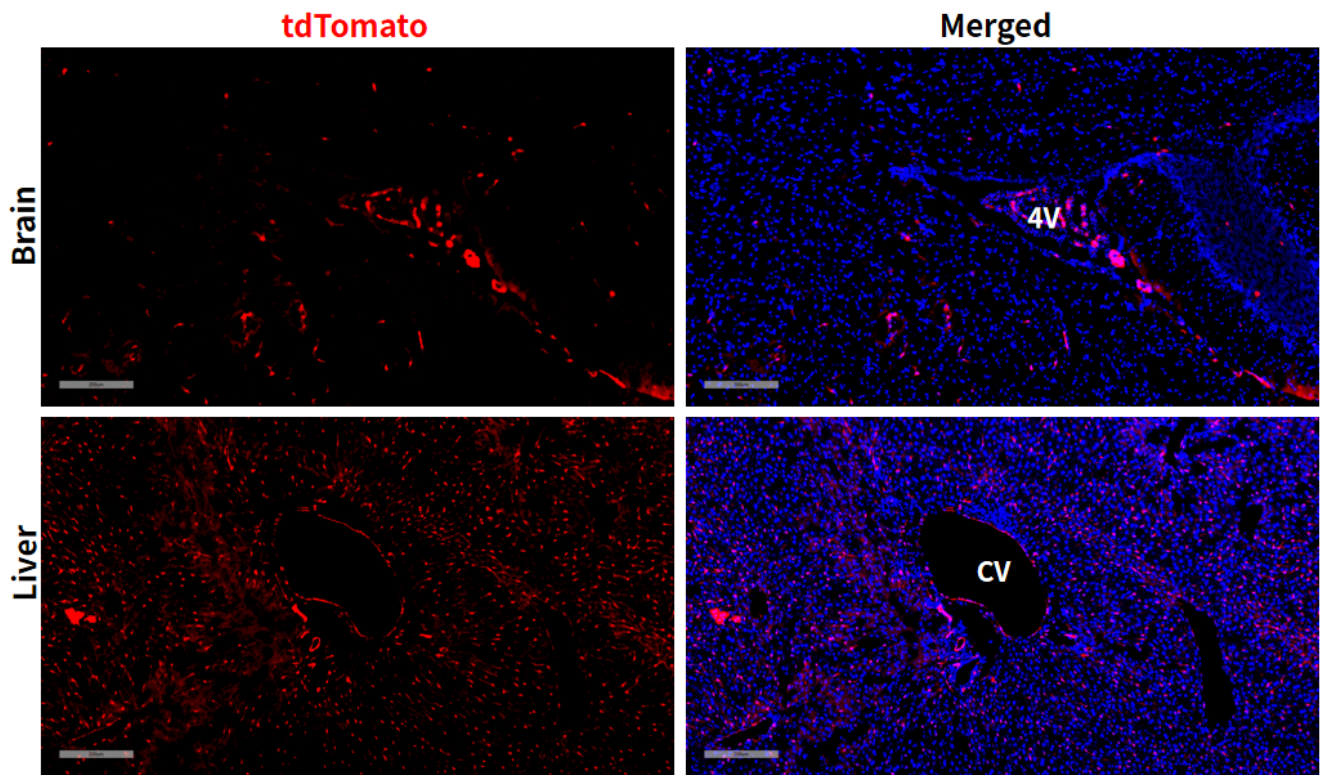


Fig1. Cre mediated recombination in brain and liver of $Lyve1^{Cre/+}; Rosa26^{tdTomato/+}$ mouse.

4V:Fourth ventricle; CV:Central vein;

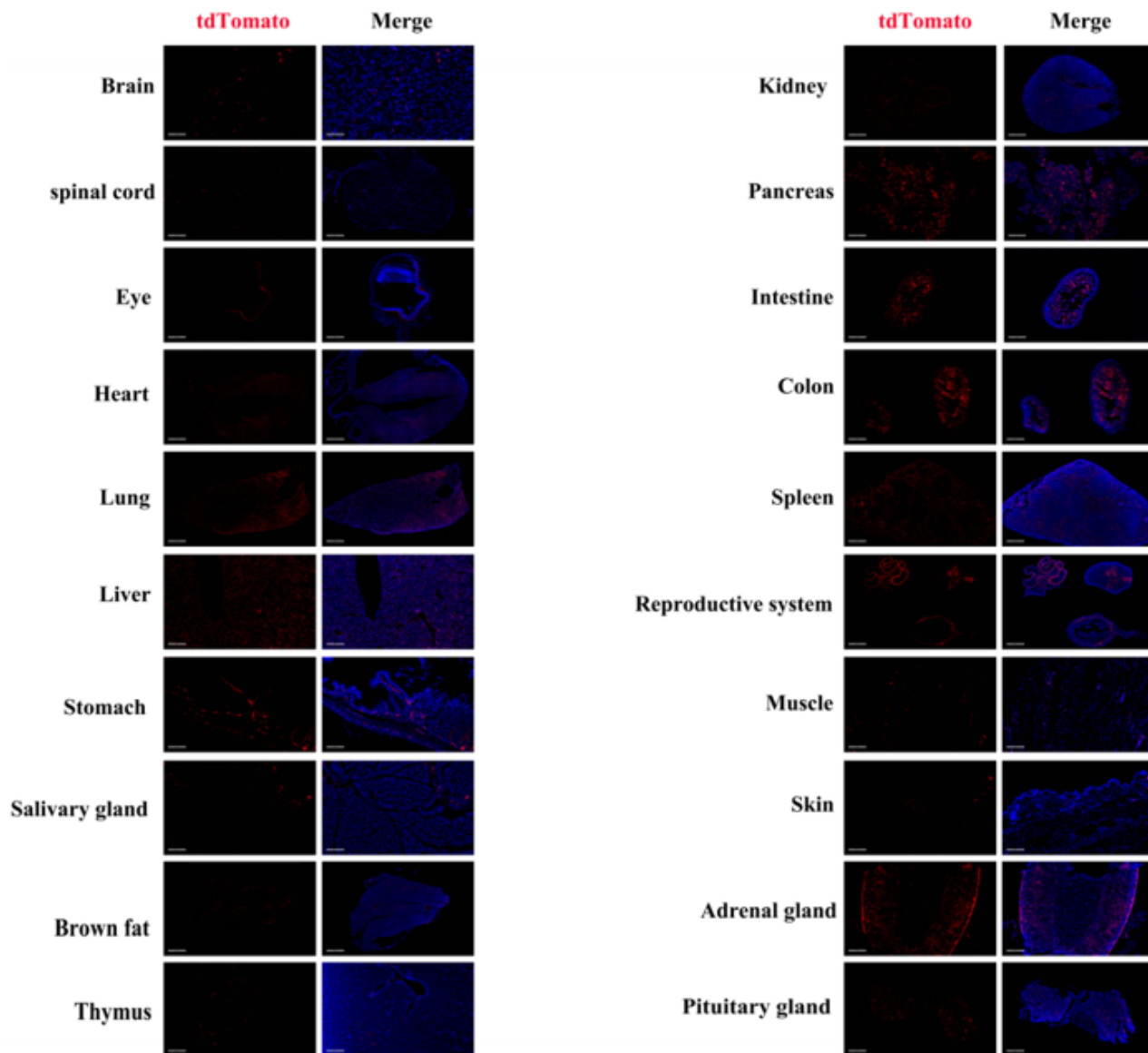


Fig2. Detection of tdTomato(red) in various tissues of *Lyve1^{Cre/+};Rosa26^{tdTomato/+}* mouse. Expression tissues include: brain, spinal cord, retina, heart, lungs, liver, stomach, salivary glands, brown fat, thymus, kidneys, pancreas, small intestine, colon, spleen, ovaries, muscles, skin, adrenal glands, pituitary gland. (6-weeks old, female) (For more detailed information please contact our technical advisor.)