

Foxp1-2A-Cre

Nomenclature	C57BL/6Smoc- <i>Foxp1</i> ^{em(2A-Cre)Smoc}
Cat. NO.	NM-KI-220118
Strain State	Sperm cryopreservation

Gene Summary

Gene Symbol Foxp1	Synonyms	AI461938; AW494214; 3110052D19Rik; 4932443N09Rik
	NCBI ID	108655
	MGI ID	1914004
	Ensembl ID	ENSMUSG00000030067
	Human Ortholog	FOXP1

Model Description

2A-Cre expression cassette was knocked into the Foxp1 gene stop codon site.

Research Application: Cre mouse

*Literature published using this strain should indicate: Foxp1-2A-Cre mice (Cat. NO. NM-KI-220118) were purchased from Shanghai Model Organisms Center, Inc..

Validation Data

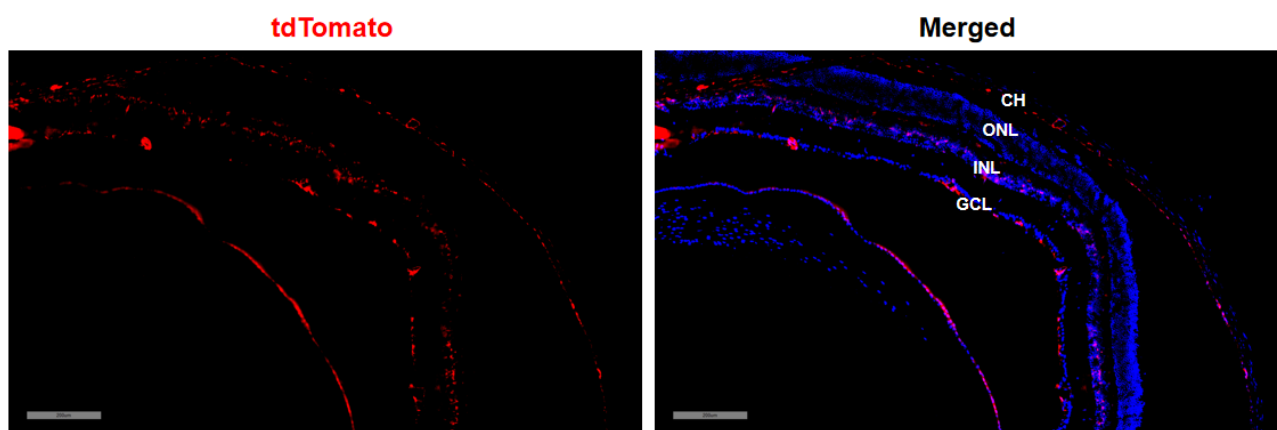


Fig1. Cre mediated recombination in retina of Foxp1^{Cre/+};Rosa26^{tdTomato/+} mouse.

(GCL, ganglion cell layer; INL, inner nuclear layer; ONL, outer nuclear layer; RPE, retinal pigment epithelium; CH, choroid)

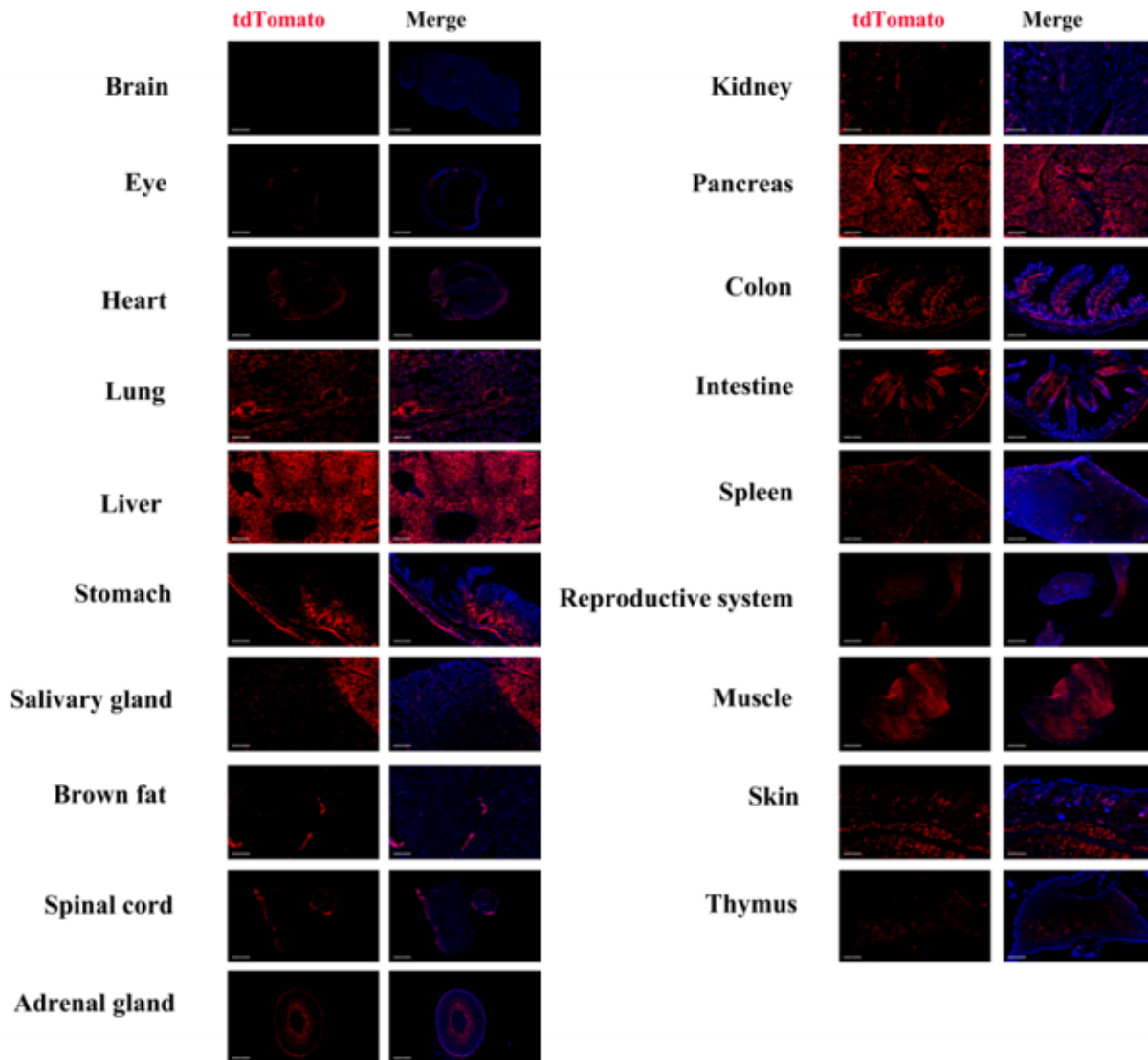


Fig2. Detection of tdTomato(red) in various tissues of *Foxp1^{cre/+};Rosa26^{tdTomato/+}* mouse. Expression tissues include: retina, heart, lung, liver, stomach, salivary gland, spinal cord, adrenal gland, kidney, pancreas, colon, small intestine, spleen, testis and epididymis, muscle, skin and thymus. A few cells expressed in brain, brown fat. (61-day old, male) (For more detailed information please contact our technical advisor.)