

Pdgfra-Dre

Nomenclature	C57BL/6Smoc- <i>Pdgfra</i> ^{em(Dre-WPRE-pA)Smoc}
Cat. NO.	NM-KI-220193
Strain State	Repository Live

Gene Summary

Gene Symbol Pdgfra	Synonyms	CD140a, Pdgfr-2, AI115593
	NCBI ID	18595
	MGI ID	97530
	Ensembl ID	ENSMUSG00000029231
	Human Ortholog	PDGFRA

Model Description

Dre-WPRE-pA expression cassette was knocked into the Pdgfra gene start codon site.

*Literature published using this strain should indicate: Pdgfra-Dre mice (Cat. NO. NM-KI-220193) were purchased from Shanghai Model Organisms Center, Inc..

Validation Data

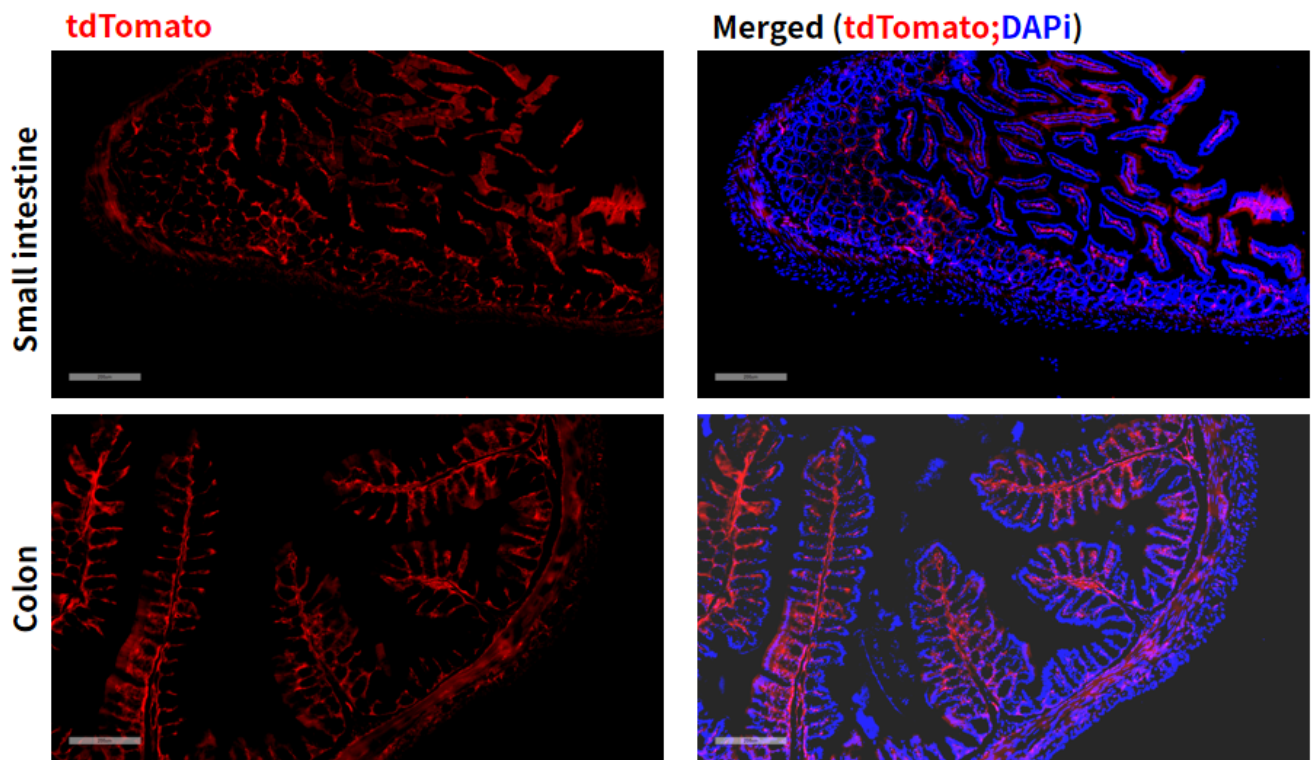


Fig1. Cre mediated recombination in small intestine and colon of *Pdgfra^{Dre/+}; Rosa26^{tdTomato/+}* mouse.

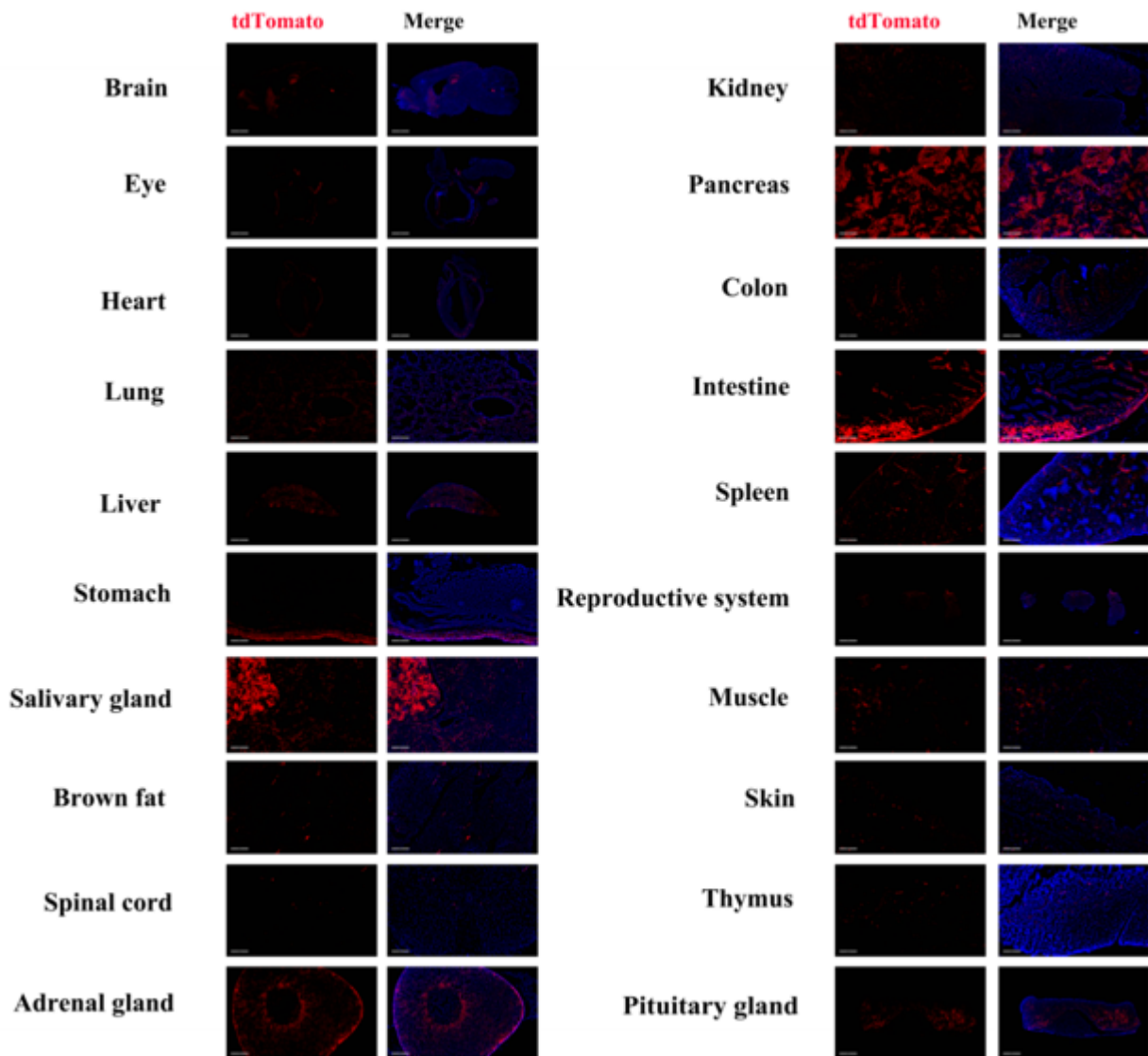


Fig2. Detection of tdTomato(red) in various tissues of *Pdgfra^{Dre/+}; Rosa26^{tdTomato/+}* mouse. Expression tissues include: brain, retina, heart, lung, liver, stomach, salivary gland, adrenal gland, kidney, pancreas, small and large intestine, spleen, testis, muscle, skin, thymus, pituitary. A few cells expressed in brown fat, spinal cord.(8.5-weeks old, male) (For more detailed information please contact our technical advisor.)