

# Foxl2-IRES-CreERT2

<b>Nomenclature</b>	C57BL/6Smoc- <i>Foxl2</i> <sup>em(IRES-CreERT2)Smoc</sup>
<b>Cat. NO.</b>	NM-KI-220290
<b>Strain State</b>	Repository Live

## Gene Summary

<b>Gene Symbol</b> Foxl2	<b>Synonyms</b>	BPES; Pfrk; PINTO; AU045128
	<b>NCBI ID</b>	<a href="#">26927</a>
	<b>MGI ID</b>	<a href="#">1349428</a>
	<b>Ensembl ID</b>	<a href="#">ENSMUSG00000050397</a>
	<b>Human Ortholog</b>	FOXL2

## Model Description

IRES-CreERT2 expression cassette was knocked into the Foxl2 gene stop codon site.  
\*Literature published using this strain should indicate: Foxl2-IRES-CreERT2 mice (Cat. NO. NM-KI-220290) were purchased from Shanghai Model Organisms Center, Inc..

## Validation Data

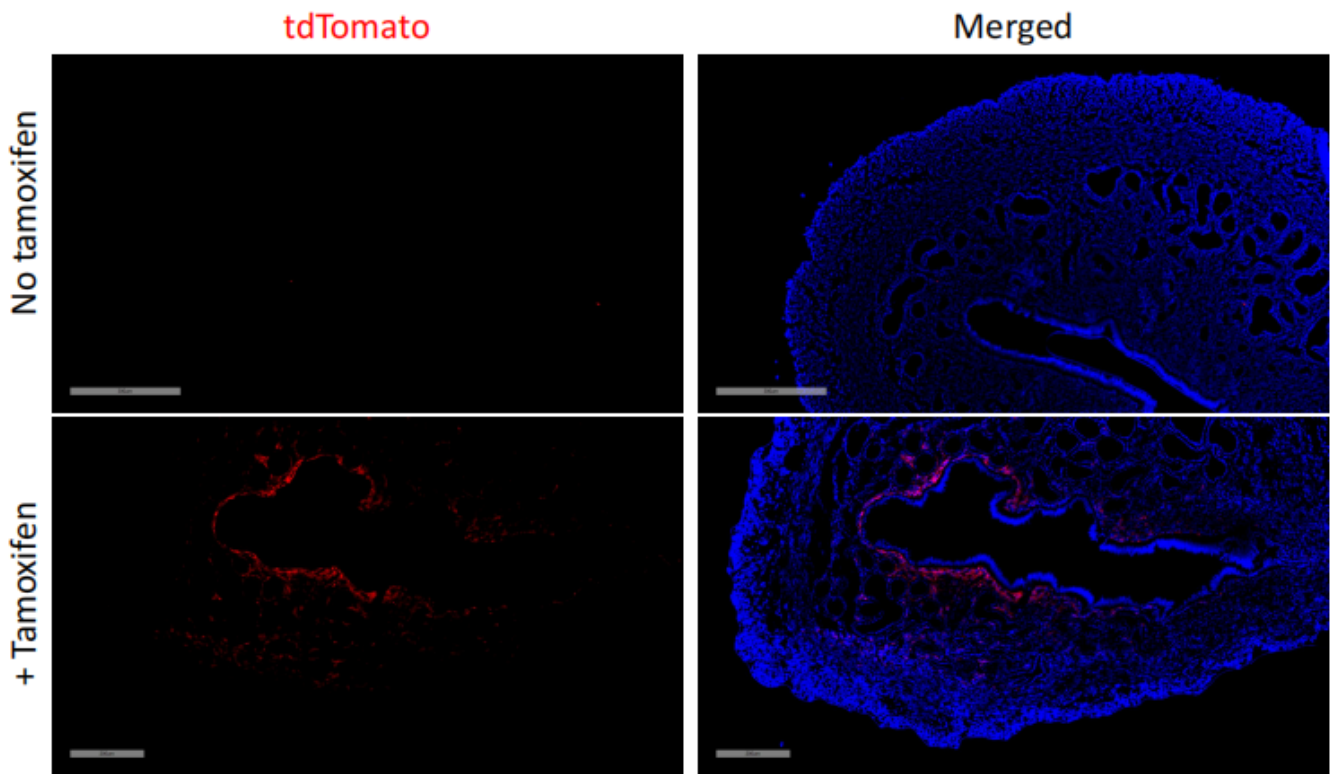


Fig1. CreERT2 mediated recombination in the uterus of  $Foxl2^{CreERT2/+}; Rosa26^{tdTomato/+}$  mouse.

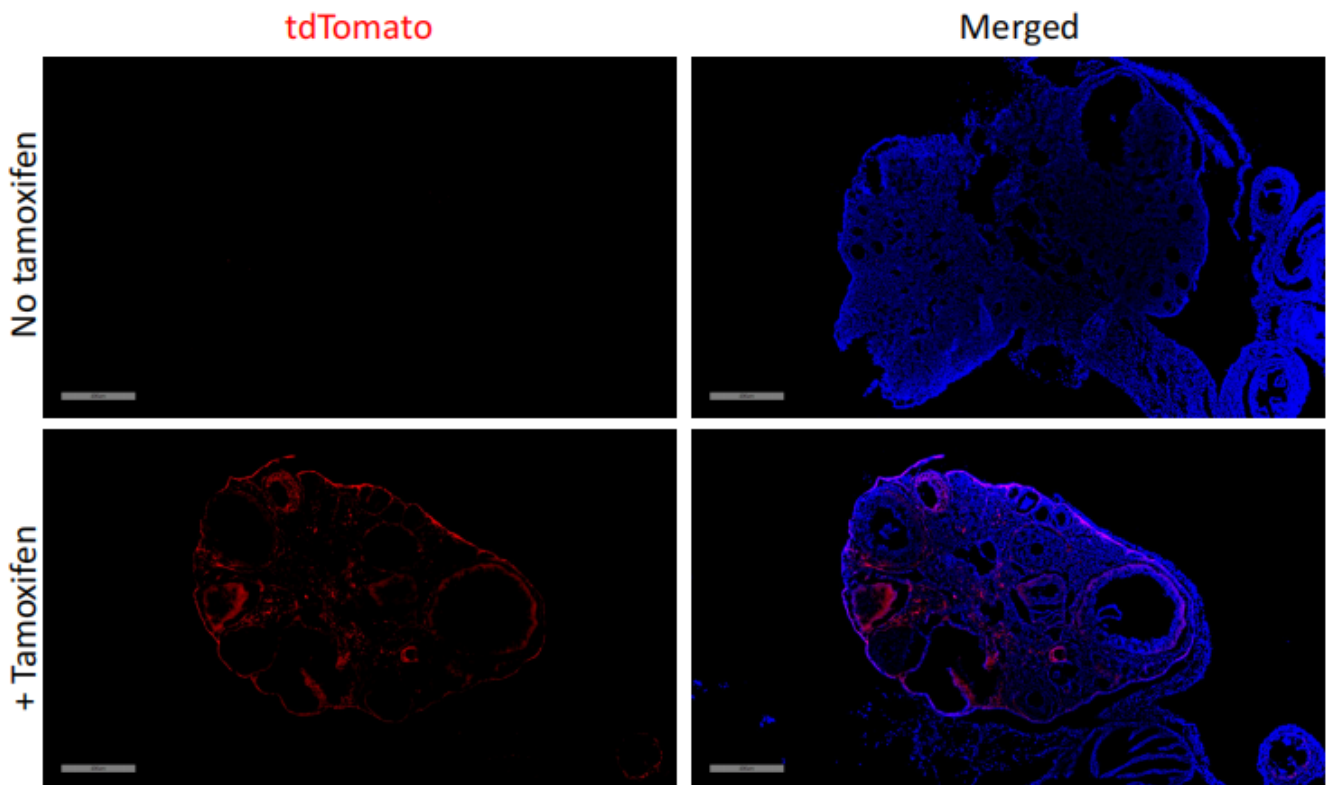


Fig2. CreERT2 mediated recombination in the ovary of  $Foxl2^{CreERT2/+}; Rosa26^{tdTomato/+}$  mouse.

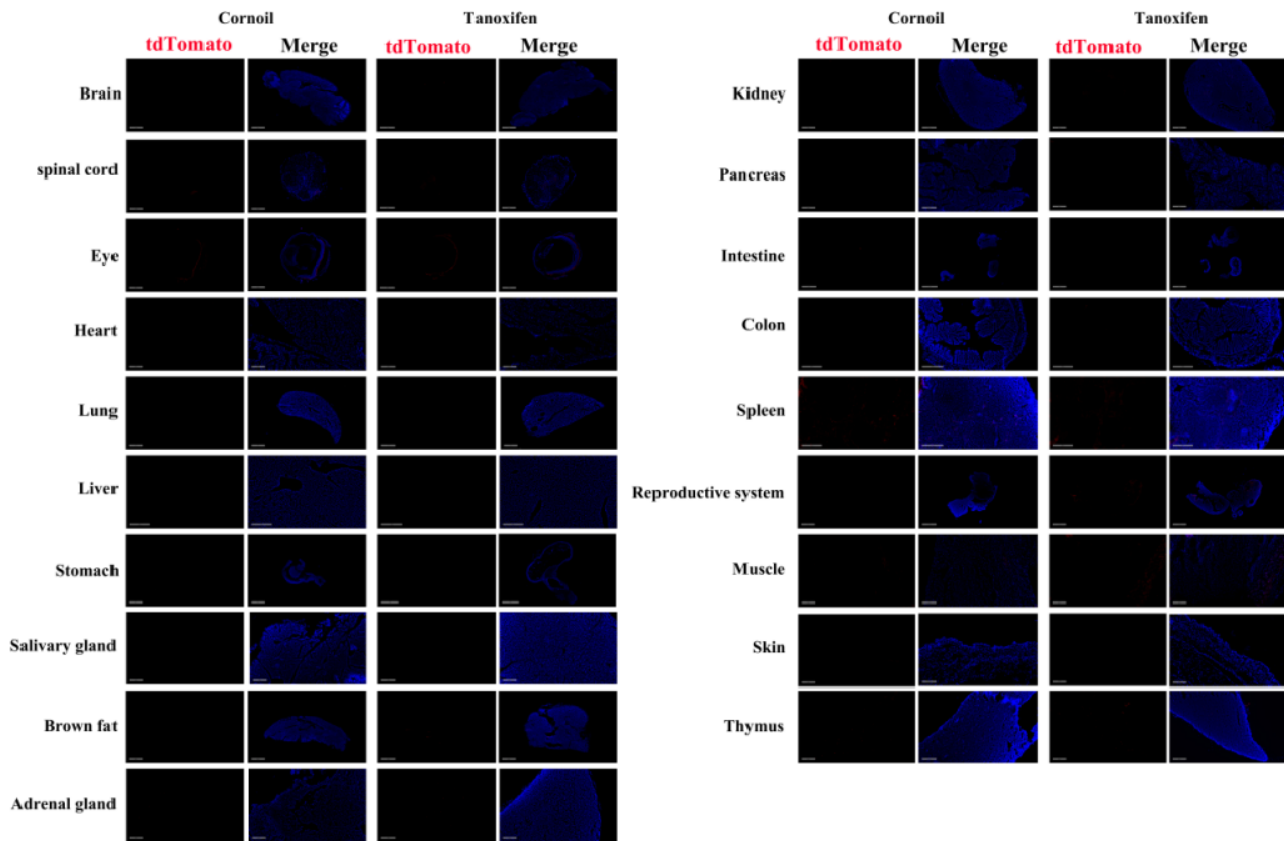


Fig3. Detection of tdTomato (red) in various tissues of *Foxl2CreERT2/+; Rosa26tdTomato/+* mice. (For more detailed information please contact our technical advisor.)