

Krt15-IRES-Cre

Nomenclature	C57BL/6Smoc- <i>Krt15</i> ^{em(IRES-Cre-WPRE-pA)1Smoc}
Cat. NO.	NM-KI-225057
Strain State	Sperm cryopreservation

Gene Summary

Gene Symbol Krt15	Synonyms	K15; Krt1-15; AI528832
	NCBI ID	16665
	MGI ID	96689
	Ensembl ID	ENSMUSG00000054146
	Human Ortholog	KRT15

Model Description

IRES-Cre-WPRE-pA expression cassette was knocked into the *Krt15* gene .

*Literature published using this strain should indicate: *Krt15*-IRES-Cre mice (Cat. NO. NM-KI-225057) were purchased from Shanghai Model Organisms Center, Inc..

Validation Data

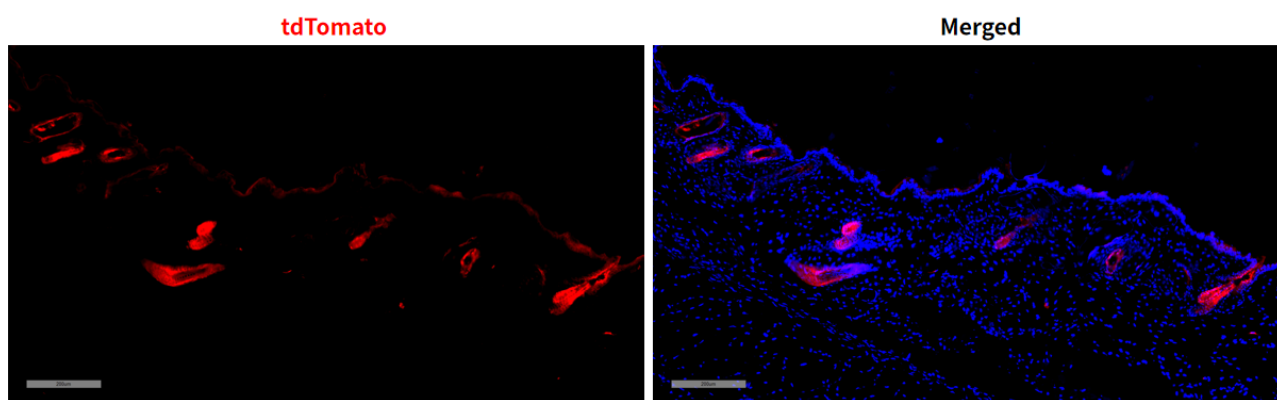


Fig 1. Cre-mediated recombination in skin of *Krt15*^{Cre/+}; *Rosa26*^{tdTomato/+} mice.

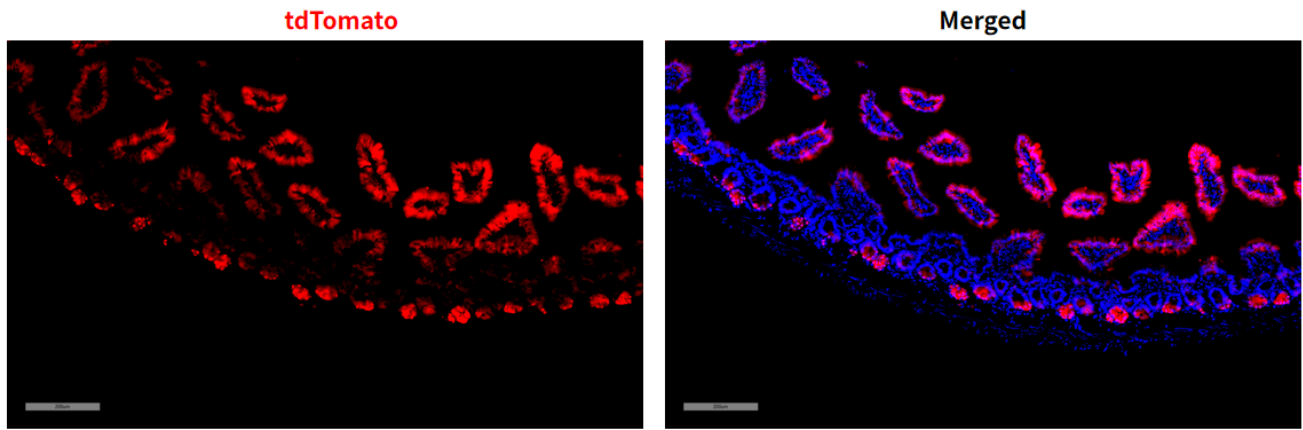


Fig 2. Cre-mediated recombination in small intestine of $Krt15^{Cre/+}$; $Rosa26^{tdTomato/+}$ mice.

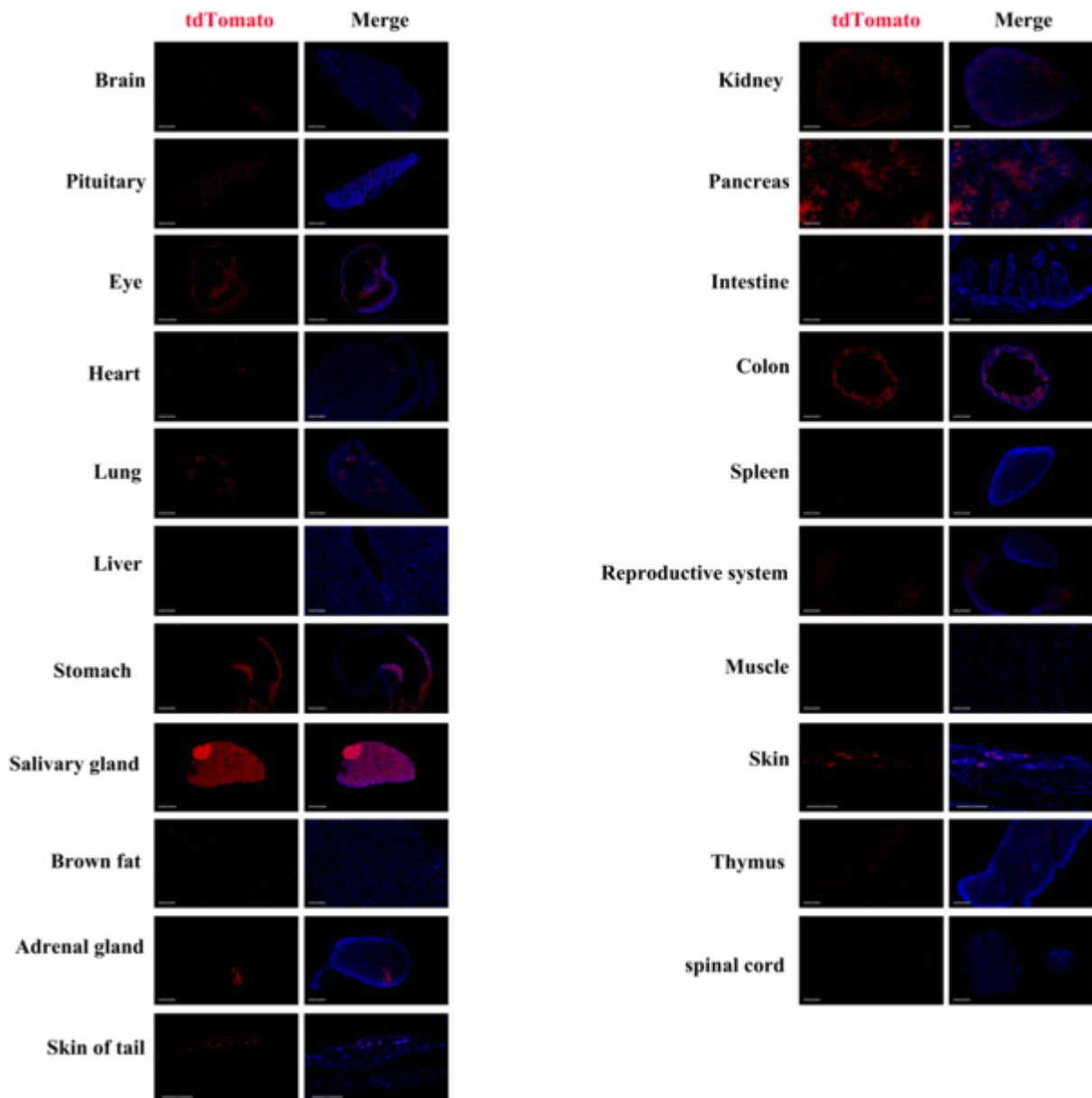


Fig 3. Detection of tdTomato (red) in various tissues of $Krt15^{Cre/+}$; $Rosa26^{tdTomato/+}$ mice. Expression tissues include: skin, brain, pituitary gland, retina, cornea, lung, stomach, salivary gland, brown

fat, adrenal gland, kidney, pancreas, small intestine, large intestine, testis, epididymis, thymus. A few cells expressed in heart, liver, spleen, muscle, spinal cord. (11-week old, male) (For more detailed information please contact our technical advisor.)
