

Prg4-CreERT2-2A-EGFP

Nomenclature	C57BL/6Smoc- <i>Prg4</i> ^{em(Kozak-CreERT2-2A-EGFP-WPRE-pA)1Smoc}
Cat. NO.	NM-KI-225074
Strain State	Repository Live

Gene Summary

Gene Symbol Prg4	Synonyms	MSF; SZP; CACP; JCAP; DOL54; lubricin
	NCBI ID	96875
	MGI ID	1891344
	Ensembl ID	ENSMUSG00000006014
	Human Ortholog	PRG4

Model Description

Kozak-CreERT2-2A-EGFP-WPRE-pA expression cassette was knocked into the Prg4 gene .

*Literature published using this strain should indicate: Prg4-CreERT2-2A-EGFP mice (Cat. NO. NM-KI-225074) were purchased from Shanghai Model Organisms Center, Inc..

Validation Data

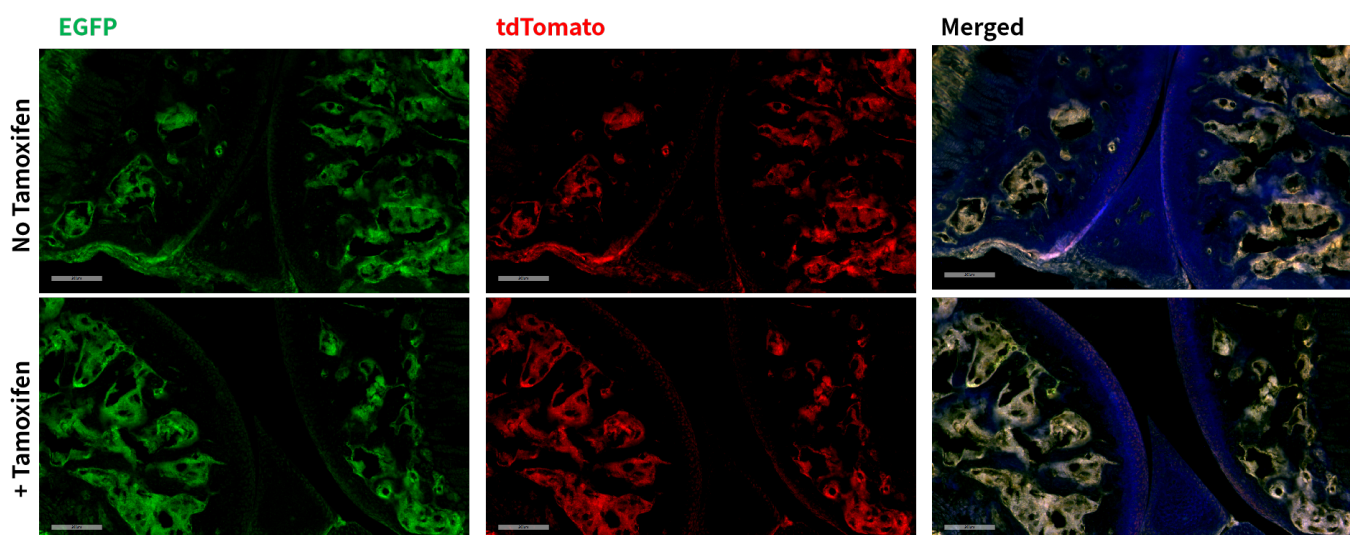


Fig 1. Cre-mediated recombination in bone of *Prg4*^{CreERT2-EGFP/+}; *Rosa26*^{tdTomato/+} mice.

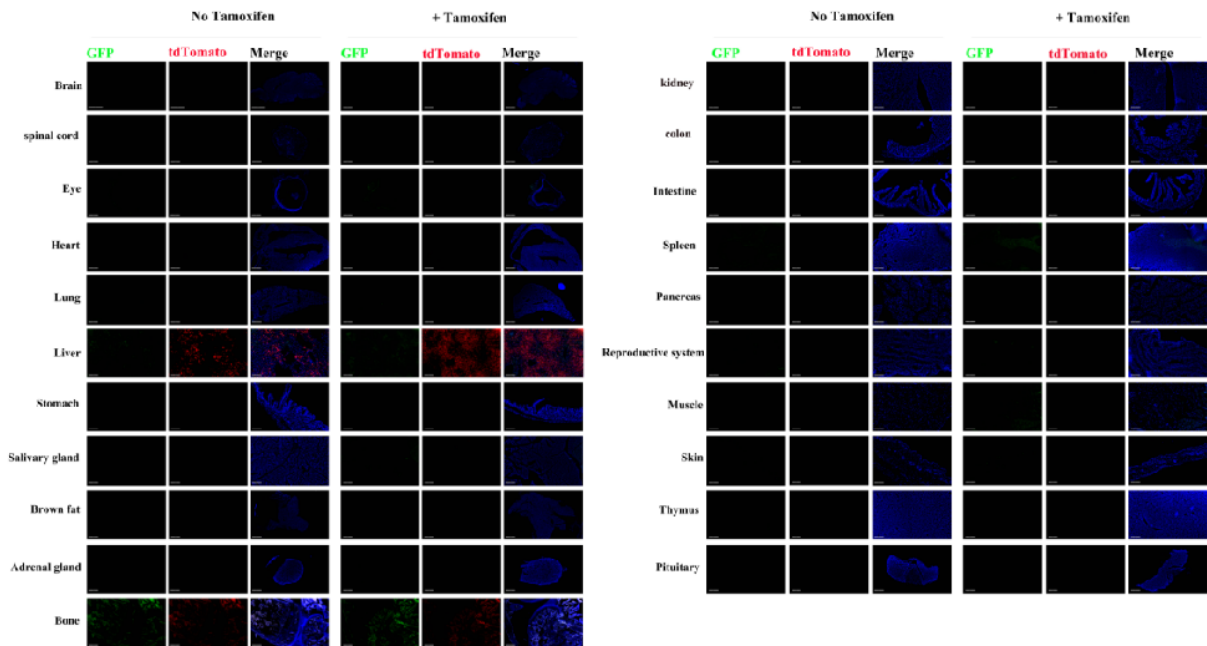


Fig 2. Detection of tdTomato (red) and GFP (green) in various tissues of $Prg4^{CreERT2-EGFP/+}; Rosa26^{tdTomato/+}$ mice. Expression tissues include: liver, bone, spleen, muscle, hair follicle. A few cells expressed in heart, salivary gland, adrenal gland, small intestine, testis. Tissues that unexpressed include brain, spinal cord, retina, lung, stomach, brown fat, kidney, colon, pancreas, thymus, pituitary. (37-day old, male)

TdTomato labeling was observed in tissue sections of $Prg4^{CreERT2-EGFP/+}; Rosa26^{tdTomato/+}$ untreated treated groups, indicating spontaneous Cre activity in the absence of tamoxifen.

(For more detailed information please contact our technical advisor.)