

# hCCR8(BALB/c)(2)

<b>Nomenclature</b>	BALB/cAnSmoc- <i>Ccr8</i> <sup>em(hCCR8)Smoc</sup>
<b>Cat. NO.</b>	NM-HU-220501
<b>Strain State</b>	Embryo cryopreservation

## Gene Summary

<b>Gene Symbol</b> CCR8	<b>Synonyms</b>	Cmkbr8
	<b>NCBI ID</b>	<a href="#">12776</a>
	<b>MGI ID</b>	<a href="#">1201402</a>
	<b>Ensembl ID</b>	<a href="#">ENSMUSG00000042262</a>
	<b>Human Ortholog</b>	CCR8

## Model Description

The endogenous mouse *Ccr8* gene was replaced by human CCR8 gene.

\*Literature published using this strain should indicate: hCCR8(BALB/c)(2) mice (Cat. NO. NM-HU-220501) were purchased from Shanghai Model Organisms Center, Inc..

## Validation Data

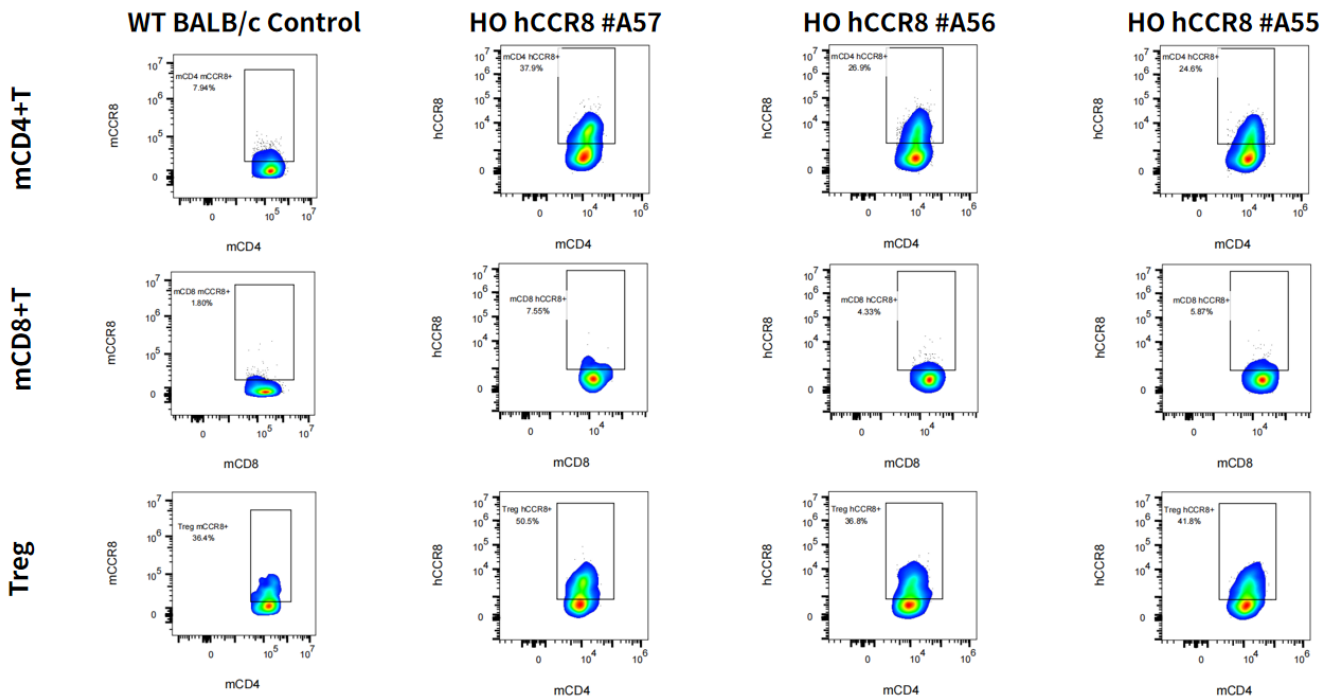


Fig1. Detection of hCCR8 expression on spleen-derived activated T cells and Tregs in hCCR8 KI mice.

\*Splenocytes were activated by anti-mCD3/CD28 antibody *in vivo*.

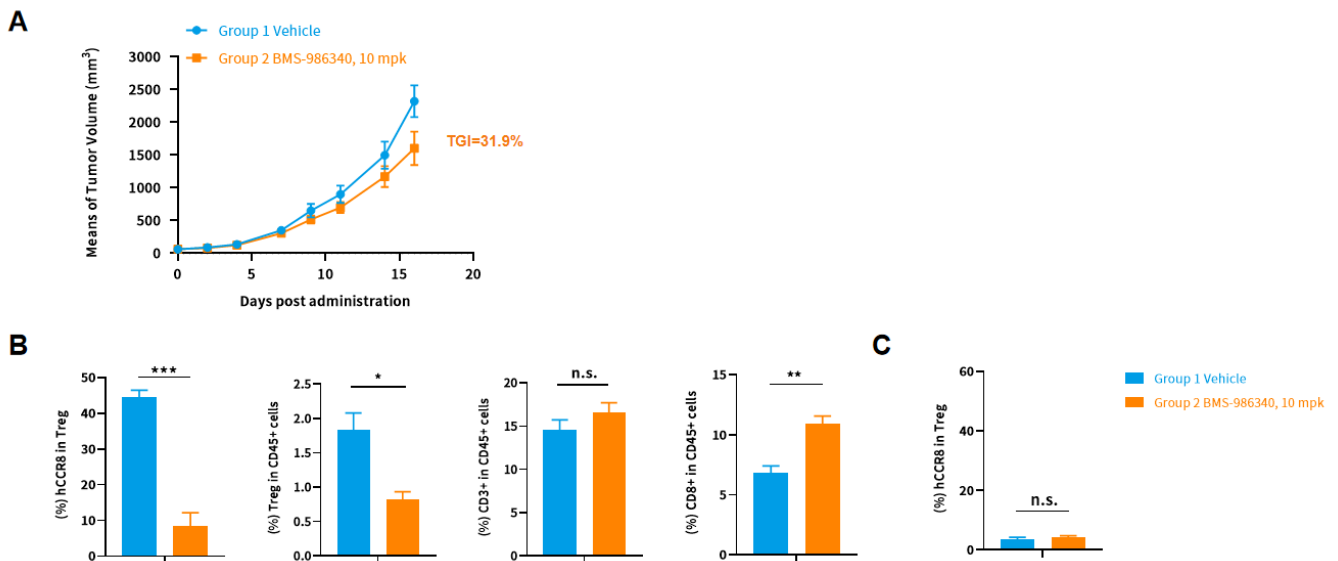


Fig2. *In vivo* antitumor responses of anti-hCCR8 alone in BALB/c hCCR8(v2) knockin mice engrafted with CT26 tumor.

(A) Mean tumor growth curves upon treatment; (B) *In vivo* antitumor response of anti-hCCR8 in hCCR8 (v2) mice bearing CT26 tumor; (C) Expression of hCCR8 in spleen in hCCR8 (v2) mice bearing CT26 tumor.

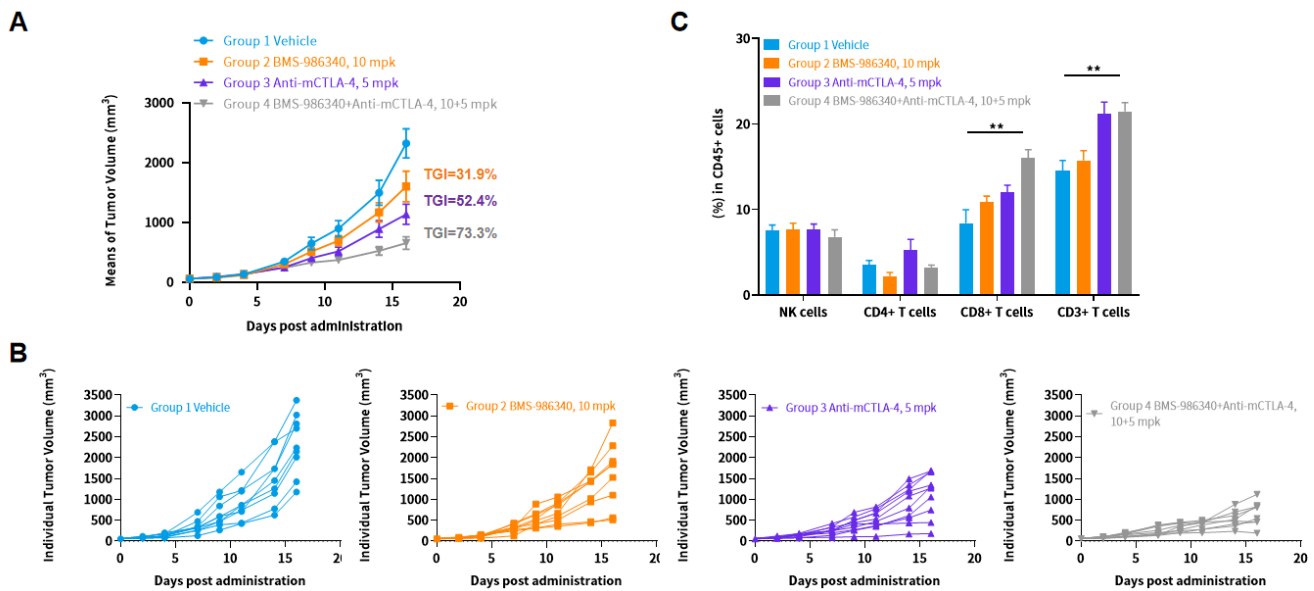


Fig3. *In vivo* antitumor responses of anti-hCCR8 alone or in combination with anti-CTLA-4 in BALB/c hCCR8(v2) knockin mice engrafted with CT26 tumor.

(A) Mean tumor growth curves upon treatment; (B) Individual tumor growth curves upon treatment; (C) *In vivo* antitumor response of anti-hCCR8 in hCCR8 (v2) mice bearing CT26 tumor.