

# hCLEC5A

<b>Nomenclature</b>	C57BL/6Smoc- <i>Clec5a</i> <sup>tm(hCLEC5A)Smoc</sup>
<b>Cat. NO.</b>	NM-HU-220503
<b>Strain State</b>	Repository Live

## Gene Summary

<b>Gene Symbol</b> Clec5a	<b>Synonyms</b>	Mdl1; Ly100; MDL-1; Clecsf5
	<b>NCBI ID</b>	<a href="#">23845</a>
	<b>MGI ID</b>	<a href="#">1345151</a>
	<b>Ensembl ID</b>	<a href="#">ENSMUSG00000029915</a>
	<b>Human Ortholog</b>	CLEC5A

## Model Description

The endogenous mouse *Clec5a* gene was replaced by human *CLEC5A* gene.

\*Literature published using this strain should indicate: hCLEC5A mice (Cat. NO. NM-HU-220503) were purchased from Shanghai Model Organisms Center, Inc..

## Validation Data

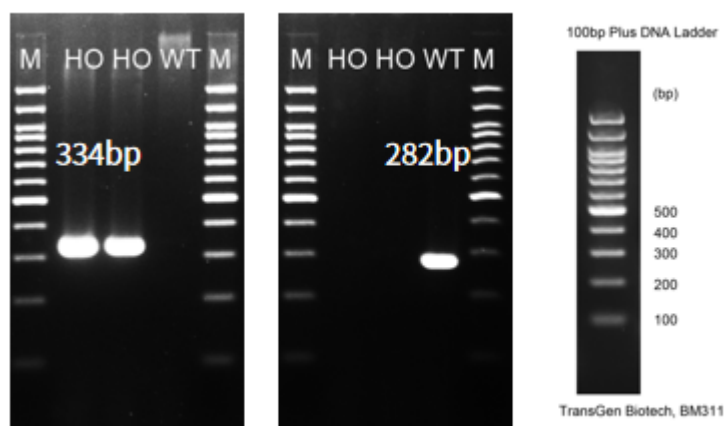


Fig.1 Detection of *CLEC5A* expression in frontal lobe by RT-PCR.

Wild type: only one band at 282 bp with primers F1/R1(mClec5a);

Homozygous: only one band at 334 bp with primers F2/R2(hCLEC5A).

Abbr. M, DNA marker; HO, homozygous; WT, wild type.

---