

Flt3-2A-CreERT2

Nomenclature	C57BL/6Smoc- <i>Flt3</i> ^{em1(2A-CreERT2)Smoc}
Cat. NO.	NM-KI-231796
Strain State	Repository Live

Gene Summary

Gene Symbol Flt3	Synonyms	Flk2; Ly72; wmfl; CD135; Flk-2; Flt-3; B230315G04
	NCBI ID	14255
	MGI ID	95559
	Ensembl ID	ENSMUSG00000042817
	Human Ortholog	FLT3

Model Description

The 2A-CreERT2 expression cassette was knocked into the Flt3 gene stop codon site.

*Literature published using this strain should indicate: Flt3-2A-CreERT2 mice (Cat. NO. NM-KI-231796) were purchased from Shanghai Model Organisms Center, Inc..

Validation Data

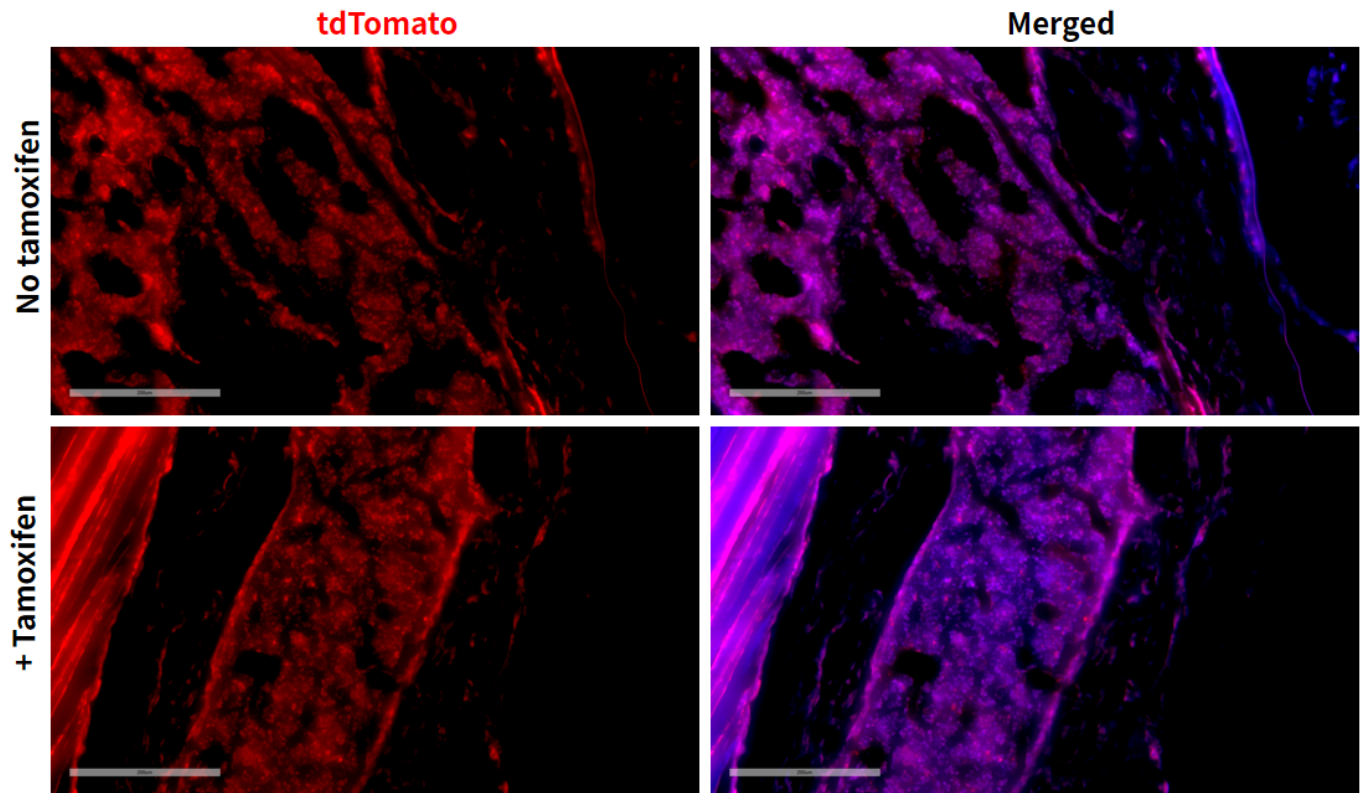


Fig1. Cre mediated recombination in bone marrow of $Flt3^{CreERT2/+}; Rosa26^{tdTomato/+}$ mouse.

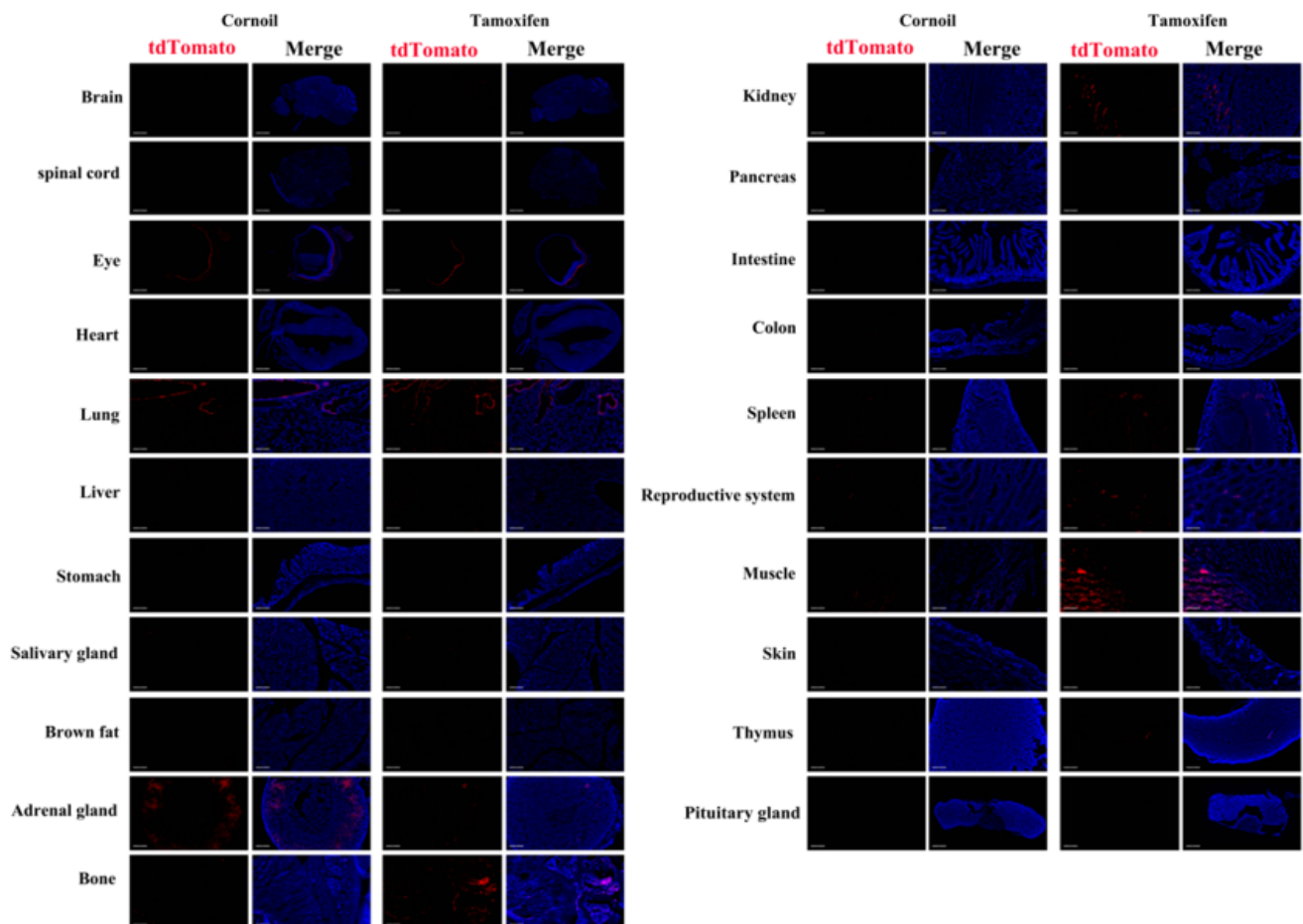


Fig2. Detection of tdTomato(red) in various tissues of $Flt3^{CreERT2/+};Rosa26^{tdTomato/+}$ mouse. Expression tissues include: lung, bone marrow, kidney, spleen and muscle. A few cells expressed in brain, liver, stomach, salivary gland, brown fat, adrenal gland, colon, testis, skin, thymus. Tissues that unexpressed include spinal cord, retina, heart, pancreas, small intestine and pituitary gland. (49-days old, male) (For more detailed information please contact our technical advisor.)
