

# Pitx2-2A-Cre

|                     |  |
|---------------------|--|
| <b>Nomenclature</b> | C57BL/6Smoc- <i>Pitx2</i> <sup>tm1(2A-Cre)Smoc</sup> |
| <b>Cat. NO.</b>     | NM-KI-231836   |
| <b>Strain State</b> | Sperm cryopreservation                               |

## Gene Summary

|                             |                       |   |
|-----------------------------|-----------------------|---|
| <b>Gene Symbol</b><br>Pitx2 | <b>Synonyms</b>       | Brx1; Ptx2; Rieg; Brx1b; Otlx2; Munc30; 9430085M16Rik |
|                             | <b>NCBI ID</b>        | <a href="#">18741</a>                                 |
|                             | <b>MGI ID</b>         | <a href="#">109340</a>                                |
|                             | <b>Ensembl ID</b>     | <a href="#">ENSMUSG00000028023</a>                    |
|                             | <b>Human Ortholog</b> | PITX2   |

## Model Description

The 2A-Cre expression cassette was knocked into the Pitx2 gene start codon site.

\*Literature published using this strain should indicate: Pitx2-2A-Cre mice (Cat. NO. NM-KI-231836) were purchased from Shanghai Model Organisms Center, Inc..

## Validation Data

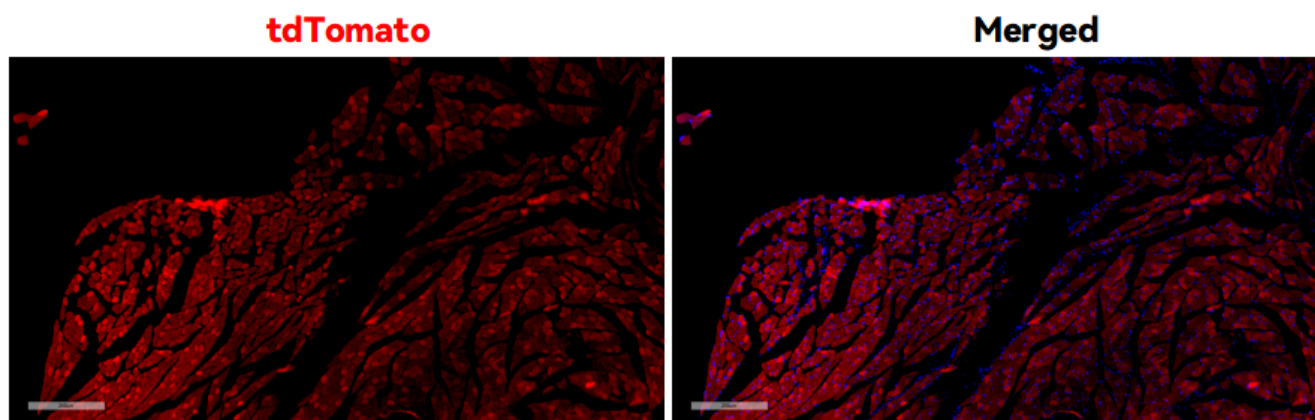


Fig1. Cre-mediated recombination in skeletal muscle of Pitx2<sup>Cre/+</sup>; Rosa26<sup>tdTomato/+</sup> mouse.

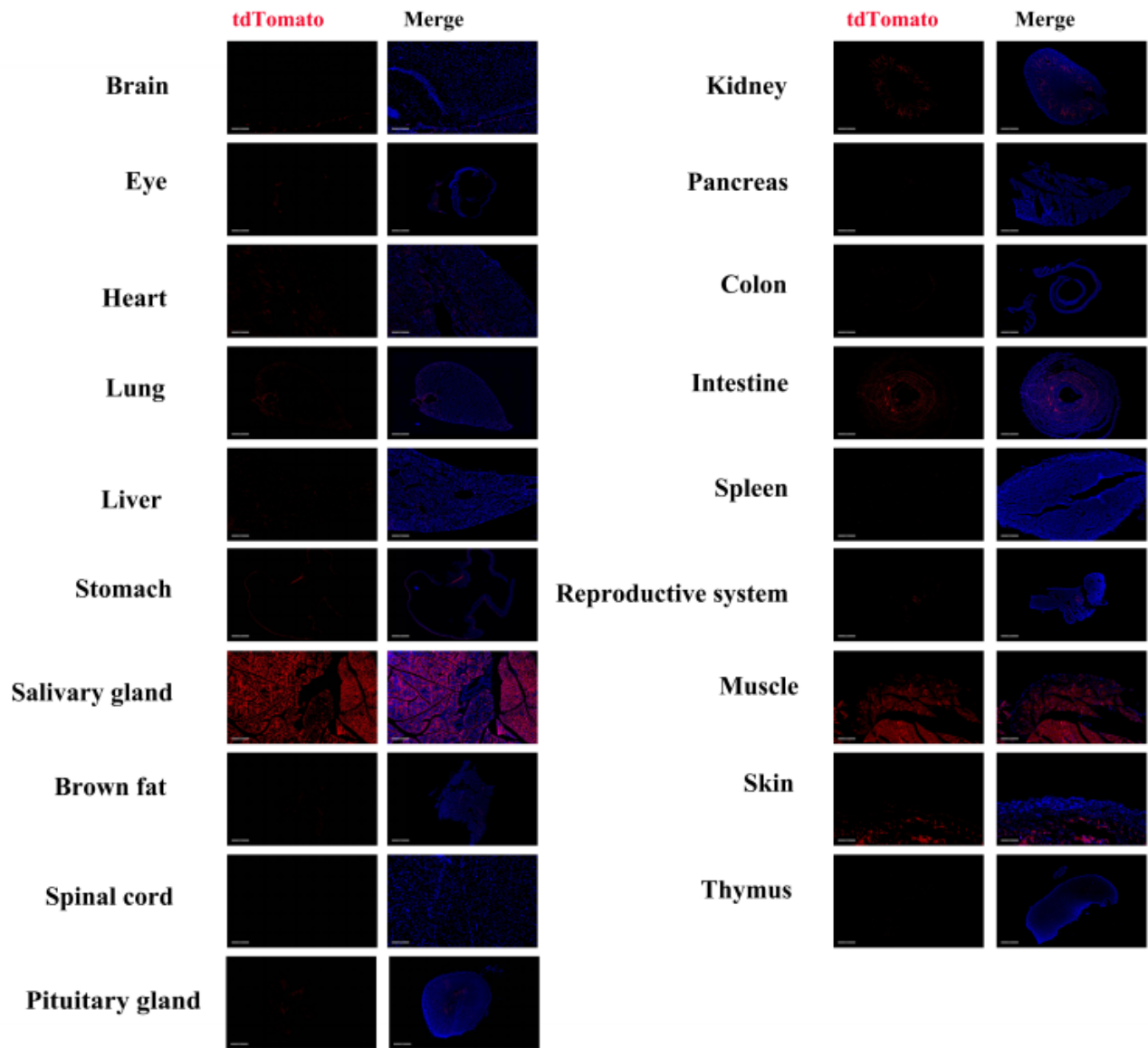


Fig2. Detection of tdTomato (red) in various tissues of *Pitx2<sup>Cre/+</sup>;Rosa26<sup>tdTomato/+</sup>* mice. (For more detailed information please contact our technical advisor.)