

Dbh-IRES-Cre

Nomenclature	C57BL/6Smoc- <i>Dbh</i> ^{em1(IRES-Cre)Smoc}
Cat. NO.	NM-KI-232144
Strain State	Sperm cryopreservation

Gene Summary

Gene Symbol Dbh	Synonyms	-
	NCBI ID	13166
	MGI ID	94864
	Ensembl ID	ENSMUSG00000000889
	Human Ortholog	DBH

Model Description

The IRES-Cre expression cassette was knocked into the *Dbh* gene stop codon site.

*Literature published using this strain should indicate: *Dbh*-IRES-Cre mice (Cat. NO. NM-KI-232144) were purchased from Shanghai Model Organisms Center, Inc..

Validation Data

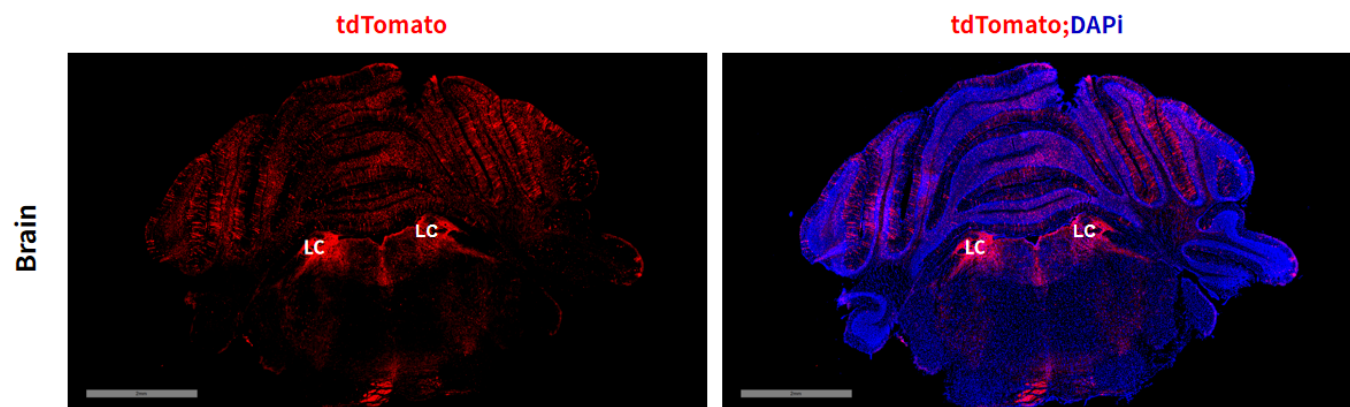
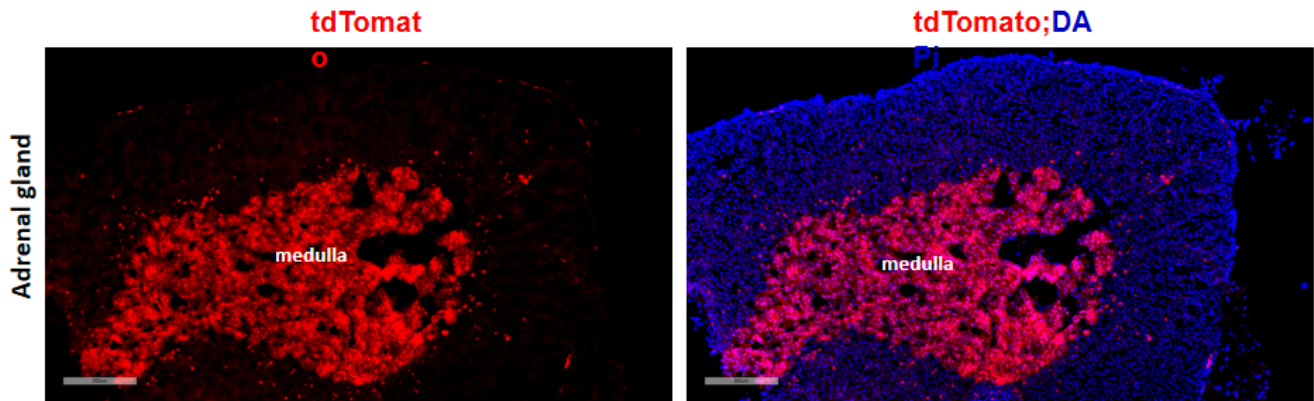


Fig1. Cre mediated recombination in brain of *Dbh*^{Cre/+};*Rosa26*^{tdTomato/+} mouse.

Abbr: LC:Locus Coeruleus



Cre mediated recombination in Adrenal glands of *Dbh^{Cre/+};R26^{tdTomato/+}* mice

Fig2. Cre mediated recombination in adrenal glands of *Dbh^{Cre/+};Rosa26^{tdTomato/+}* mouse.

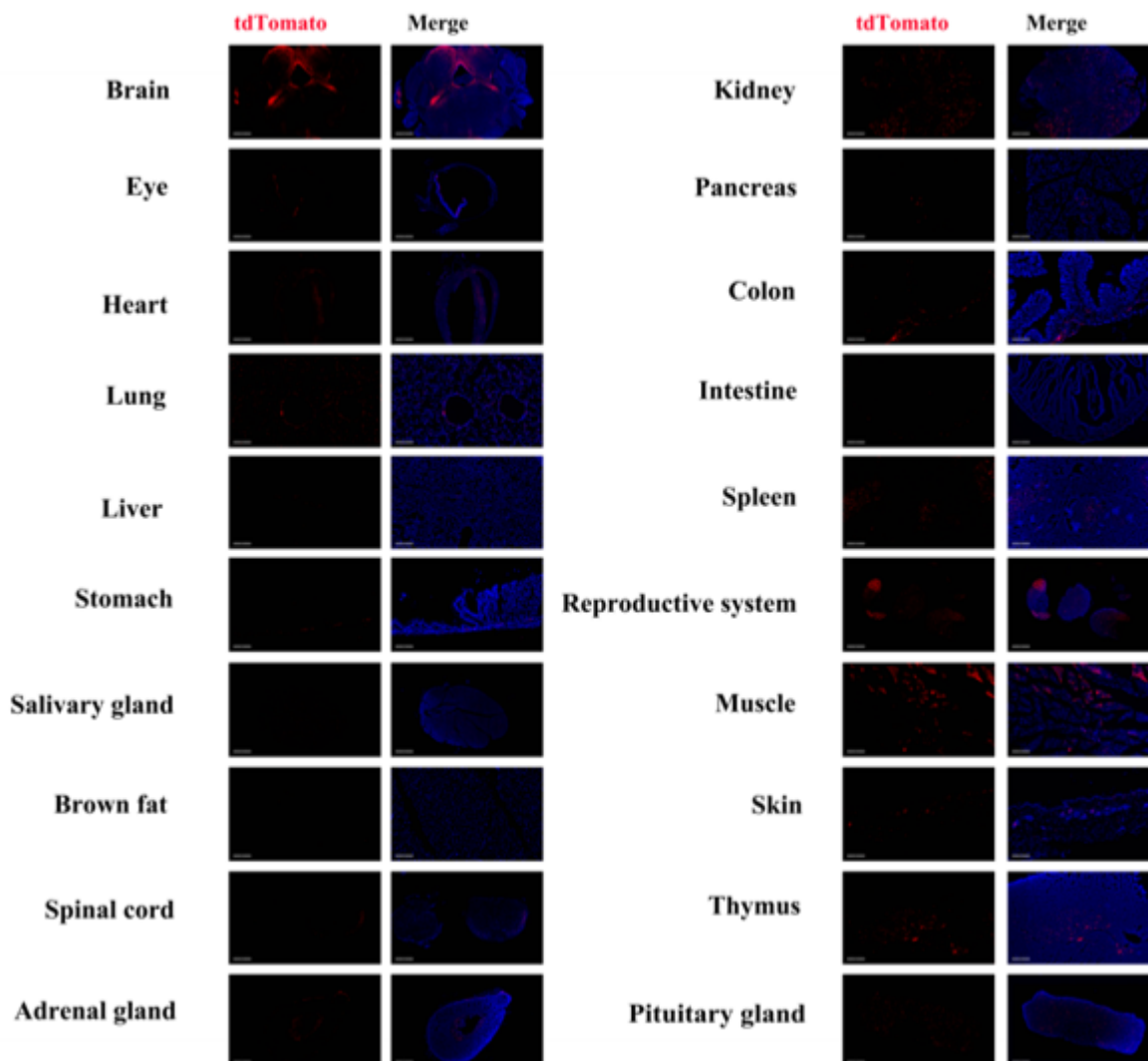


Fig3. Detection of tdTomato(red) in various tissues of *Dbh^{Cre/+};Rosa26^{tdTomato/+}* mouse. Expression tissues include: brain, adrenal glands, retina, heart, lungs, salivary glands, spinal cord, kidneys, colon, small intestine, spleen, testicles and epididymis, muscles, skin, thymus, pituitary gland. A

few cells expressed in liver, stomach, brown fat, pancreas.(5.5-months old, male) (For more detailed information please contact our technical advisor.)
