

# MC38-hCD24/hCD47

## Strain Information

Cat. NO.	NMC-230051
Cell Line	MC38-hCD24/hCD47
Strain State	Validation of tumorigenic capacity completed
Model	CD24/CD47 gene humanized MC38 cell line
Description	*Literature published using this strain should indicate: MC38-hCD24/hCD47 cell line (Cat. NO. NMC-230051) was purchased from Shanghai Model Organisms Center, Inc..

## Validation Data

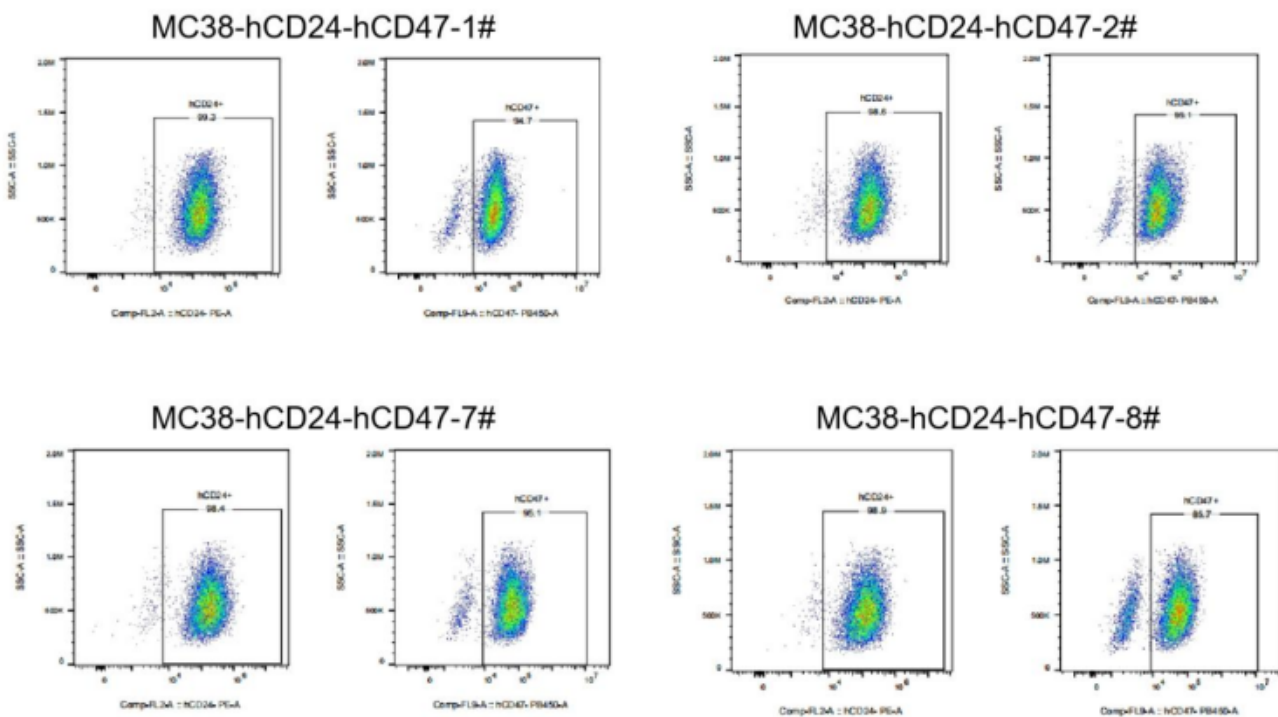


Figure 1. hCD24-hCD47 Expression in wild-type MC38 cells and MC38-hCD24-hCD47 was detected by FACS.

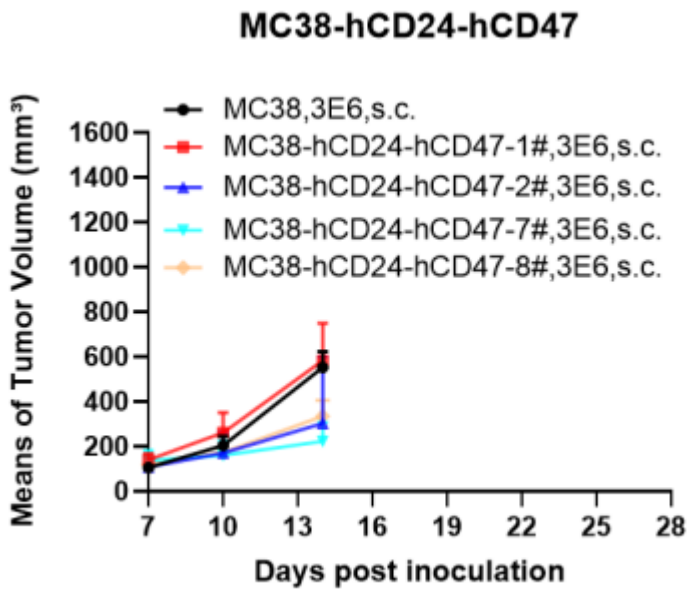


Figure 2. *In vivo* hCD24-hCD47 activity curve of MC38-hCD24-hCD47 xenograft mouse model (n=5).