

B16F10-hPDL1/Sirpa

Strain Information

Cat. NO.	NMC-230056
Cell Line	B16F10-hPDL1/Sirpa
Strain State	Validation of target gene expression completed
Model	PD-L1 gene humanized B16F10 cell line with Sirpa gene overexpression
Description	*Literature published using this strain should indicate: B16F10-hPDL1/Sirpa cell line (Cat. NO. NMC-230056) was purchased from Shanghai Model Organisms Center, Inc..

Validation Data

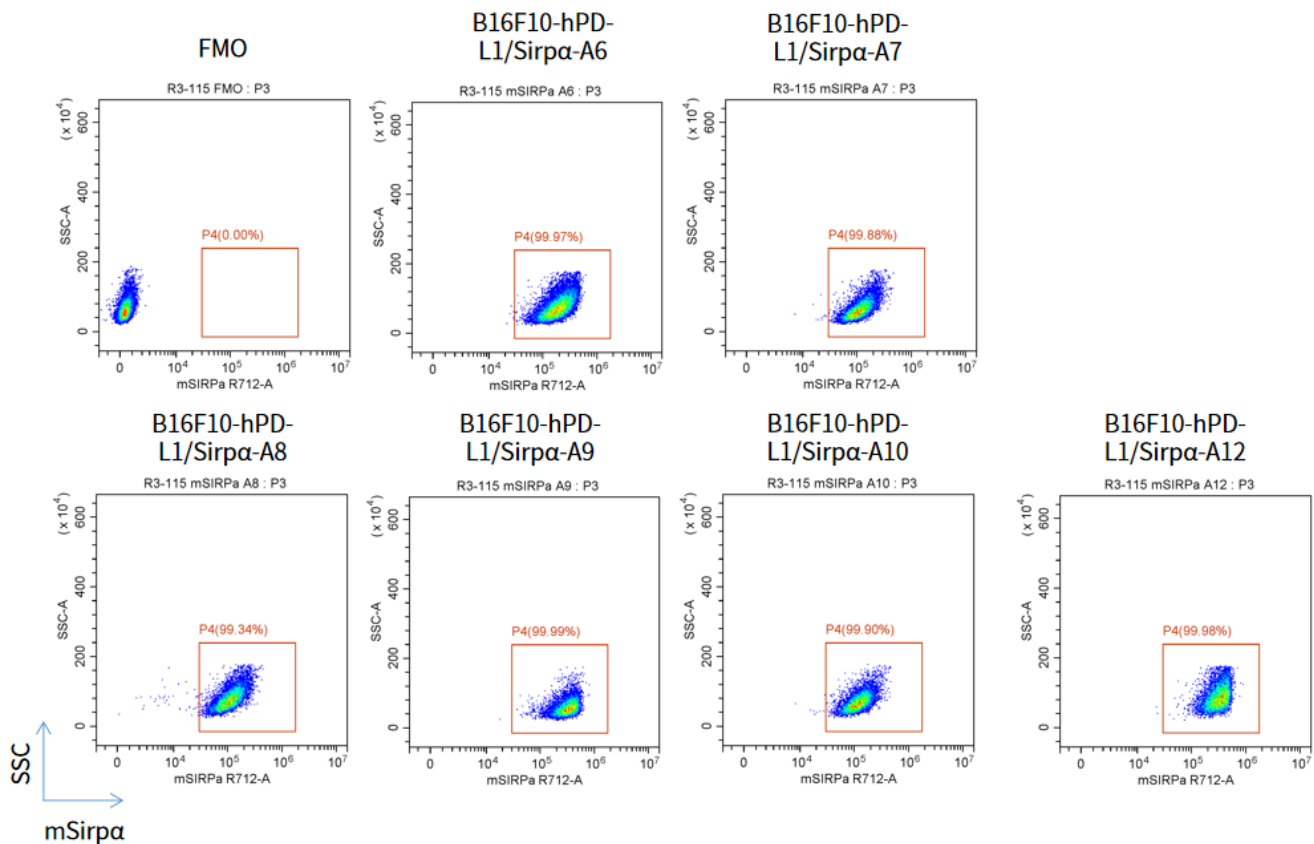


Fig1. Mouse Sirpa expression in vitro cultured cells of B16F10-hPD-L1/Sirpa

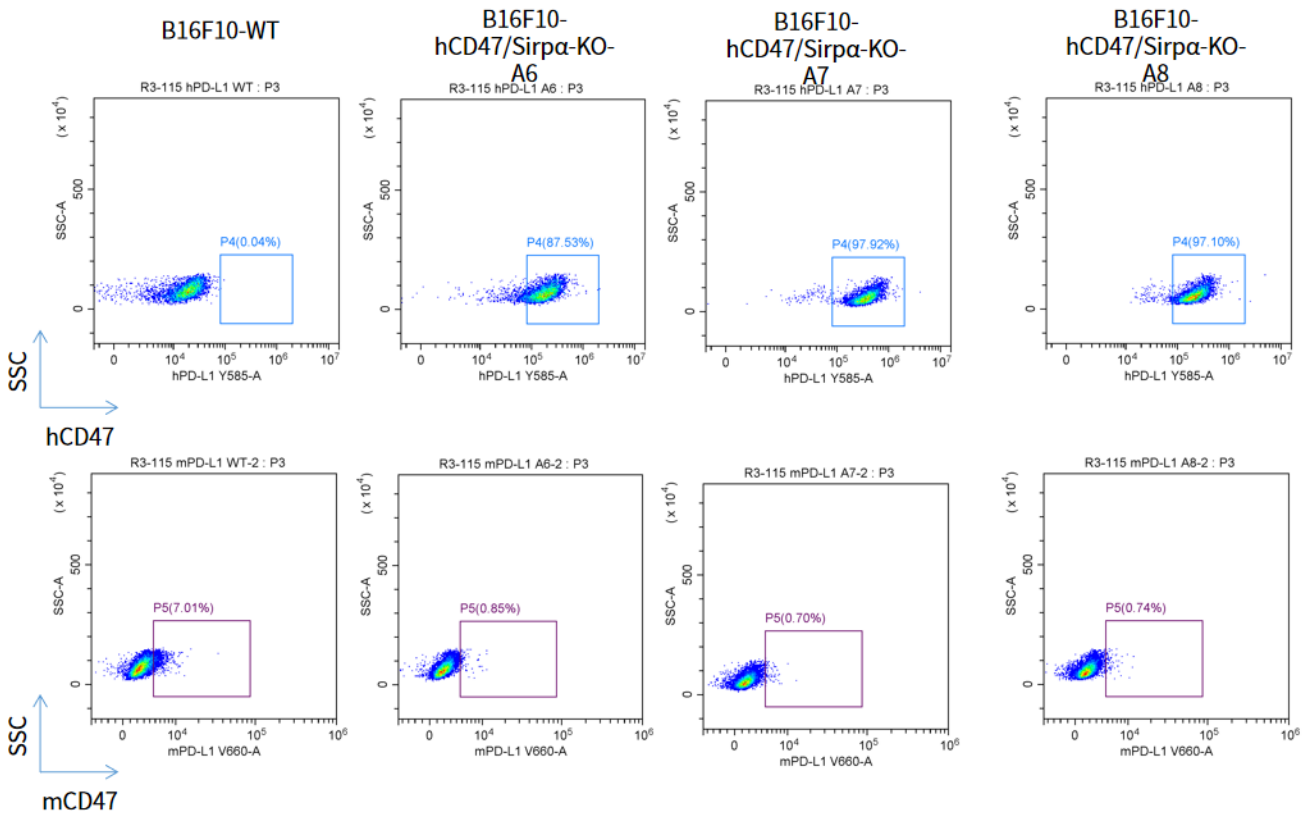


Fig2.human/mouse CD47 expression in vitro cultured cells of B16F10-hPD-L1/Sirpα