

# hHLA-A2\*01

<b>Nomenclature</b>	C57BL/6Smoc- <i>H2-D1</i> <sup>em1hHLA-A2*01Smoc</sup>
<b>Cat. NO.</b>	NM-KI-233927
<b>Strain State</b>	Sperm cryopreservation

## Gene Summary

<b>Gene Symbol</b> H2-D1	<b>Synonyms</b>	H-2D; H2-D; H2-K1
	<b>NCBI ID</b>	<a href="#">14964</a>
	<b>MGI ID</b>	<a href="#">95896</a>
	<b>Ensembl ID</b>	<a href="#">ENSMUSG00000073411</a>
	<b>Human Ortholog</b>	HLA-A, HLA-B, HLA-C
<b>Gene Symbol</b> H2-D1	<b>Synonyms</b>	H-2D H2-D H2-K1
	<b>NCBI ID</b>	<a href="#">14964</a>
	<b>MGI ID</b>	<a href="#">95896</a>
	<b>Ensembl ID</b>	<a href="#">ENSMUSG00000073411</a>
	<b>Human Ortholog</b>	H2-D1

## Model Description

The endogenous mouse H2-D1 gene was replaced by human HLA-A2\*01 gene .

\*Literature published using this strain should indicate: hHLA-A2\*01 mice (Cat. NO. NM-KI-233927) were purchased from Shanghai Model Organisms Center, Inc..

## Validation Data

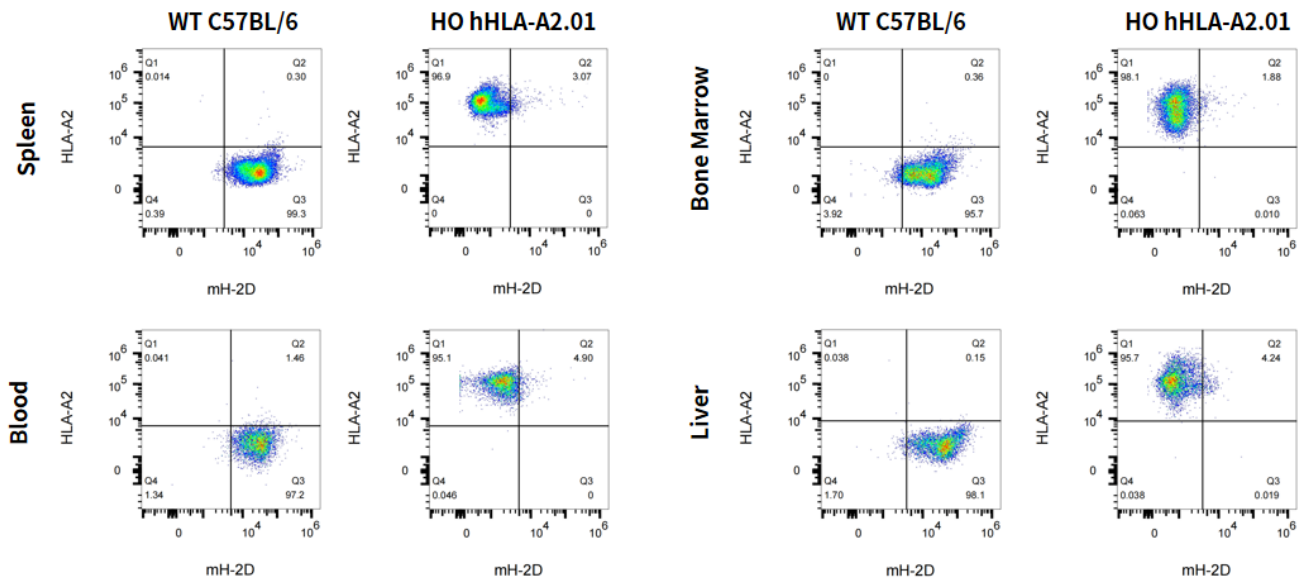


Fig.1 Detection of mH-2D and HLA-A2 expression on overall Leukocytes in hHLA-A2.01 dKI mice (female, 6-8wks).

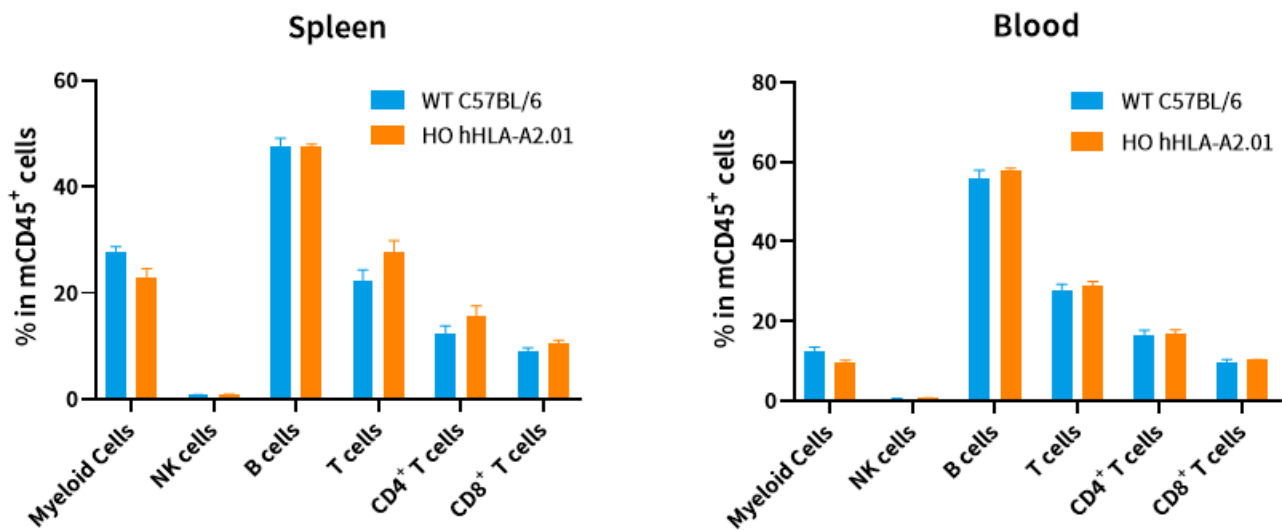


Fig.2 Analysis of leukocytes cell subpopulation in HO hHLA-A2.01 and WT C57BL/6 mice (female, 6-8wks, n=3).

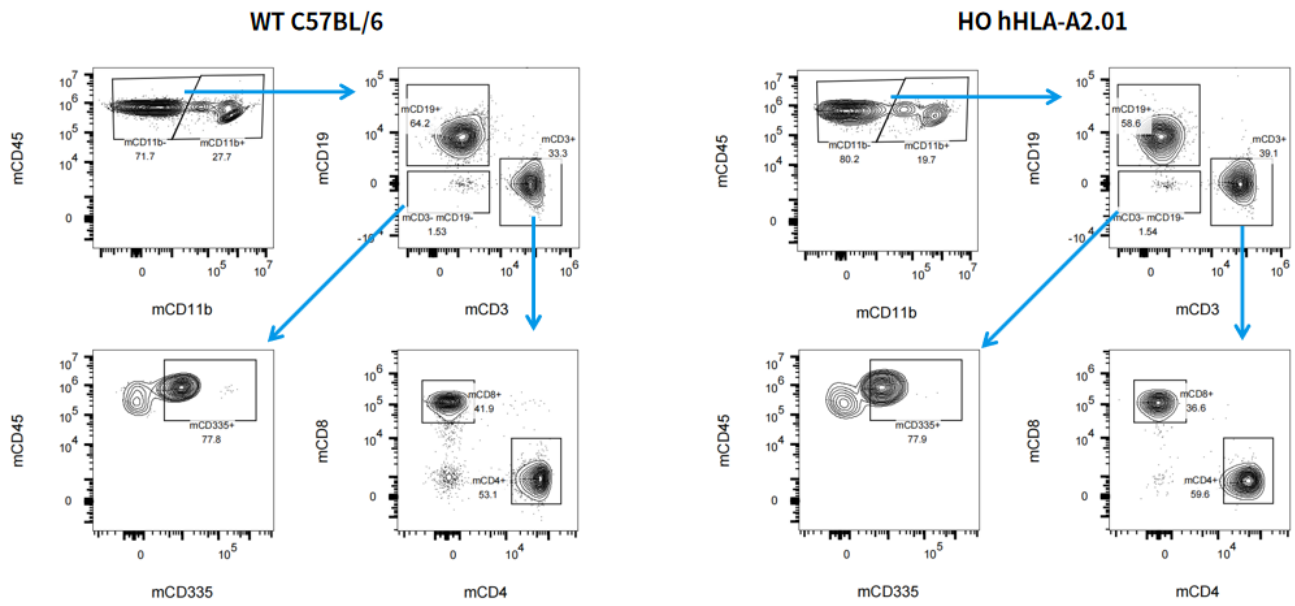


Fig.3 Analysis of leukocytes cell subpopulation in Spleen (female, 6-8wks).

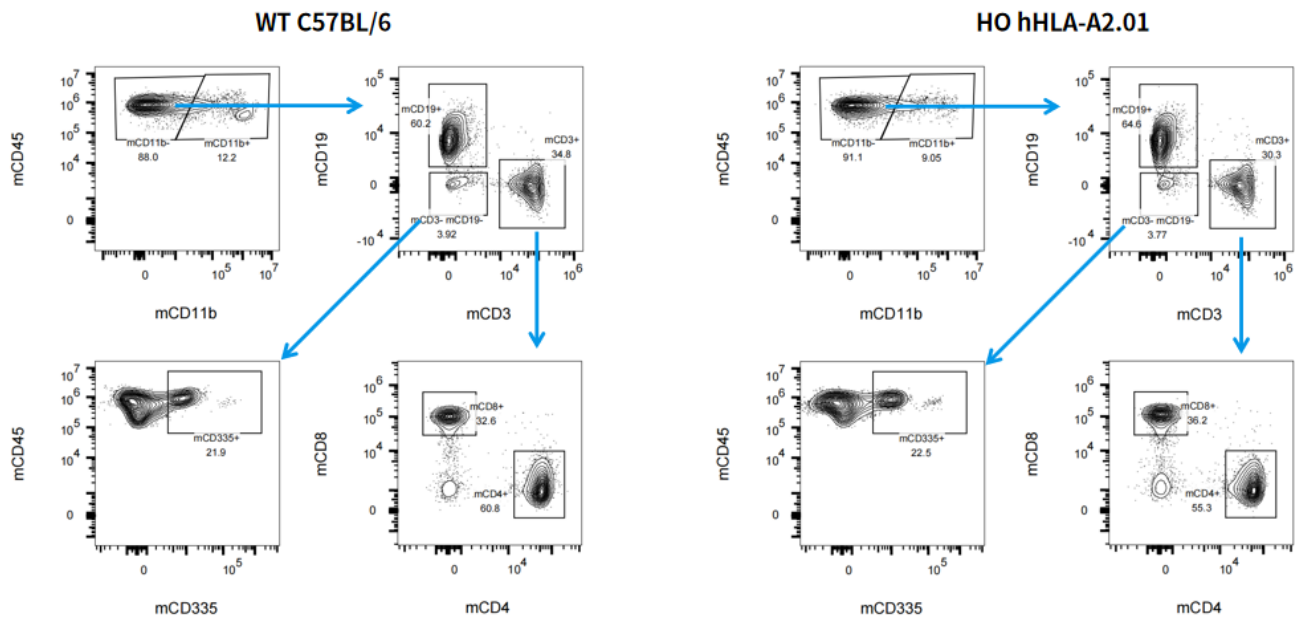


Fig.4 Analysis of leukocytes cell subpopulation in Blood (female, 6-8wks).