

# Mrgpra3-2A-GFPCre

<b>Nomenclature</b>	C57BL/6Smoc- <i>Mrgpra3</i> <sup>em1(2A-GFPCre)Smoc</sup>
<b>Cat. NO.</b>	NM-KI-234359
<b>Strain State</b>	Repository Live

## Gene Summary

<b>Gene Symbol</b> <b>Mrgpra3</b>	<b>Synonyms</b>	Mrga3
	<b>NCBI ID</b>	<a href="#">233222</a>
	<b>MGI ID</b>	<a href="#">2684085</a>
	<b>Ensembl ID</b>	<a href="#">ENSMUSG00000078698</a>
	<b>Human Ortholog</b>	MRGPRA3

## Model Description

The 2A-GFPCre expression cassette was knocked into the *Mrgpra3* gene stop codon site.

\*Literature published using this strain should indicate: *Mrgpra3*-2A-GFPCre mice (Cat. NO. NM-KI-234359) were purchased from Shanghai Model Organisms Center, Inc..

## Validation Data

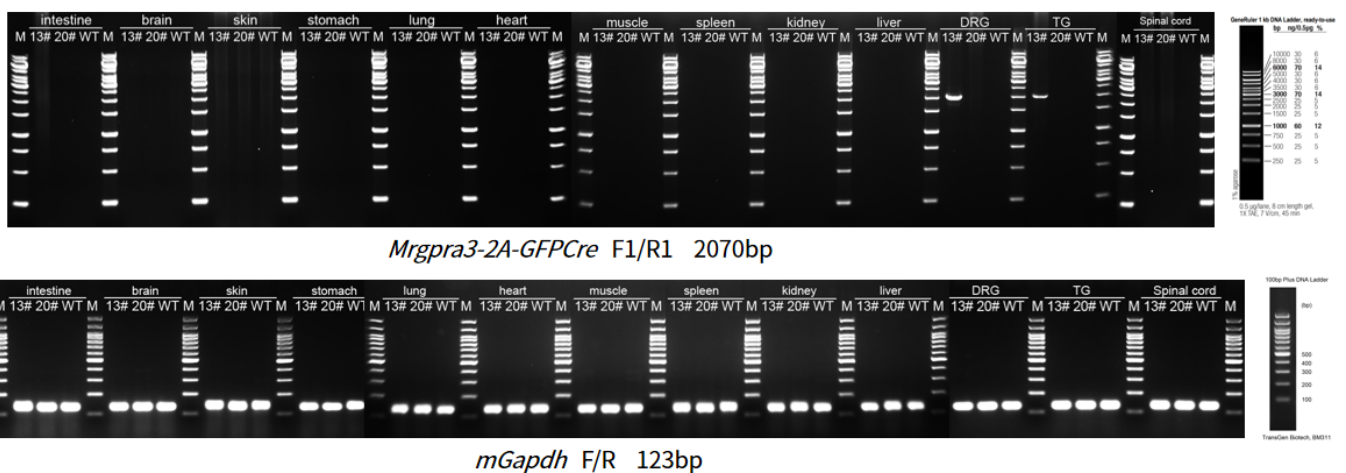


Fig.1 Detection of *Mrgpra3*-2A-GFPCre expression in DRG, TG, brain, Spinal cord, heart, liver,

spleen, lung, kidney, skin, muscle, stomach and intestine by RT-PCR.

Mrgpra3-2A-GFPCre+: one band at 2070 bp with primers F1/R1 (Mrgpra3-2A-GFPCre) in DRG and TG.

Abbr. DRG, dorsal root ganglion; TG, trigeminal ganglia; M, DNA marker; WT, wild type.

---