

# CT26-hTROP2

## Strain Information

Cat. NO.	NM-S24A-TM38
Cell Line	CT26-hTROP2
Strain State	Validation of tumorigenic capacity completed
Model	TROP2 gene humanized CT26 cell line
Description	*Literature published using this strain should indicate: CT26-hTROP2 cell line (Cat. NO. NM-S24A-TM38) was purchased from Shanghai Model Organisms Center, Inc..

## Validation Data

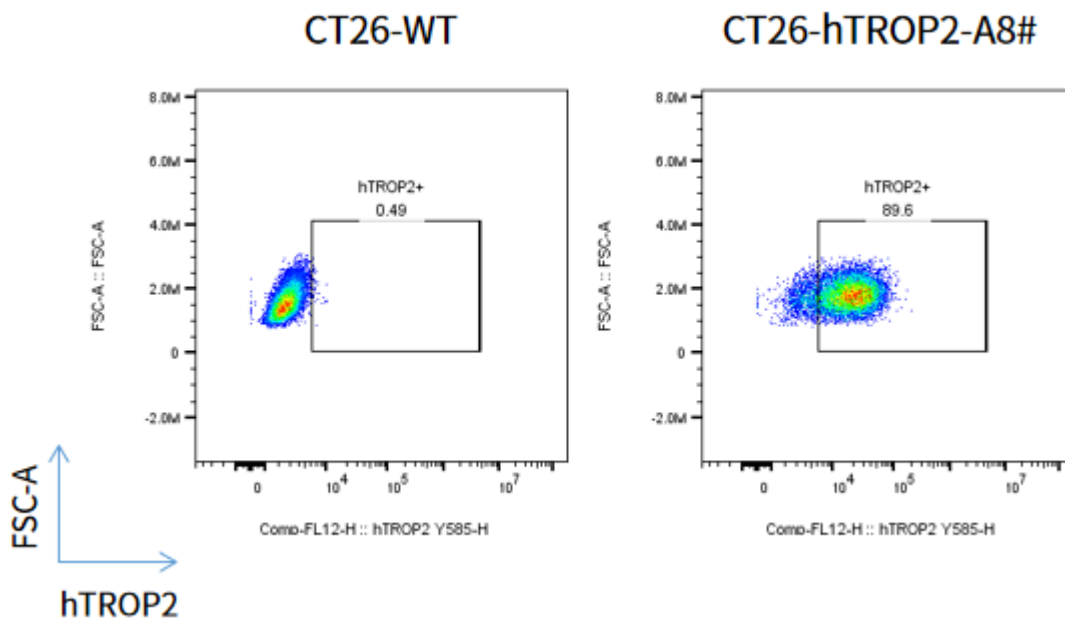


Fig.1 hTROP2 expression on in vitro cultured cells of CT26-hTROP2.

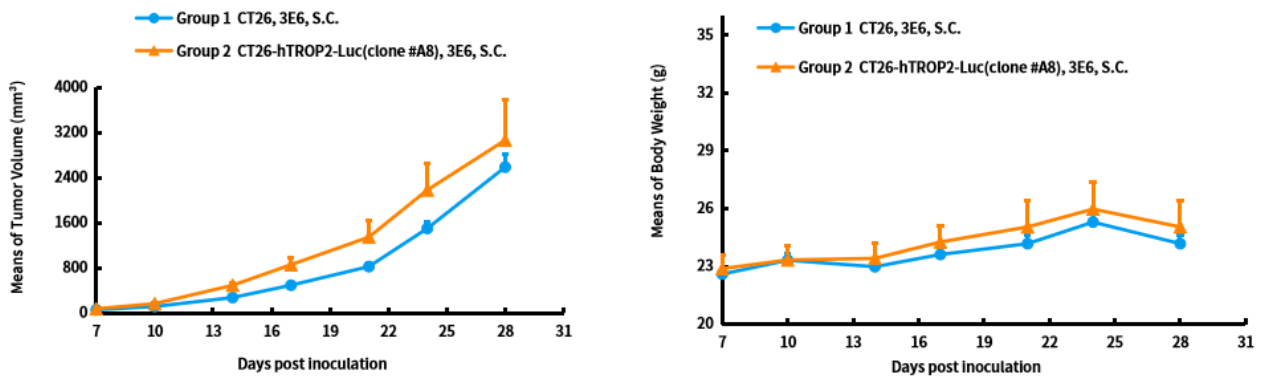


Fig.2 In vivo validation of CT26-hTROP2 in BALB/c mice. BALB/c mice were inoculated with CT26-hTROP2 subcutaneously at  $3 \times 10^6$  cells/mouse inoculum for tumor development. The day of vaccination for mice is defined as Day 0, and tumor measurement and weight measurement begin on the 7th day after vaccination, twice a week.

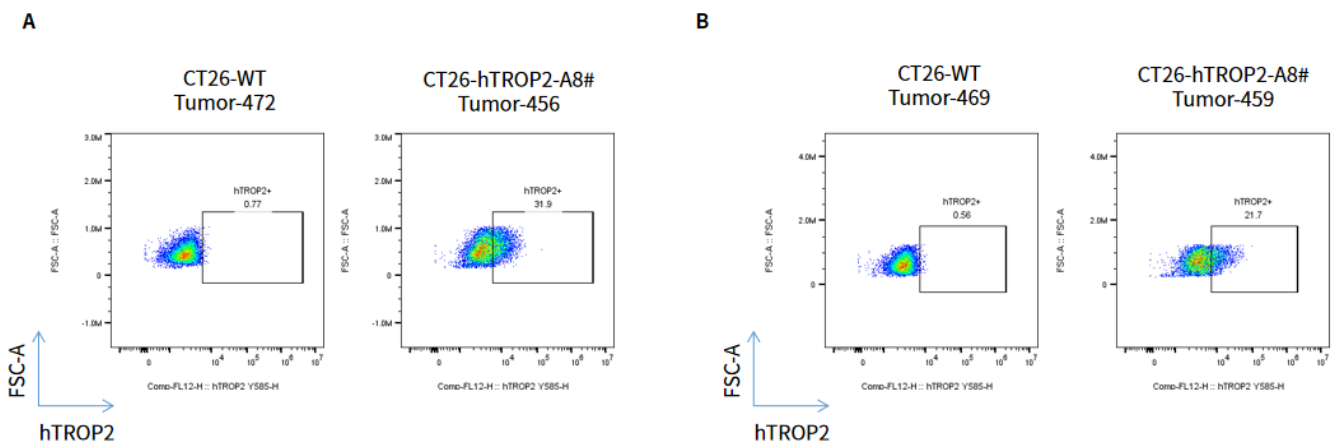


Fig.3 hTROP2 expression in tumors after in vivo growth of CT26-hTROP2 in wild type BALB/c mice. When the MTV reaches 500-800 mm<sup>3</sup>, take one tube from each group and send it to FACS for testing (Markers: L/D, mCD45, hTROP2). A, the MTV reaches 800 mm<sup>3</sup>. B, the MTV reaches 1500 mm<sup>3</sup>.