

Daudi-Luc

Strain Information

Cat. NO.	NM-BL02-1
Cell Line	Daudi-Luc
Strain State	Validation of tumorigenic capacity completed
Model	Luciferase-labeled Daudi-Luc cell line
Description	*Literature published using this strain should indicate: Daudi-Luc cell line (Cat. NO. NM-BL02-1) was purchased from Shanghai Model Organisms Center, Inc..

Validation Data

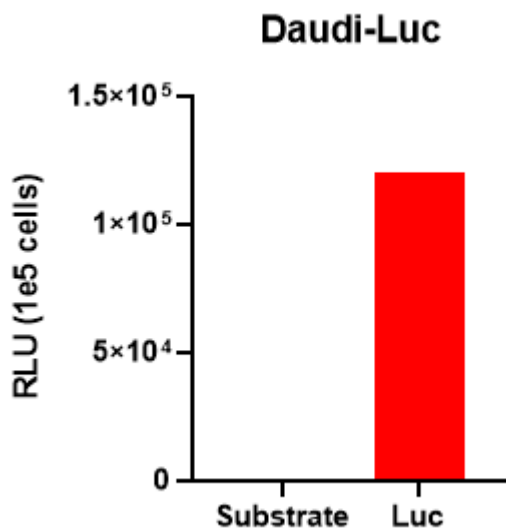


Fig1. Luciferase activity assay of Daudi-Luc cell line

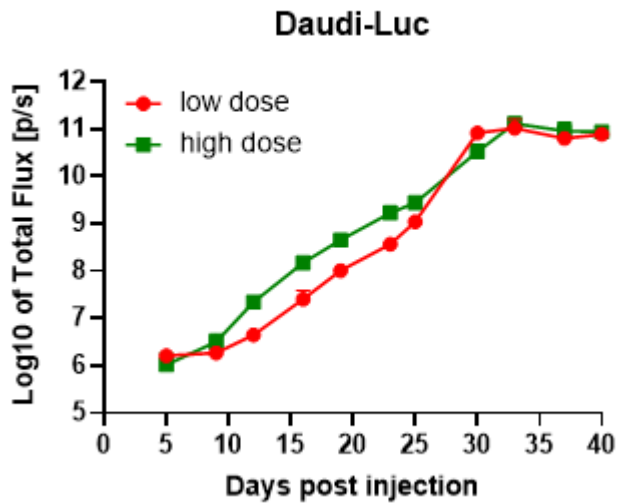


Fig2. Signal increase curve in Daudi-Luc xenograft model (n=5)

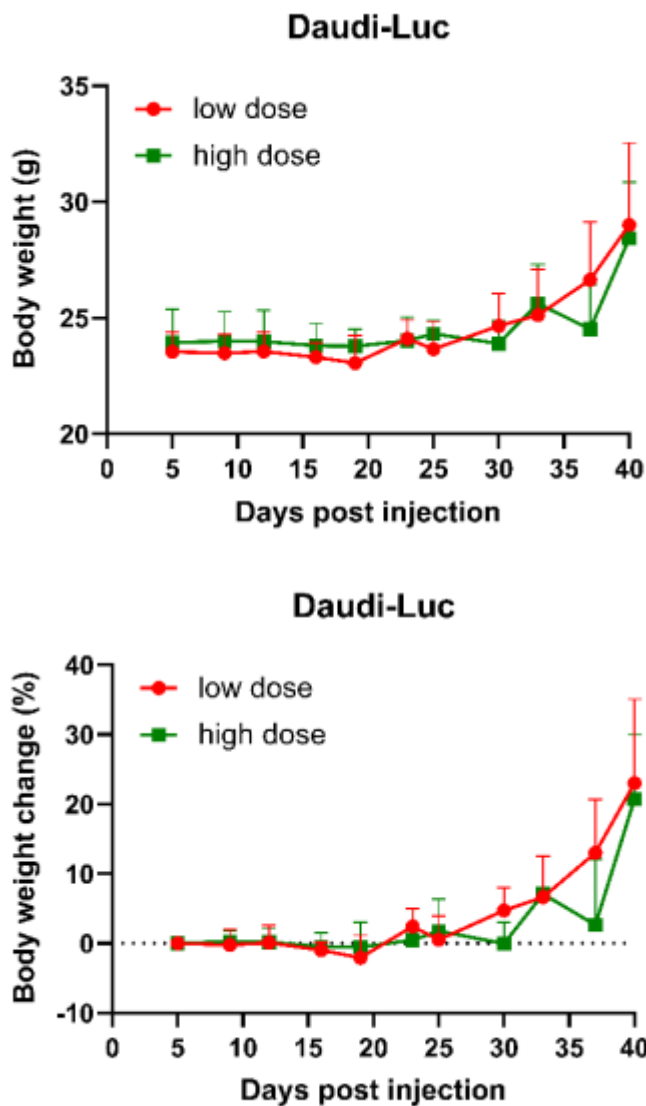


Fig3. Body weight change of Daudi-Luc xenograft model (n=5)

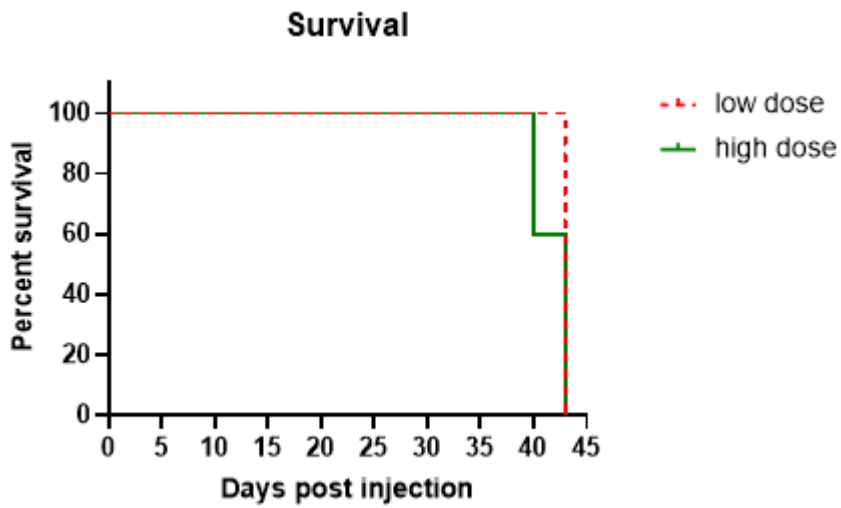


Fig4. Survival curve of Daudi-Luc xenograft mouse model (n=5)

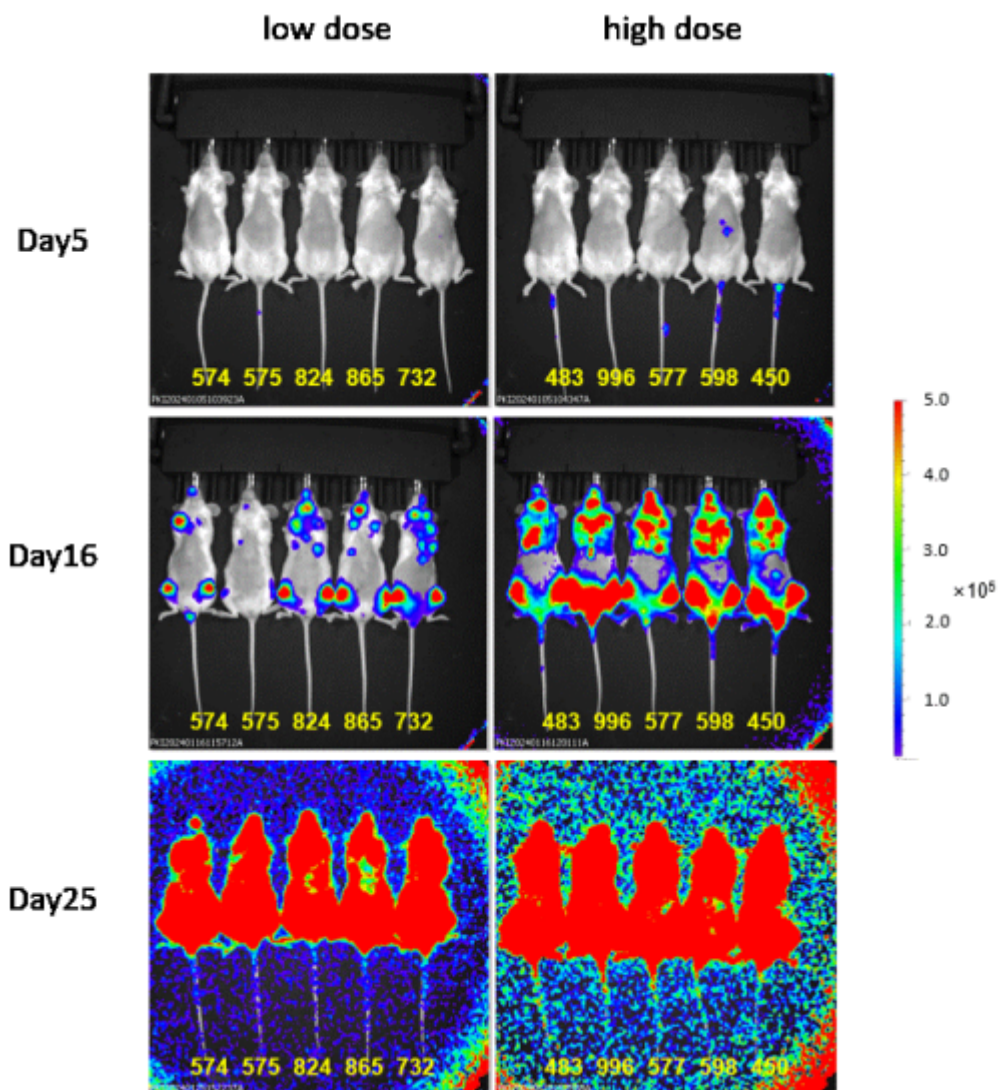


Fig5. Bioluminescence imaging of Daudi-Luc xenograft mouse model

