

# Trp53-KO/Kras-G12D

## Strain Information

Cat. NO.	NM-YD08
Cell Line	Trp53-KO/Kras-G12D
Strain State	Validation of tumorigenic capacity completed
Model Description	Trp53-KO/Kras-G12D cell line is murine cell derived from lung cancer model of the offspring produced by mating Trp53-Flox mice (NM-CKO-18005) and Kras-LSL-G12D mice (NM-KI-190003).
	*Literature published using this strain should indicate: Trp53-KO/Kras-G12D cell line (Cat. NO. NM-YD08) was purchased from Shanghai Model Organisms Center, Inc..

## Validation Data

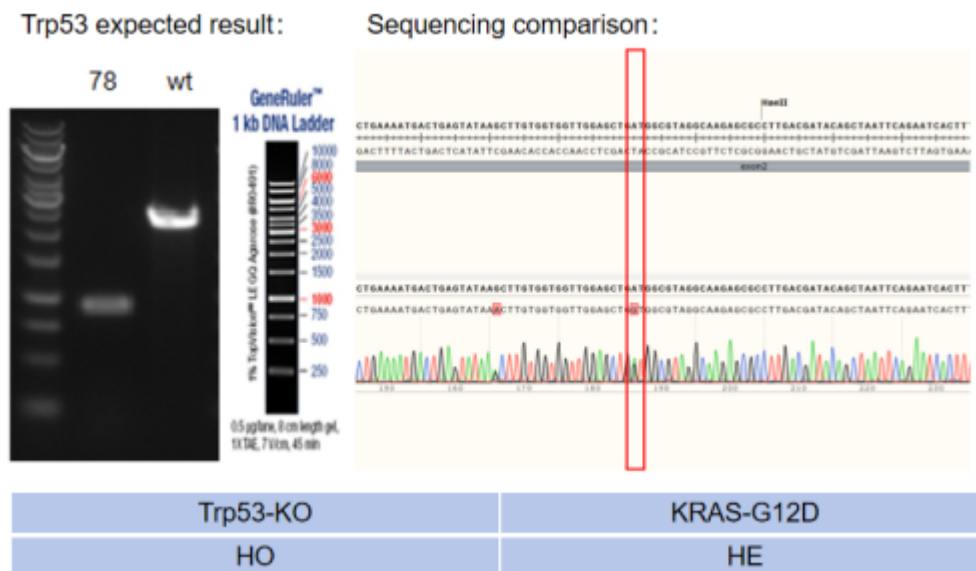


Fig1. Genotype identification of Trp53-KO/Kras-G12D cell line

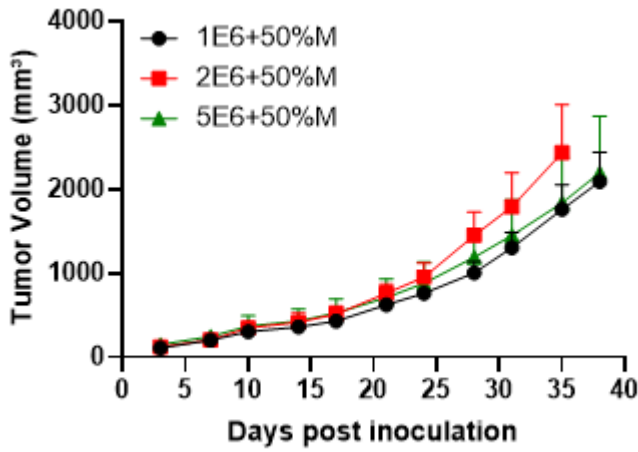


Fig2. Tumor growth curve in Trp53-KO/Kras-G12D syngeneic model (n=10)

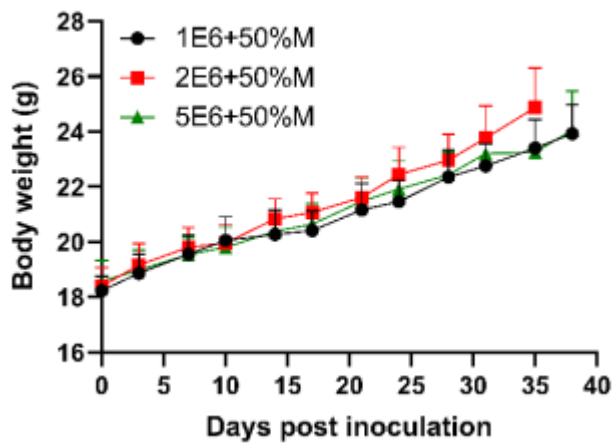
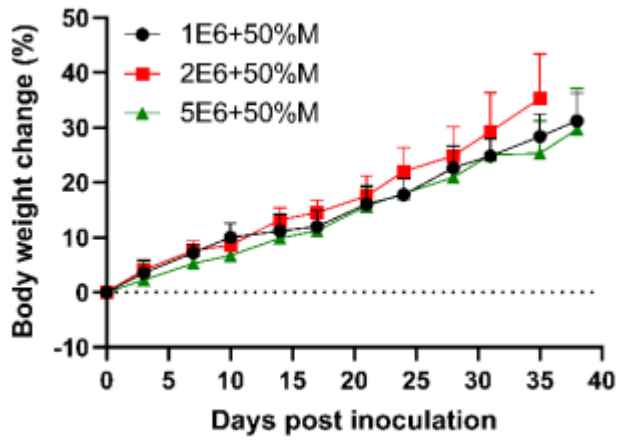


Fig3. Body weight change of Trp53-KO/Kras-G12D syngeneic model (n=10)