

Foxl1-2A-CreERT2

Nomenclature	C57BL/6Smoc- <i>Foxl1</i> ^{em1(2A-CreERT2)Smoc}
Cat. NO.	NM-KI-00135
Strain State	Repository Live

Gene Summary

Gene Symbol Foxl1	Synonyms	Fkh6; fkh-6; FREAC7
	NCBI ID	14241
	MGI ID	1347469
	Ensembl ID	ENSMUSG00000097084
	Human Ortholog	FOXL1

Model Description

A 2A-CreERT2 coexpression cassette is inserted before the stop codon of mouse Foxl1 gene via homologous recombination to establish a Foxl1-CreERT2 recombinase tool strain. This strain can be used to knockout target gene inFoxl1+ cells after tamoxifen treatment when crossed with flox mice.

*Literature published using this strain should indicate: Foxl1-2A-CreERT2 mice (Cat. NO. NM-KI-00135) were purchased from Shanghai Model Organisms Center, Inc..

Validation Data

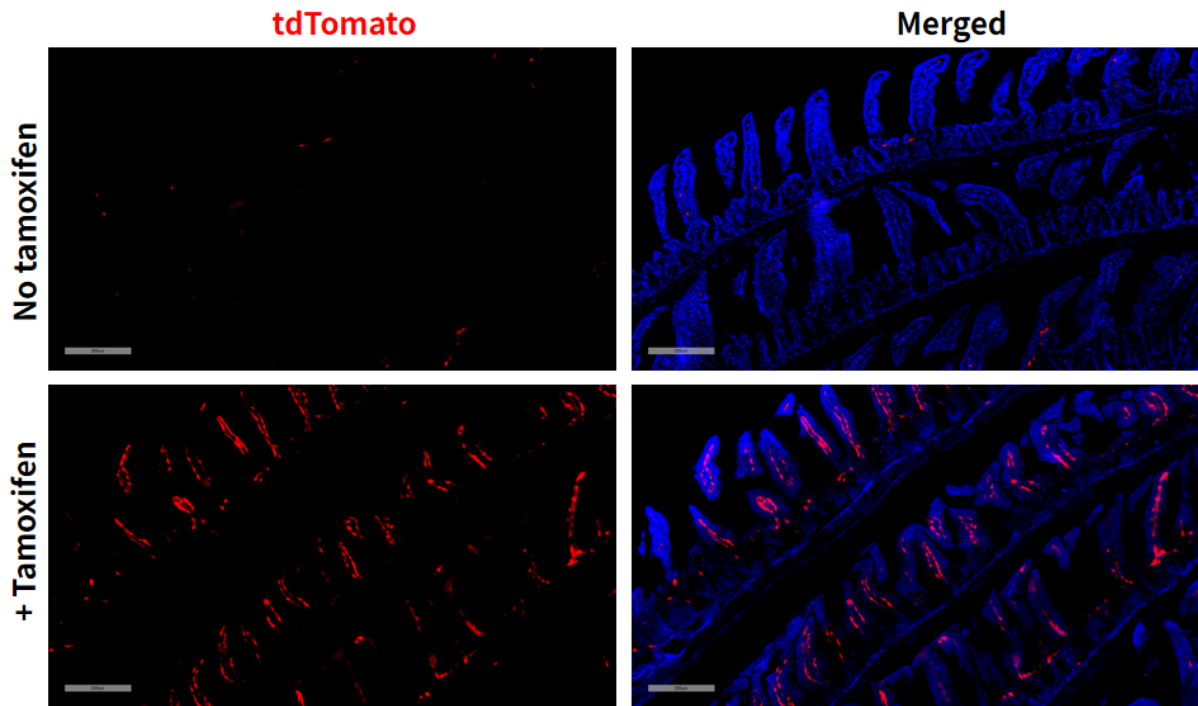


Fig 1. CreERT2-mediated recombination in small intestine of *Foxl1CreERT2/+; Rosa26tdTomato/+* mice.

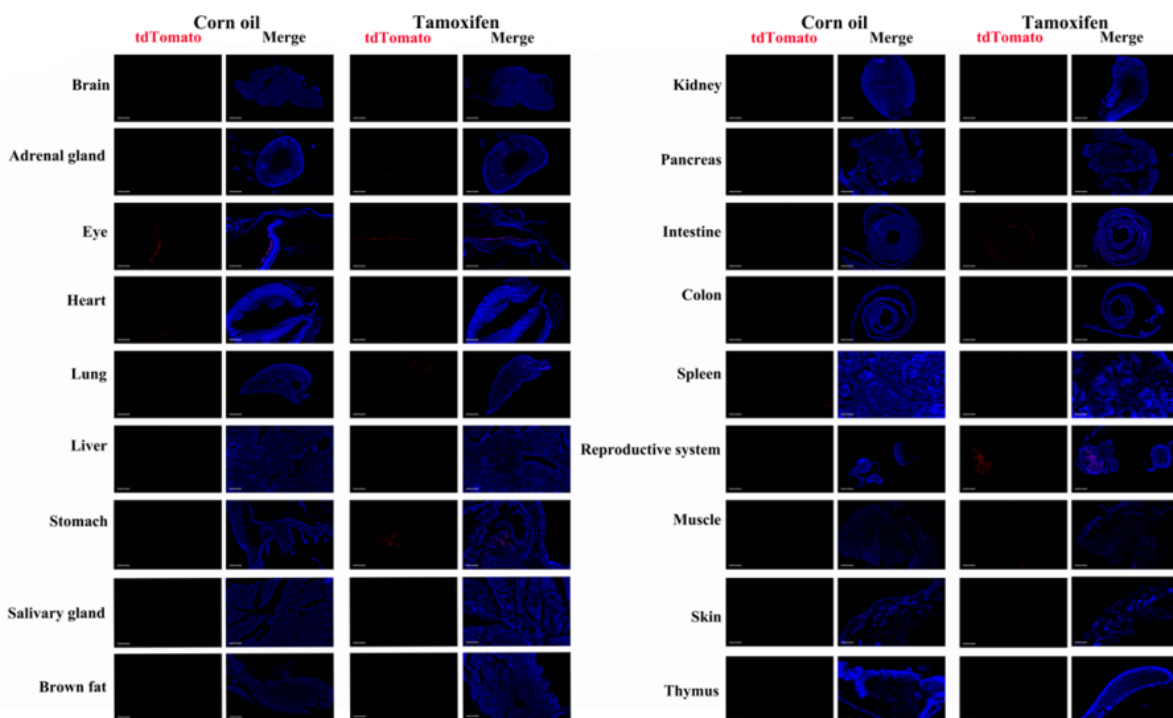


Fig 2. Detection of tdTomato (red) in various tissues of *Foxl1CreERT2/+; Rosa26tdTomato/+* mice. Expression tissues include: small intestine, colon, stomach, lung, kidney, ovary. A few cells expressed in brain, adrenal gland, muscle, thymus. Tissues that unexpressed include retina, liver, salivary glands, brown fat, pancreas, spleen, skin. (4.5-month old, female) (For more detailed information please contact our technical advisor.)

