

# Nphs2-CreERT2

<b>Nomenclature</b>	C57BL/6Smoc- <i>Nphs2</i> <sup>tm1(IRES-CreERT2)Smoc</sup>
<b>Cat. NO.</b>	NM-KI-00128
<b>Strain State</b>	Embryo cryopreservation

## Gene Summary

<b>Gene Symbol</b> Nphs2	<b>Synonyms</b>	PDCN; SRN1
	<b>NCBI ID</b>	<a href="#">170484</a>
	<b>MGI ID</b>	<a href="#">2157018</a>
	<b>Ensembl ID</b>	<a href="#">ENSMUSG00000026602</a>
	<b>Human Ortholog</b>	NPHS2

## Model Description

An IRES-CreERT2 co-expression cassette is inserted into 3'UTR region of Nphs2 gene via homologous recombination to establish a tamoxifen inducible Nphs2-CreERT2 tool stain.

\*Literature published using this strain should indicate: Nphs2-CreERT2 mice (Cat. NO. NM-KI-00128) were purchased from Shanghai Model Organisms Center, Inc..

## Validation Data

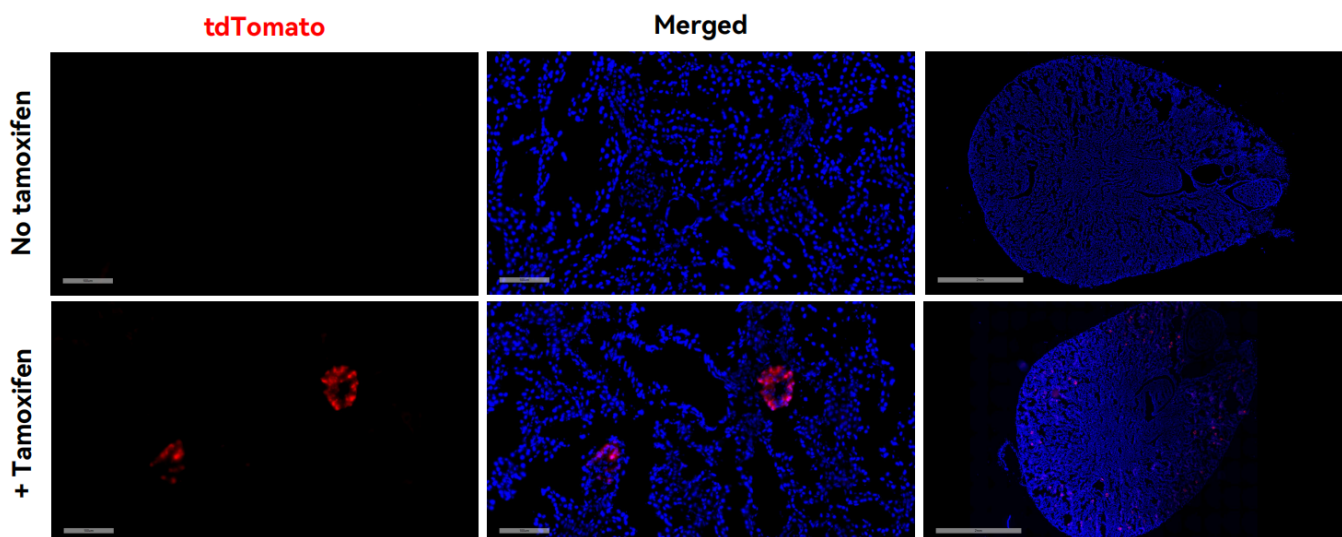


Fig1. CreERT2-mediated recombination in Corneal stromal of  $Nphs2^{CreERT2/+}$ ;  $Rosa26^{tdTomato/+}$  mouse.

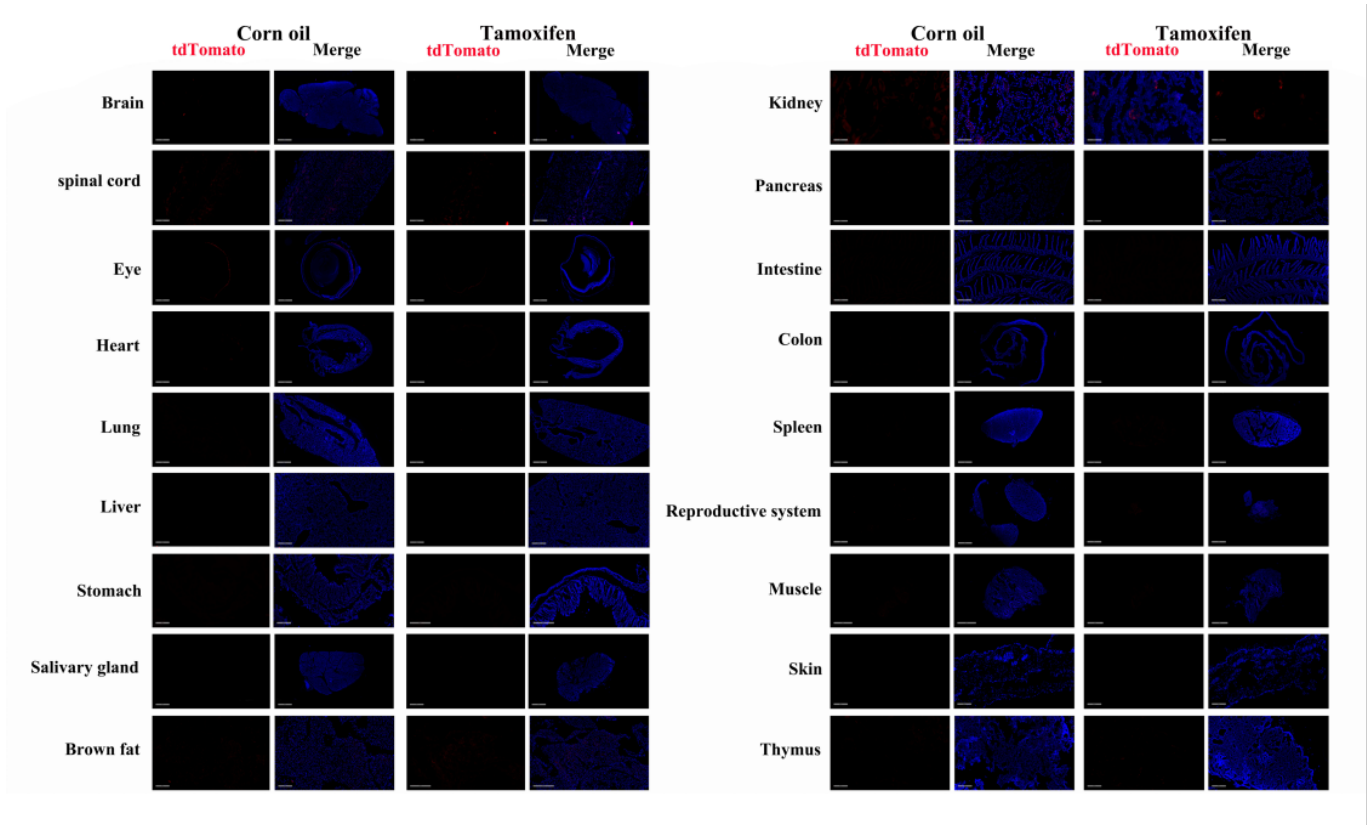


Fig2. Detection of tdTomato (red) in various tissues of  $Nphs2^{CreERT2/+}$ ;  $Rosa26^{tdTomato/+}$  mice. (For more detailed information please contact our technical advisor.)