

Cd2-2A-CreERT2

Nomenclature	C57BL/6Smoc- <i>Cd2</i> ^{em1(2A-CreERT2-WPRE-pA)Smoc}
Cat. NO.	NM-KI-18017
Strain State	Repository Live

Gene Summary

Gene Symbol Cd2	Synonyms	Ly37; LFA-2; Ly-37
	NCBI ID	12481
	MGI ID	88320
	Ensembl ID	ENSMUSG00000027863
	Human Ortholog	CD2

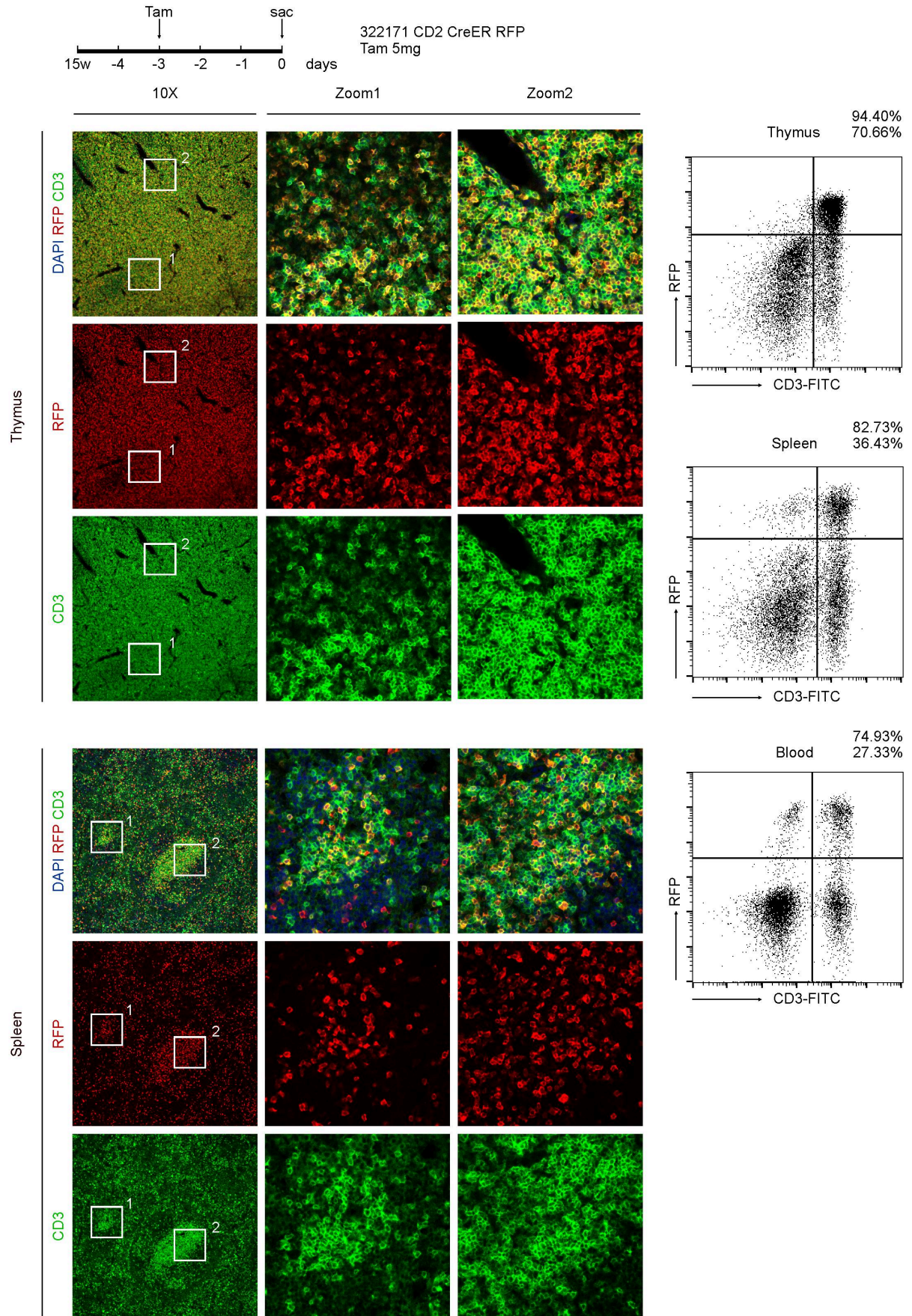
Model Description

A 2A-CreERT2-WPRE-pA coexpression cassette is inserted before the stop codon of mouse Cd2 gene via homologous recombination to establish a tamoxifen inducible Cd2-CreERT2 tool strain. This strain can be used to knockout target gene in T cells and B cells after tamoxifen treatment when crossed with mice which carry loxp sites flanking target gene.

Research Application: Cre recombinase tool

*Literature published using this strain should indicate: Cd2-2A-CreERT2 mice (Cat. NO. NM-KI-18017) were purchased from Shanghai Model Organisms Center, Inc..

Validation Data



The result shows that expression pattern of RFP in T cells of Cd2-(2A-CreERT2-WPRE-pA);RFP.
