

Lyz2-2A-CreERT2

Nomenclature	C57BL/6Smoc- <i>Lyz2</i> ^{em1(2A-CreERT2-WPRE-pA)Smoc}
Cat. NO.	NM-KI-18018
Strain State	Repository Live

Gene Summary

Gene Symbol Lyz2	Synonyms	Lys; Lzm; Lzp; Lysm; Lyzs; Lyzf2; Lzm-s1; AI326280
	NCBI ID	17105
	MGI ID	96897
	Ensembl ID	ENSMUSG00000069516
	Human Ortholog	LYZ2

Model Description

A 2A-CreERT2-WPRE-pA coexpression cassette is inserted before the stop codon of mouse *Lyz2* gene via homologous recombination to establish a tamoxifen inducible *Lyz2*-CreERT2 tool strain. This strain can be used to knockout target gene in *Lyz2*⁺ cells after tamoxifen treatment when crossed with mice which carry loxp sites flanking target gene.

Research Application: Cre recombinase tool

*Literature published using this strain should indicate: *Lyz2*-2A-CreERT2 mice (Cat. NO. NM-KI-18018) were purchased from Shanghai Model Organisms Center, Inc..

Validation Data

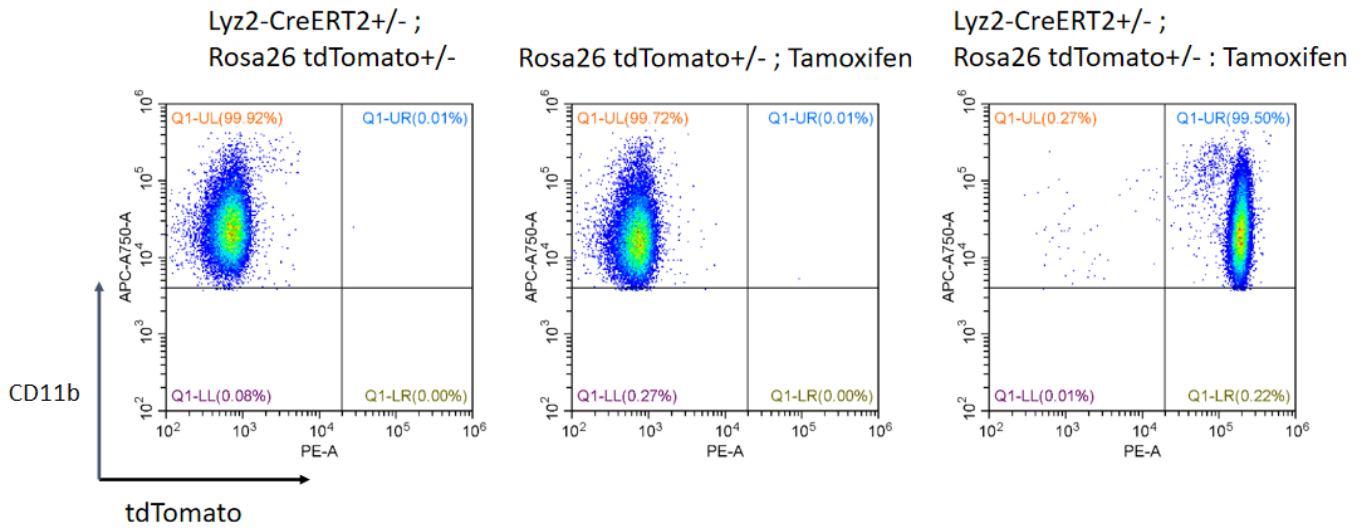


Fig1 Evaluation of CreERT2 recombination in Lyz2 Cre+/-;R26 tdT+/- mice.