

Sftpc-IRES-CreERT2

Nomenclature	C57BL/6Smoc- <i>Sftpc</i> ^{em(IRES-CreERT2)Smoc}
Cat. NO.	NM-KI-18020
Strain State	Repository Live

Gene Summary

Gene Symbol Sftpc	Synonyms	SP5; SPC; SP-C; Sftp2; Bricd6; Sftp-2; pro-SpC
	NCBI ID	20389
	MGI ID	109517
	Ensembl ID	ENSMUSG00000022097
	Human Ortholog	SFTPC

Model Description

An IRES-CreERT2 co-expression cassette is inserted into 3'UTR region of Sftpc gene via homologous recombination to establish a tamoxifen inducible Sftpc-CreERT2 tool strain. *This strain CreERT2 has leakage (see validation data for details), please select according to the purpose of the study.

Research Application: Cre recombinase tool

*Literature published using this strain should indicate: Sftpc-IRES-CreERT2 mice (Cat. NO. NM-KI-18020) were purchased from Shanghai Model Organisms Center, Inc..

Validation Data

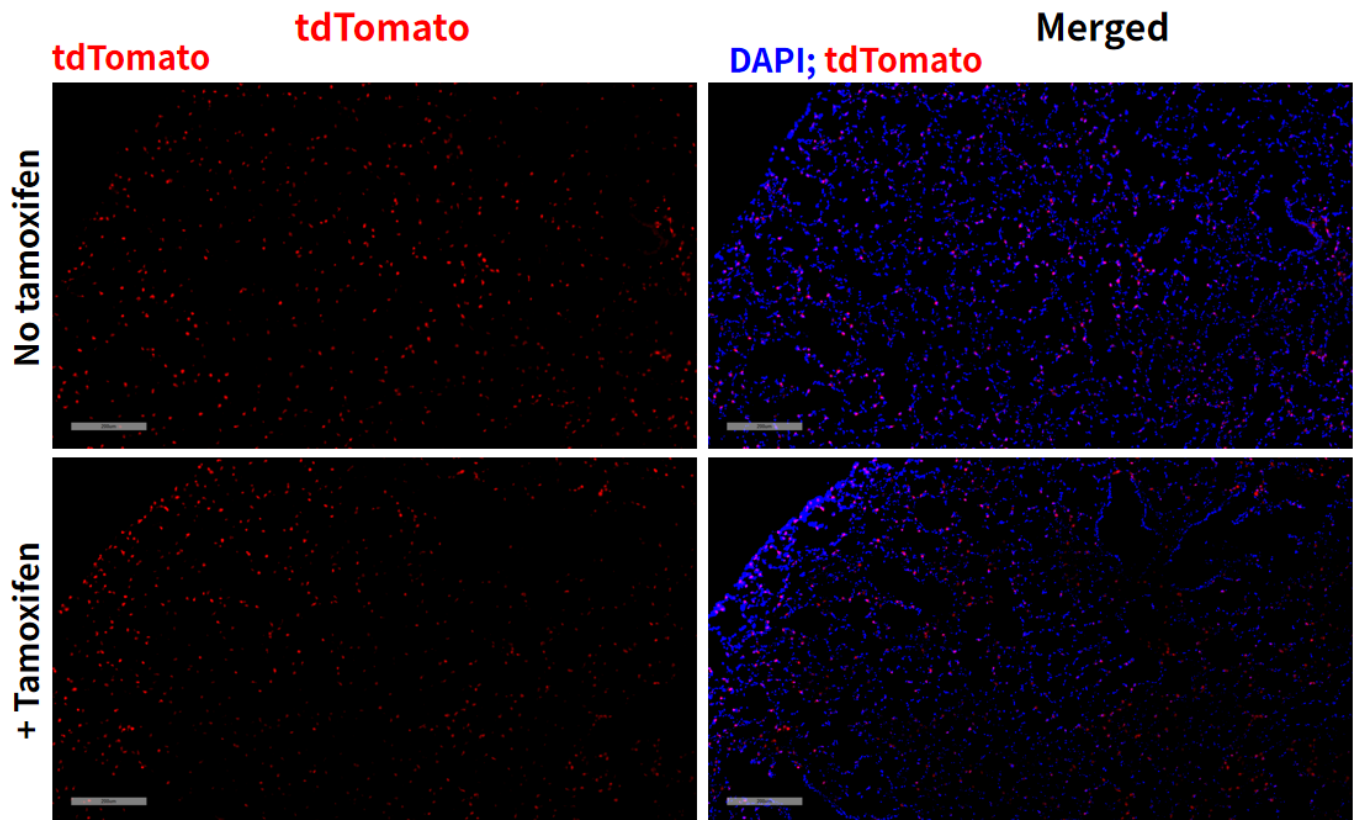


Fig1. Cre mediated recombination in lung of *Sftpc^{CreERT2/+};Rosa26^{tdTomato/+}* mouse.

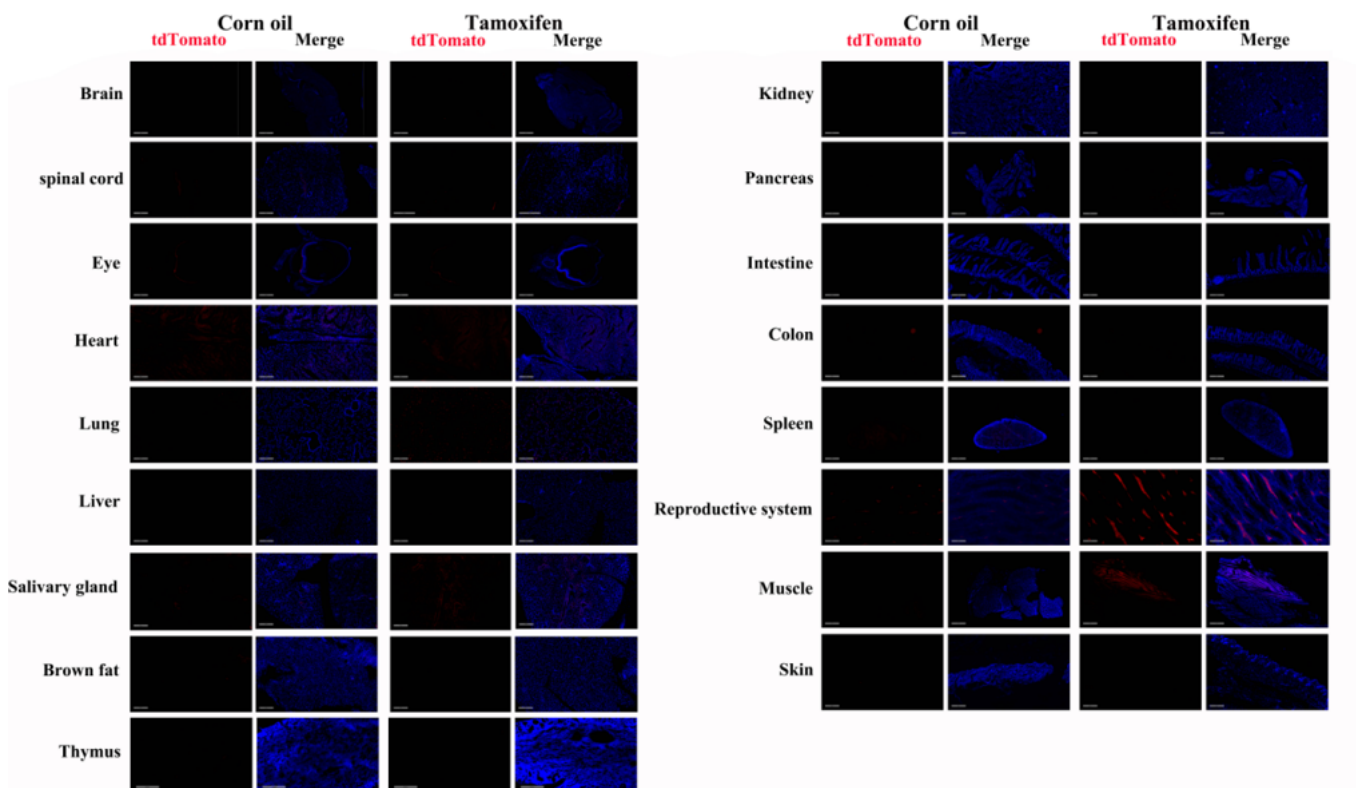


Fig2. Detection of tdTomato(red) in various tissues of *Sftpc^{CreERT2/+};Rosa26^{tdTomato/+}* mouse. Expression tissues include: lung epithelial cells, testis interstitial cells, salivary glands, muscles. Tissues that unexpressed include brain, spinal cord,

retina, heart, liver, brown fat, thymus, kidney, pancreas, large and small intestine, spleen, and skin.(2-months old, male) (For more detailed information please contact our technical advisor.)
