

# Zbtb46-2A-CreERT2

<b>Nomenclature</b>	C57BL/6Smoc- <i>Zbtb46</i> <sup>em1(2A-CreERT2-WPRE-pA)Smoc</sup>
<b>Cat. NO.</b>	NM-KI-18021
<b>Strain State</b>	Embryo cryopreservation

## Gene Summary

<b>Gene Symbol</b> Zbtb46	<b>Synonyms</b>	BZEL; Btbd4; 2610019F01Rik; 4933406L05Rik
	<b>NCBI ID</b>	<a href="#">72147</a>
	<b>MGI ID</b>	<a href="#">1919397</a>
	<b>Ensembl ID</b>	<a href="#">ENSMUSG00000027583</a>
	<b>Human Ortholog</b>	ZBTB46

## Model Description

A 2A-CreERT2-WPRE-pA coexpression cassette is inserted before the stop codon of mouse *Zbtb46* gene via homologous recombination to establish a tamoxifen inducible *Zbtb46*-CreERT2 tool strain. This strain can be used to knockout target gene in *Zbtb46*<sup>+</sup> cells after tamoxifen treatment when crossed with mice which carry loxp sites flanking target gene.

**Research Application:** Cre recombinase tool

\*Literature published using this strain should indicate: *Zbtb46*-2A-CreERT2 mice (Cat. NO. NM-KI-18021) were purchased from Shanghai Model Organisms Center, Inc..

## Validation Data

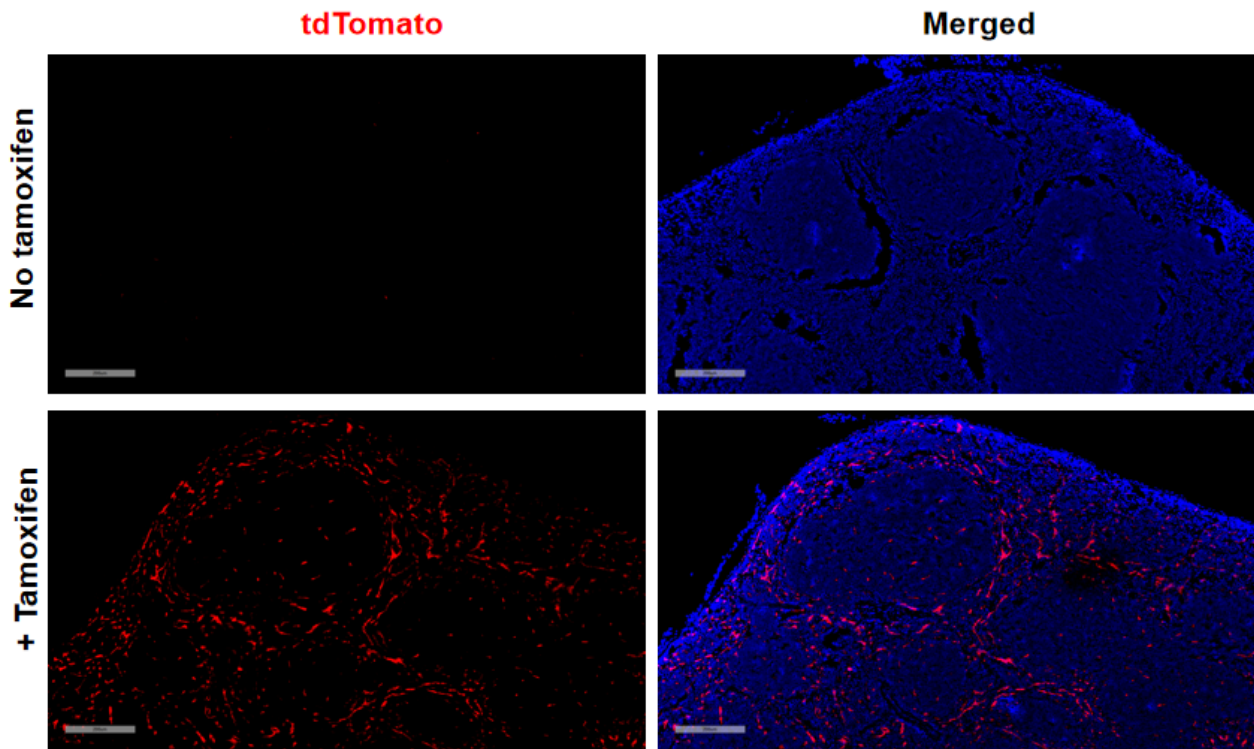


Fig 1. Cre-mediated recombination in spleen of  $Zbtb46^{CreERT2/+}; Rosa26^{tdTomato/+}$  mice.

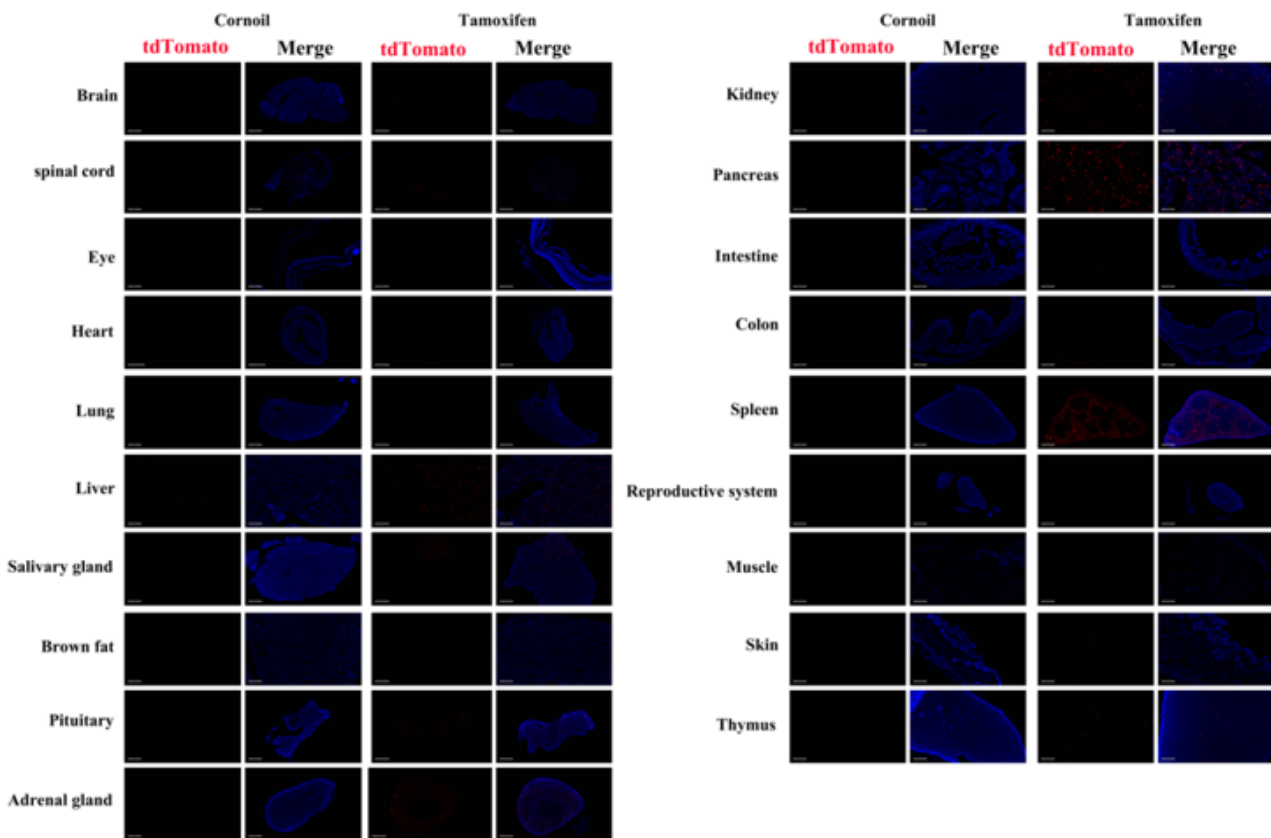


Fig 2. Detection of tdTomato (red) in various tissues of  $Zbtb46^{CreERT2/+}; Rosa26^{tdTomato/+}$ . Expression tissues include: liver, salivary gland, pituitary gland, adrenal gland, kidney, pancreas, spleen, testis, thymus. A few cells expressed in cerebellum, spinal cord, heart, brown fat, small intestine,

colon, muscle, skin. (6.5-8 weeks old, male) (For more detailed information please contact our technical advisor.)

---