

Cdkn2a-Luc-2A-tdTomato-2A-CreERT2

Nomenclature	C57BL/6Smoc- <i>Cdkn2a</i> ^{em(Luc-tdTomato-CreERT2)Smoc}
Cat. NO.	NM-KI-18039
Strain State	Repository Live

Gene Summary

Gene Symbol Cdkn2a	Synonyms	Arf; p16; MTS1; Pctr1; p19ARF; p16INK4a; p19; ARF-INK4a; INK4a-ARF; Ink4a/Arf; p16(INK4a)
	NCBI ID	12578
	MGI ID	104738
	Ensembl ID	ENSMUSG00000044303
	Human Ortholog	CDKN2A

Model Description

A Luc-2A-tdTomato-2A-CreERT2-WPRE-pA cassette was fused in-frame with exon2 of Cdkn2a-201 transcript such that the exogenous proteins would be translated followed by the first 62aa of Cdkn2a.

*Literature published using this strain should indicate: Cdkn2a-Luc-2A-tdTomato-2A-CreERT2 mice (Cat. NO. NM-KI-18039) were purchased from Shanghai Model Organisms Center, Inc..

Validation Data

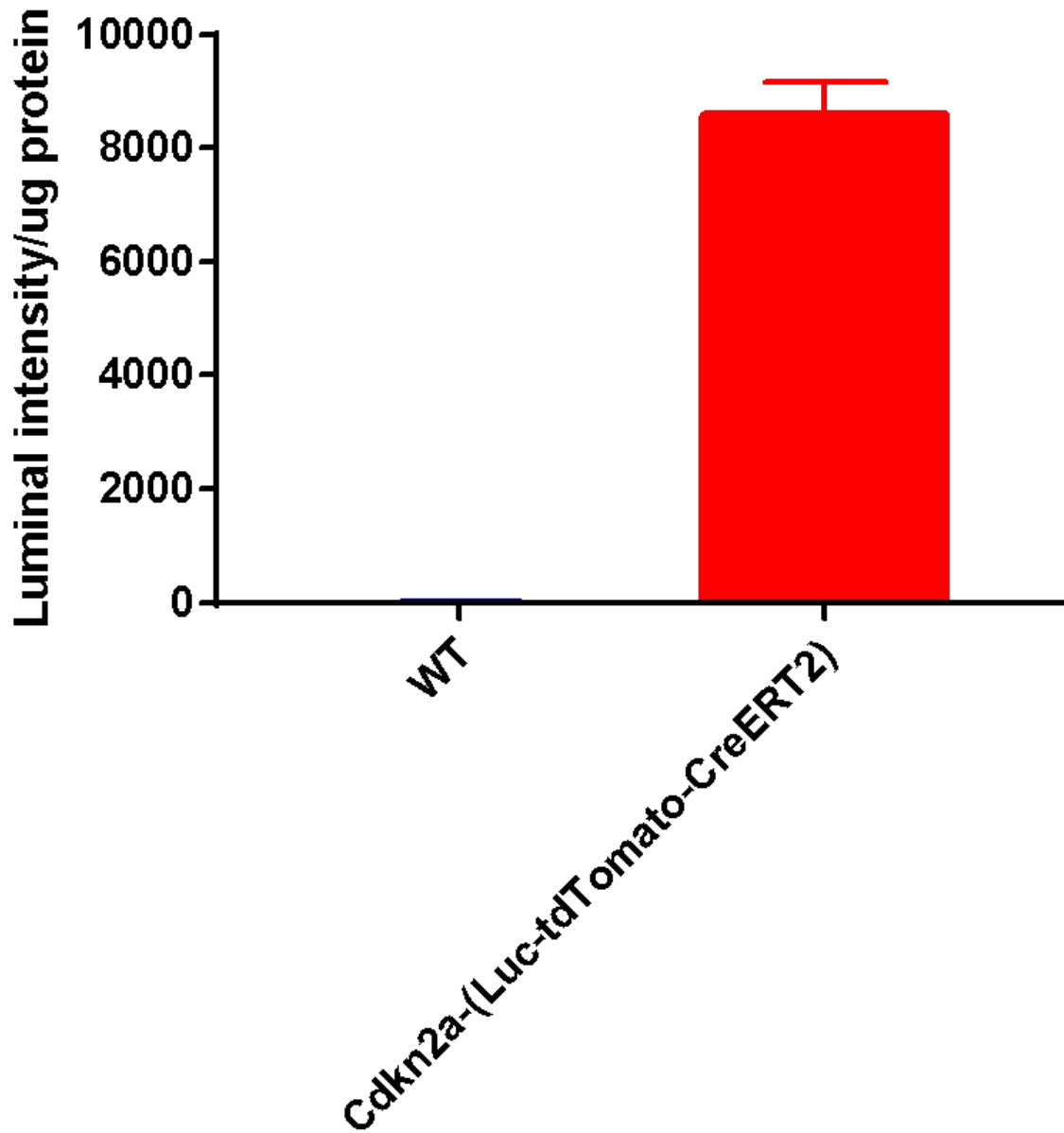


Fig1 Luciferase reporter assays in MEF cells(WT and Cdkn2a KI MEFs).