

# Pdx1-2A-CreERT2

<b>Nomenclature</b>	C57BL/6Smoc- <i>Pdx1</i> <sup>em1(Avi tag-2A-CreERT2)Smoc</sup>
<b>Cat. NO.</b>	NM-KI-18042
<b>Strain State</b>	Sperm cryopreservation

## Gene Summary

<b>Gene Symbol</b> pdx1	<b>Synonyms</b>	lpf1, IDX-1, IPF-1, Mody4, STF-1, pdx-1
	<b>NCBI ID</b>	<a href="#">18609</a>
	<b>MGI ID</b>	<a href="#">102851</a>
	<b>Ensembl ID</b>	<a href="#">ENSMUSG00000029644</a>

## Model Description

An Avi tag-2A-CreERT2 cassette was inserted at the Pdx1 gene stop codon site .

\*Literature published using this strain should indicate: Pdx1-2A-CreERT2 mice (Cat. NO. NM-KI-18042) were purchased from Shanghai Model Organisms Center, Inc..

## Validation Data

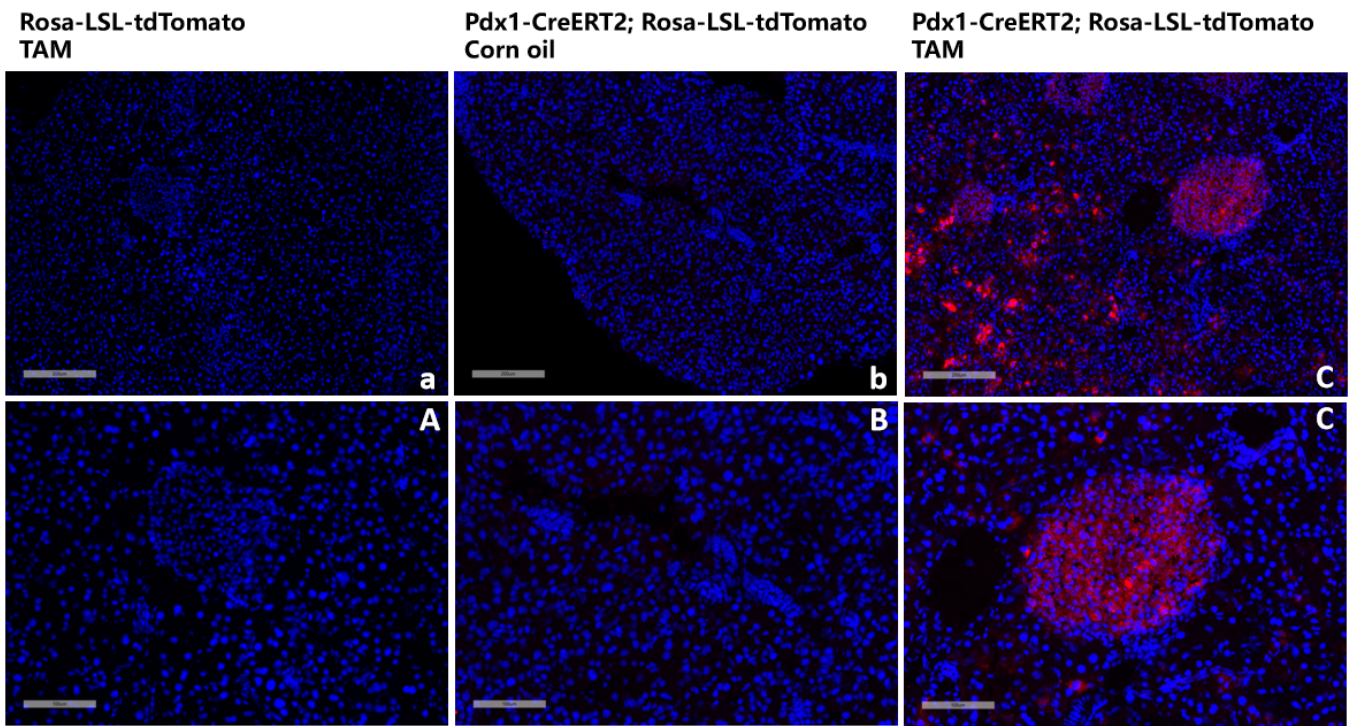


Fig1. CreER-mediated recombination in pancreas of Pdx1-CreERT2<sup>+/-</sup>;R26-LSL-tdTomato<sup>+/-</sup> .