

# Lyz2-CreERT2-IRES-EGFP

<b>Nomenclature</b>	C57BL/6Smoc- <i>Lyz2</i> <sup>em2(CreERT2-IRES-EGFP)Smoc</sup>
<b>Cat. NO.</b>	NM-KI-18047
<b>Strain State</b>	Repository Live

## Gene Summary

<b>Gene Symbol</b> <b>Lyz2</b>	<b>Synonyms</b>	Lys; Lzm; Lzp; Lysm; Lyzs; Lyzf2; Lzm-s1; AI326280
	<b>NCBI ID</b>	<a href="#">17105</a>
	<b>MGI ID</b>	<a href="#">96897</a>
	<b>Ensembl ID</b>	<a href="#">ENSMUSG00000069516</a>
	<b>Human Ortholog</b>	LYZ2

## Model Description

A Kozak-CreERT2-IRES-EGFP expression cassette was knocked into the *Lyz2* gene start codon site by homologous recombination.

**Research Application:** Cre recombinase activity in myeloid cells

\*Literature published using this strain should indicate: *Lyz2*-CreERT2-IRES-EGFP mice (Cat. NO. NM-KI-18047) were purchased from Shanghai Model Organisms Center, Inc..

## Validation Data

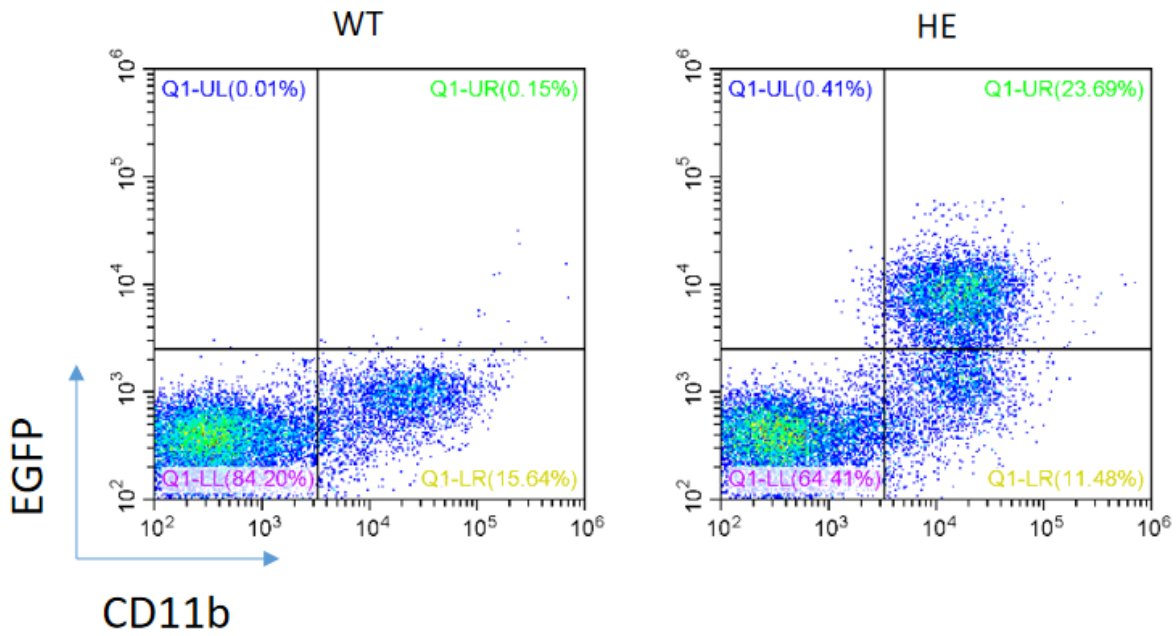


Fig1. Validation of EGFP expression in Peripheral blood CD11b+ cells by FACS.