

# Ccr2-KO

<b>Nomenclature</b>	C57BL/6Smoc- <i>Ccr2</i> <sup>em1Smoc</sup>
<b>Cat. NO.</b>	NM-KO-190018
<b>Strain State</b>	Repository Live

## Gene Summary

<b>Gene Symbol</b> Ccr2	<b>Synonyms</b>	Ckr2; Ccr2a; Ccr2b; Ckr2a; Ckr2b; mJe-r; Cmkbr2; Cc-ckr-2
	<b>NCBI ID</b>	<a href="#">12772</a>
	<b>MGI ID</b>	<a href="#">106185</a>
	<b>Ensembl ID</b>	<a href="#">ENSMUSG00000049103</a>
	<b>Human Ortholog</b>	CCR2

## Model Description

This Ccr2 knockout mouse model was generated by knocking out the exon 3 region of the Ccr2 .

**Research Application:** Immune-related

\*Literature published using this strain should indicate: Ccr2-KO mice (Cat. NO. NM-KO-190018) were purchased from Shanghai Model Organisms Center, Inc..

## Validation Data

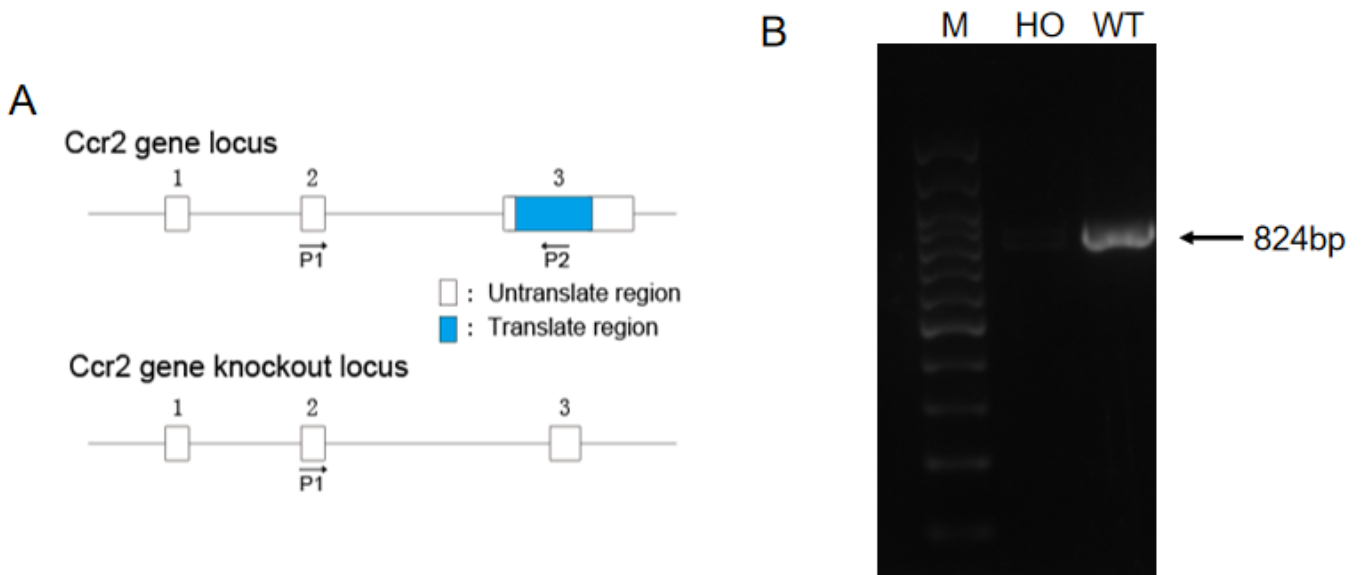


Fig1. Validation of *Ccr2* gene expression by RT-PCR.(A) Schematic diagram of primer design; (B) No product was obtained from *Ccr2* knockout homozygous mice, and the wild-type mice could obtain the 824bp target PCR product. (M, DNA marker; HO, homozygous; WT, wild type)

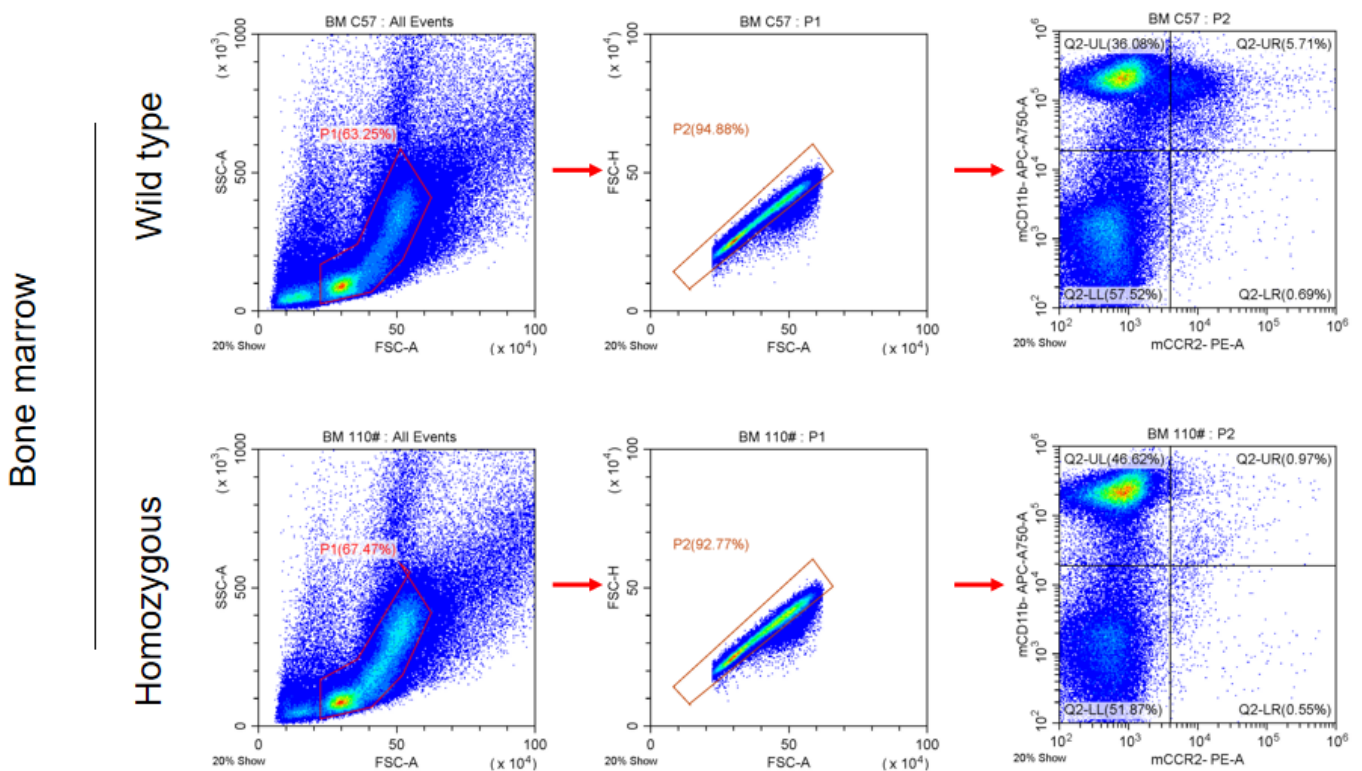


Fig2. Validation of CCR2 expression in the bone marrow by FACS. CCR2 expression could not be detected on CD11b+ cells of the *Ccr2* knockout homozygous mice.

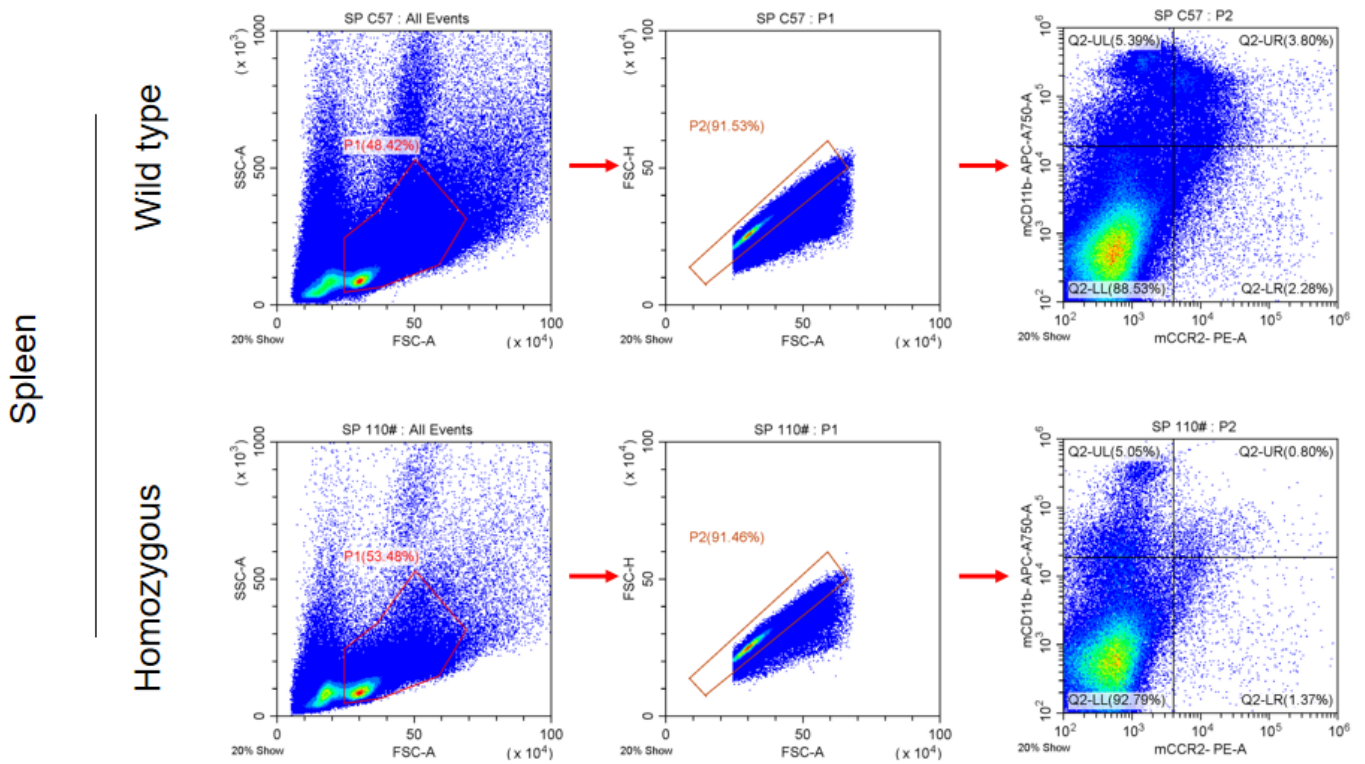


Fig3. Validation of CCR2 expression in the spleen by FACS. CCR2 expression could not be detected on CD11b+ cells of the Ccr2 knockout homozygous mice.

## Publications

[The Effect of Lymphangiogenesis in Transplant Arteriosclerosis](#)

References: Circulation