

Ctsk-2A-Cre

Nomenclature	C57BL/6Smoc- <i>Ctsk</i> ^{em1(2A-Cre-Wpre-pA)Smoc}
Cat. NO.	NM-KI-190019
Strain State	Repository Live

Gene Summary

Gene Symbol Ctsk	Synonyms	catK; Ms10q; MMS10-Q; AI323530
	NCBI ID	13038
	MGI ID	107823
	Ensembl ID	ENSMUSG00000028111
	Human Ortholog	CTSK

Model Description

The 2A-Cre-Wpre-polyA cassette is inserted before 3'UTR region of Ctsk gene.

Research Application: Cre recombinase tool

*Literature published using this strain should indicate: Ctsk-2A-Cre mice (Cat. NO. NM-KI-190019) were purchased from Shanghai Model Organisms Center, Inc..

Validation Data

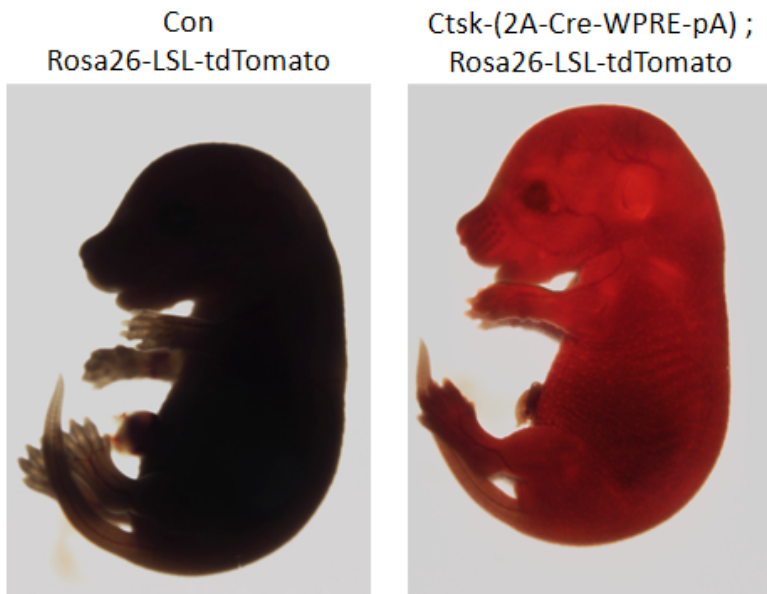


Fig.1 Tomato expression in E16.5 Ctsk-Cre/+; LSL-tdTomato/+ embryos.

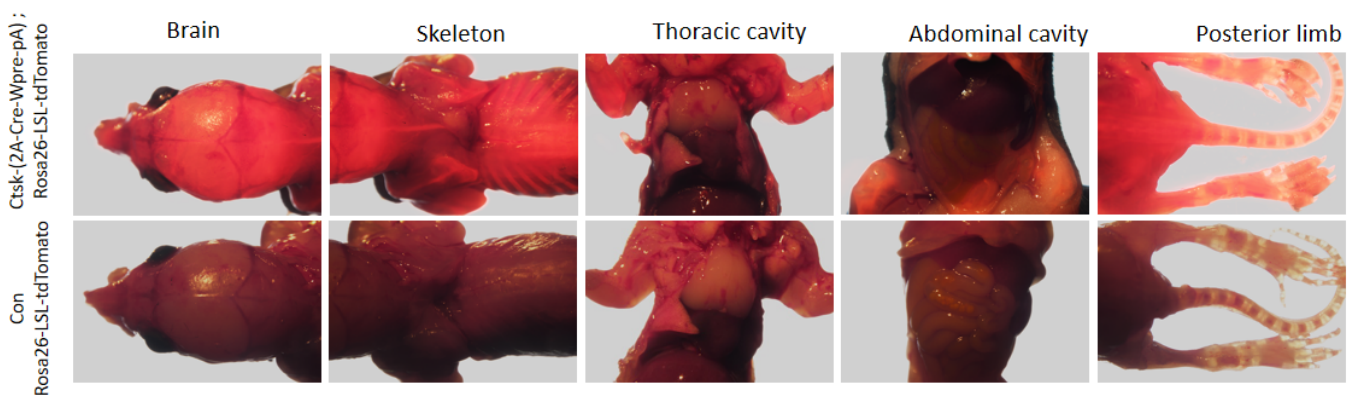


Fig.2 Cre-mediated recombination in brain, skin and skeleton of Ctsk-Cre/+; LSL-tdTomato/+ pups.

Publications

[Ubiquitin-Specific Protease 34 Inhibits Osteoclast Differentiation by Regulating NF-κB Signaling](#)

References: Journal of Bone and Mineral Research