

Krt14-CreERT2

Nomenclature	C57BL/6Smoc- <i>Krt14</i> ^{em2(CreERT2-Wpre-polyA)Smoc}
Cat. NO.	NM-KI-190024
Strain State	Repository Live

Gene Summary

Gene Symbol Krt14	Synonyms	K14; CK-14; Krt1-14; AI626930; Krt-1.14
	NCBI ID	16664
	MGI ID	96688
	Ensembl ID	ENSMUSG00000045545
	Human Ortholog	KRT14

Model Description

A CreERT2-Wpre-polyA expression cassette was knocked into initiation codon ATG site of the Krt14 gene.

Research Application: Cre recombinase tool

*Literature published using this strain should indicate: Krt14-CreERT2 mice (Cat. NO. NM-KI-190024) were purchased from Shanghai Model Organisms Center, Inc..

Validation Data

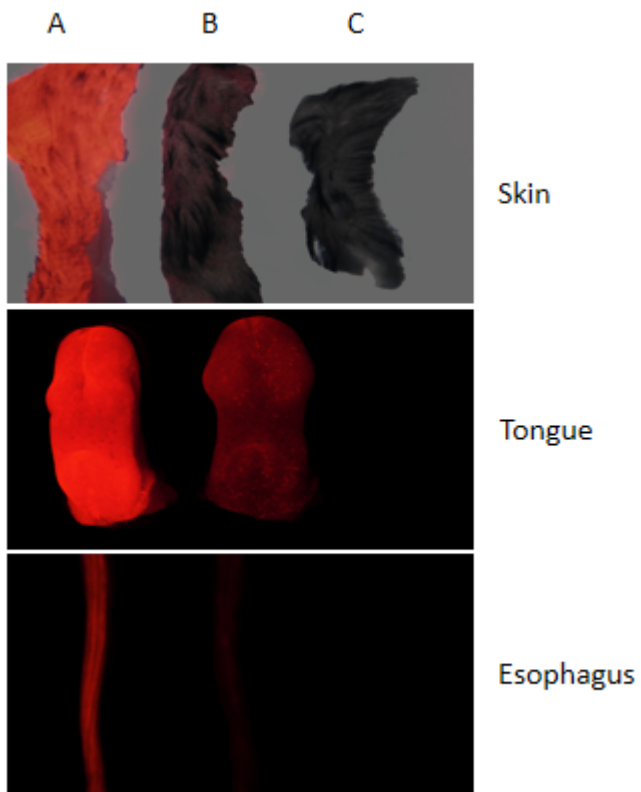


Fig1 CreERT2-mediated recombination in Skin, Tongue & Esophagus of Krt14 CreERT2^{+/-};R26 tdTomato^{+/-} mice.

A, Krt14-CreERT2^{+/-} ; Rosa26 tdTomato^{+/-} ; Tamoxifen

B, Krt14-CreERT2^{+/-}; Rosa26 tdTomato^{+/-}

C, Rosa26 tdTomato^{+/-}

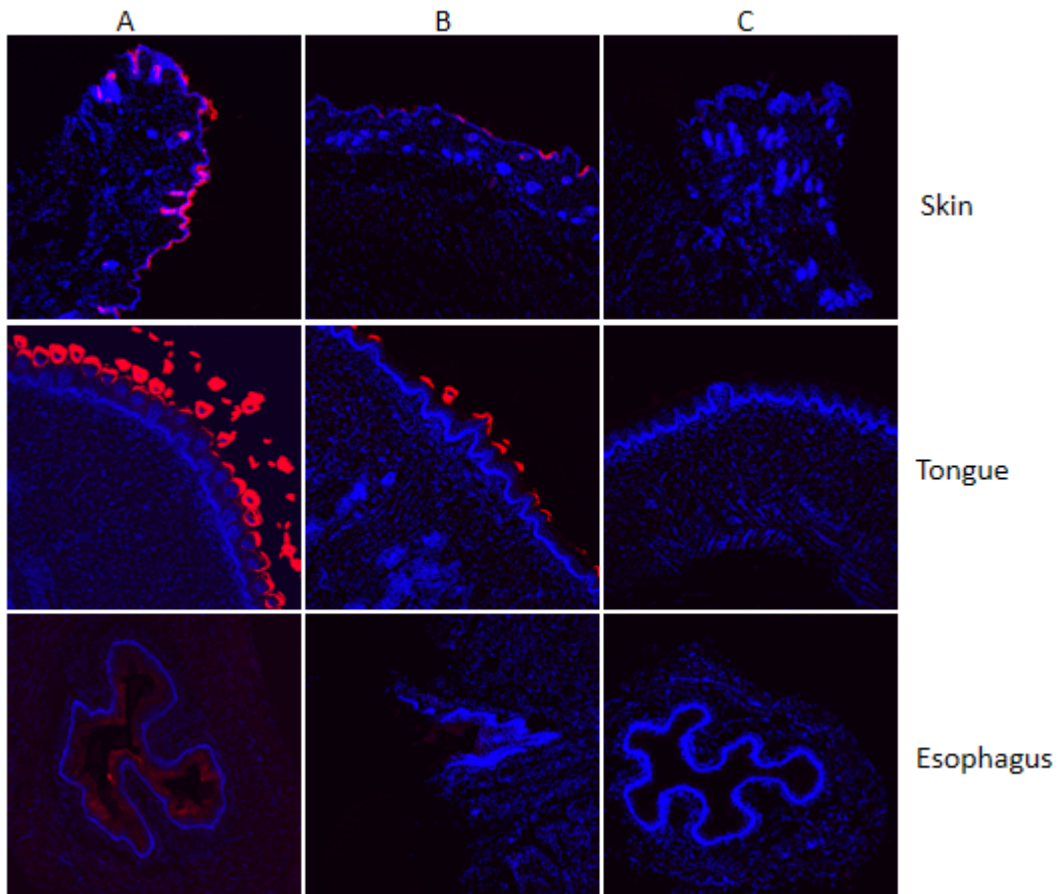


Fig2 Confocal images showing expression of tdTomato in Skin, Tongue & Esophagus of Krt14 CreERT2^{+/-};R26 tdTomato ^{+/-} mice.

A, Krt14-CreERT2^{+/-} ; Rosa26 tdTomato^{+/-} ; Tamoxifen

B, Krt14-CreERT2^{+/-}; Rosa26 tdTomato^{+/-}

C, Rosa26 tdTomato^{+/-}

Publications

[A novel lineage of osteoprogenitor cells with dual epithelial and mesenchymal properties govern maxillofacial bone homeostasis and regeneration after MSFL](#)

References: Cell Research