

Csf1r-IRES-Cre

Nomenclature	C57BL/6Smoc- <i>Csf1r</i> ^{em3(IRES-iCre)Smoc}
Cat. NO.	NM-KI-190026
Strain State	Repository Live

Gene Summary

Gene Symbol CSF1R	Synonyms	Fms; Fim2; CD115; Csfmr; Fim-2; CSF-1R; M-CSFR; M-CSF-R; AI323359
	NCBI ID	12978
	MGI ID	1339758
	Ensembl ID	ENSMUSG00000024621
	Human Ortholog	CSF1R

Model Description

A IRES-iCre expression cassette was knocked into the *Csf1r* gene stop codon site.

Research Application: Cre recombinase tool

*Literature published using this strain should indicate: *Csf1r*-IRES-Cre mice (Cat. NO. NM-KI-190026) were purchased from Shanghai Model Organisms Center, Inc..

Validation Data

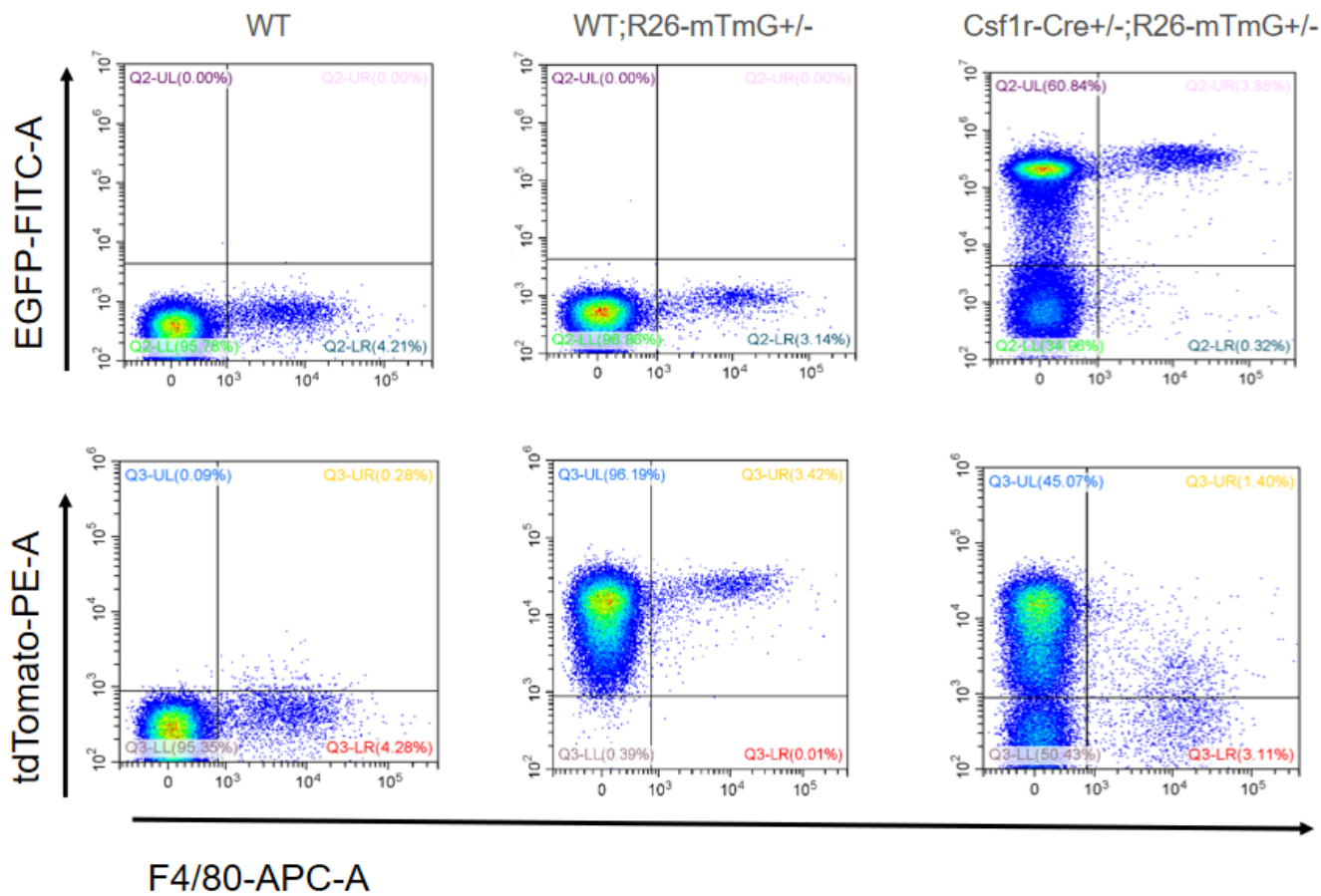


Fig1 Csf1r mTmG reporter conversion occurs in macrophages.

The presence of green (GFP-positive) cells indicates expression of Cre and conversion of the mTmG reporter in F4/80 positive macrophages of Csf1r-Cre+/mTmG+ mice.