

Ly6a-2A-Cre

Nomenclature	C57BL/6Smoc- <i>Ly6a</i> ^{em1(2A-iCre)Smoc}
Cat. NO.	NM-KI-190028
Strain State	Repository Live

Gene Summary

Gene Symbol Ly6a	Synonyms	TAP; Sca1; Sca-1; Ly-6A.2; Ly-6A/E; Ly-6E.1
	NCBI ID	110454
	MGI ID	107527
	Ensembl ID	ENSMUSG00000075602
	Human Ortholog	LY6A

Model Description

A 2A-iCre expression cassette was knocked into the Ly6a gene stop codon site.

Research Application: Cre recombinase tool

*Literature published using this strain should indicate: Ly6a-2A-Cre mice (Cat. NO. NM-KI-190028) were purchased from Shanghai Model Organisms Center, Inc..

Validation Data

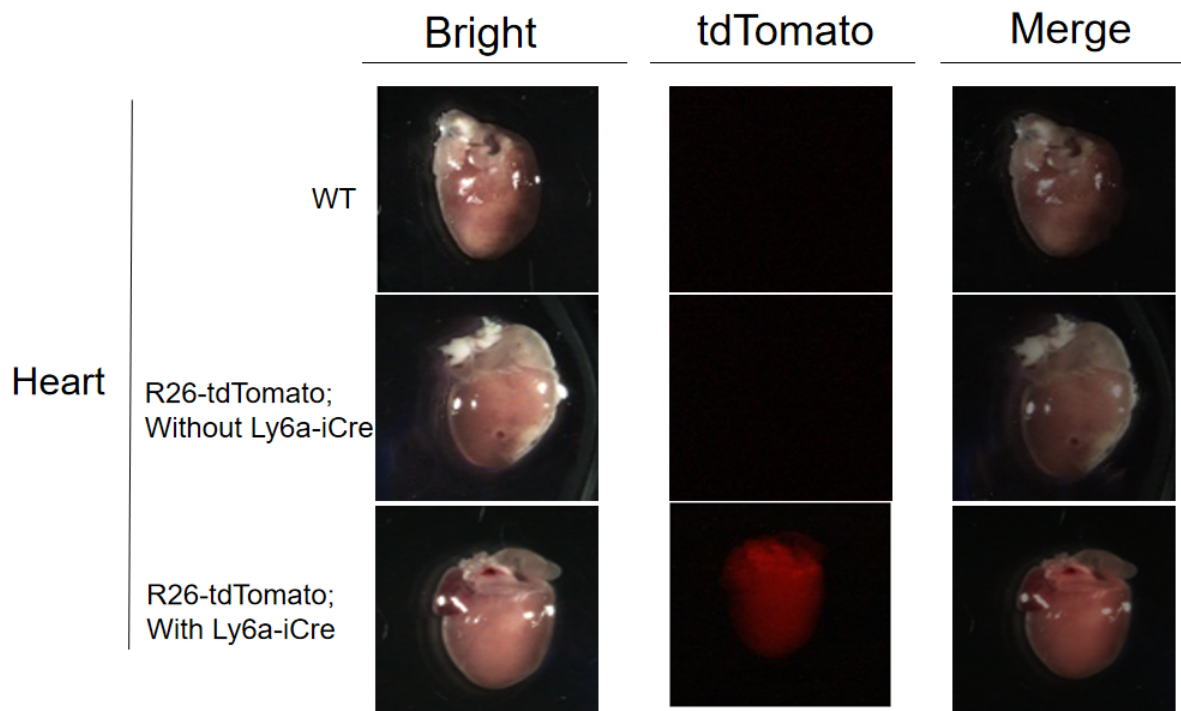


Fig1. Expression Pattern of Tomato in Ly6a-iCre^{+/-} ; R26- tdTomato^{+/-} mice.

Cre mediated recombination in heart of Ly6a-iCre ^{+/-} ; R26-tdTomato ^{+/-} mice.

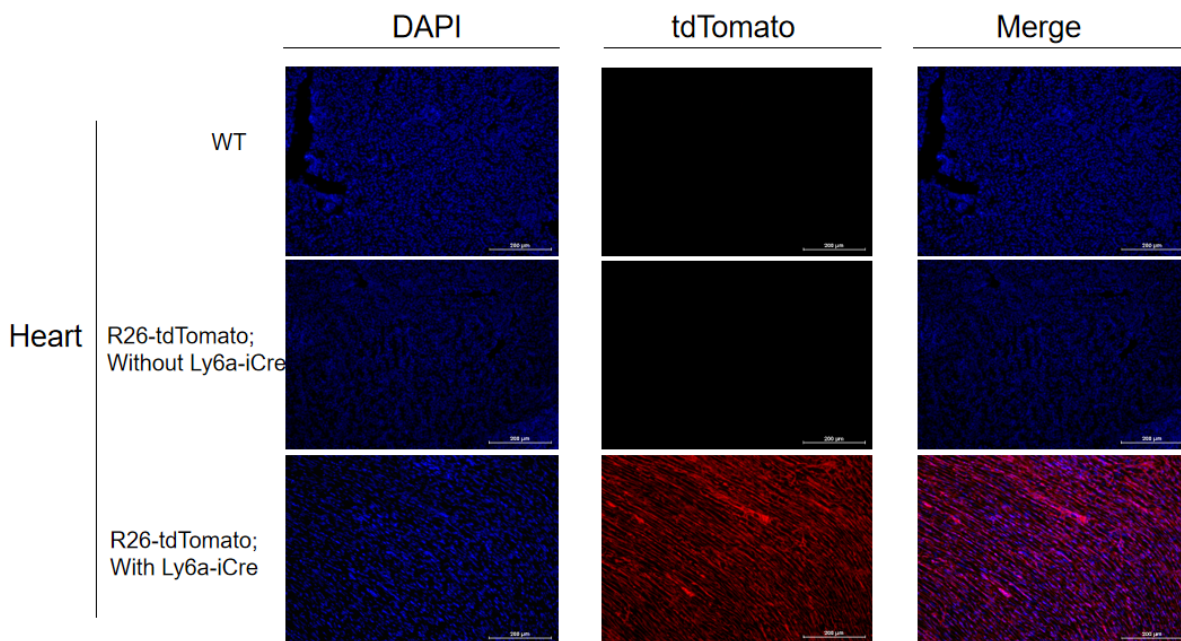


Fig2. Validation of tdTomato expression by fluorescence assay.

The heart of Ly6a-iCre mice were detected by fluorescence.

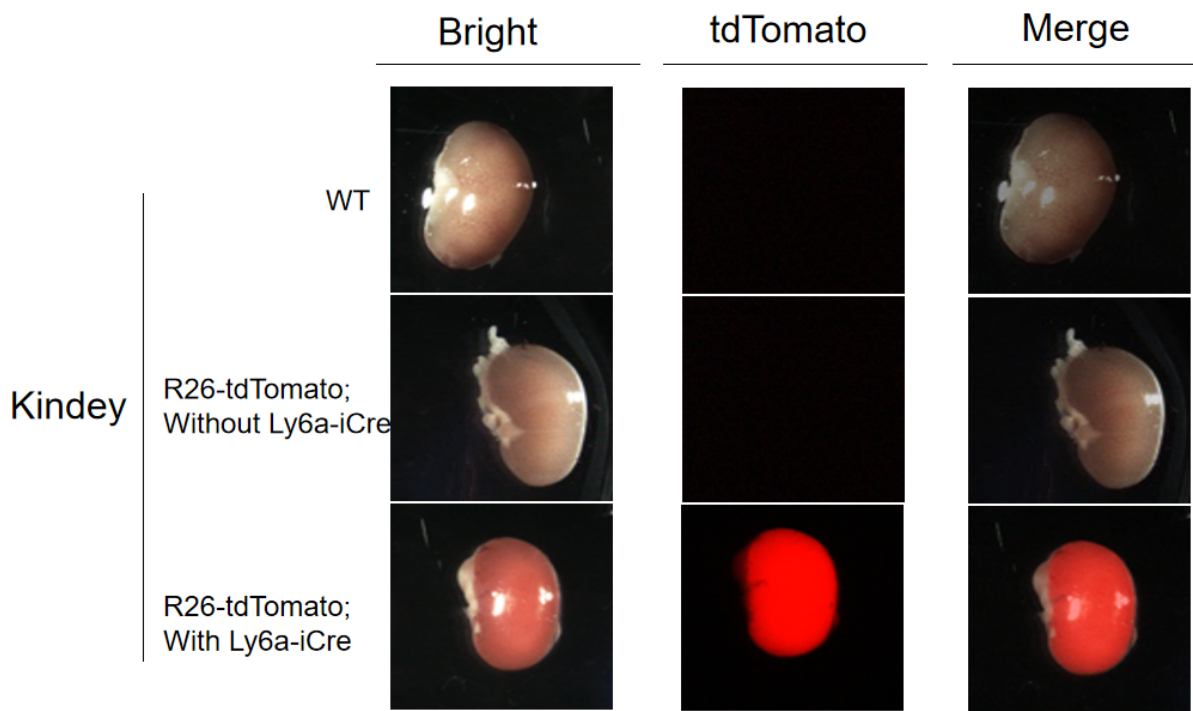


Fig3. Expression Pattern of Tomato in Ly6a-iCre^{+/-} ; R26-tdTomato^{+/-} mice.

Cre mediated recombination in kindey of Ly6a-iCre^{+/-} ; R26-tdTomato ^{+/-} mice.

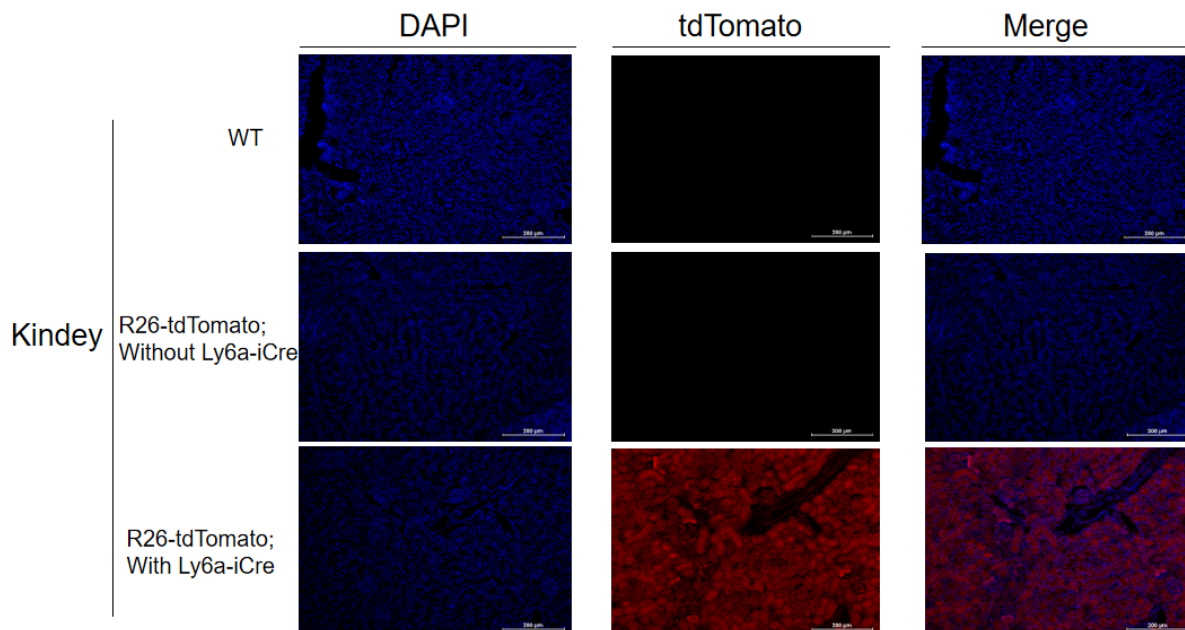


Fig4. Validation of tdTomato expression by fluorescence assay.

The kindey of Ly6a-iCre mice were detected by fluorescence.