

# Foxp3-IRES-DTRGFP

<b>Nomenclature</b>	C57BL/6Smoc- <i>Foxp3</i> <sup>em3(IRES-DTRGFP)Smoc</sup>
<b>Cat. NO.</b>	NM-KI-190046
<b>Strain State</b>	Repository Live

## Gene Summary

<b>Gene Symbol</b> <b>Foxp3</b>	<b>Synonyms</b>	sf; JM2; scurfin
	<b>NCBI ID</b>	<a href="#">20371</a>
	<b>MGI ID</b>	<a href="#">1891436</a>
	<b>Ensembl ID</b>	<a href="#">ENSMUSG00000039521</a>
	<b>Human Ortholog</b>	FOXP3

## Model Description

A IRES-DTRGFP expression cassette was knocked into the Foxp3 gene stop codon site.

**Research Application:** DTR mouse

\*Literature published using this strain should indicate: Foxp3-IRES-DTRGFP mice (Cat. NO. NM-KI-190046) were purchased from Shanghai Model Organisms Center, Inc..

## Validation Data

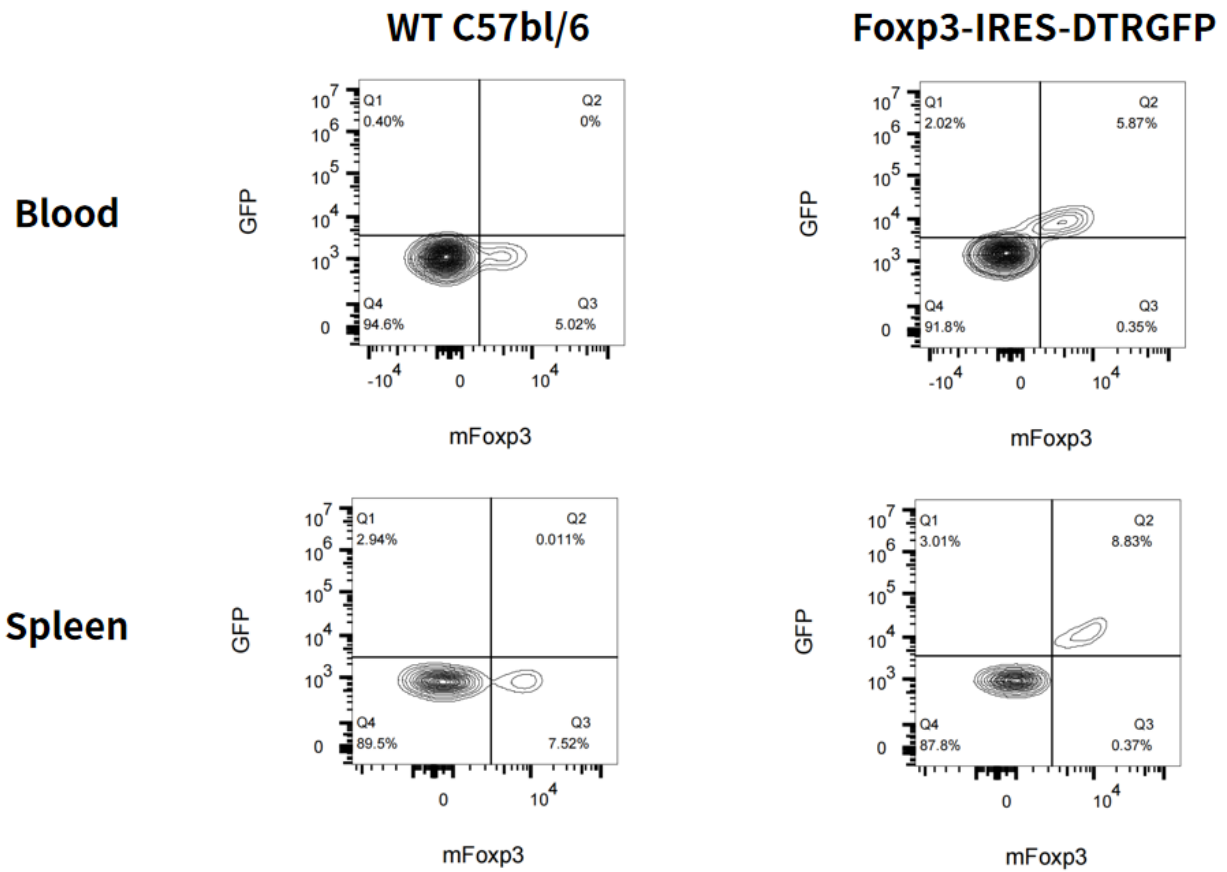


Fig1. Expression of GFP on Tregs in Blood and Spleen in Foxp3-IRES-DTRGFP KI mice.

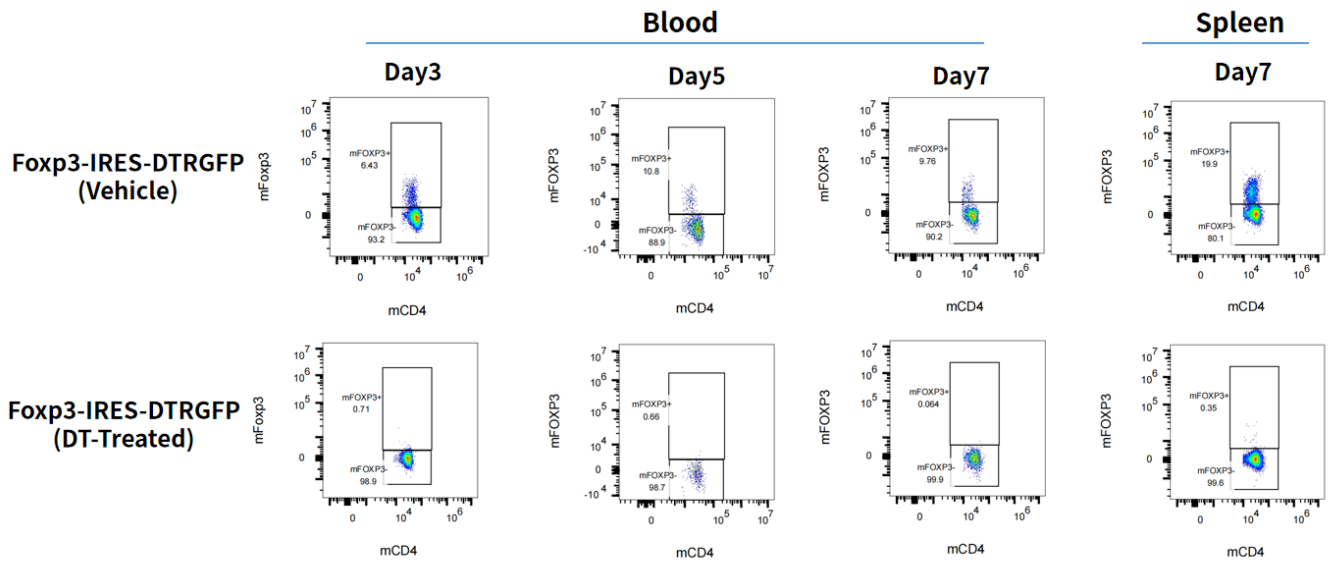


Fig2. Percentages of Tregs in the peripheral blood and spleen of Foxp3-IRES-DTRGFP KI mice treated with diphtheria toxin (DT).

## Peripheral blood FACS analysis

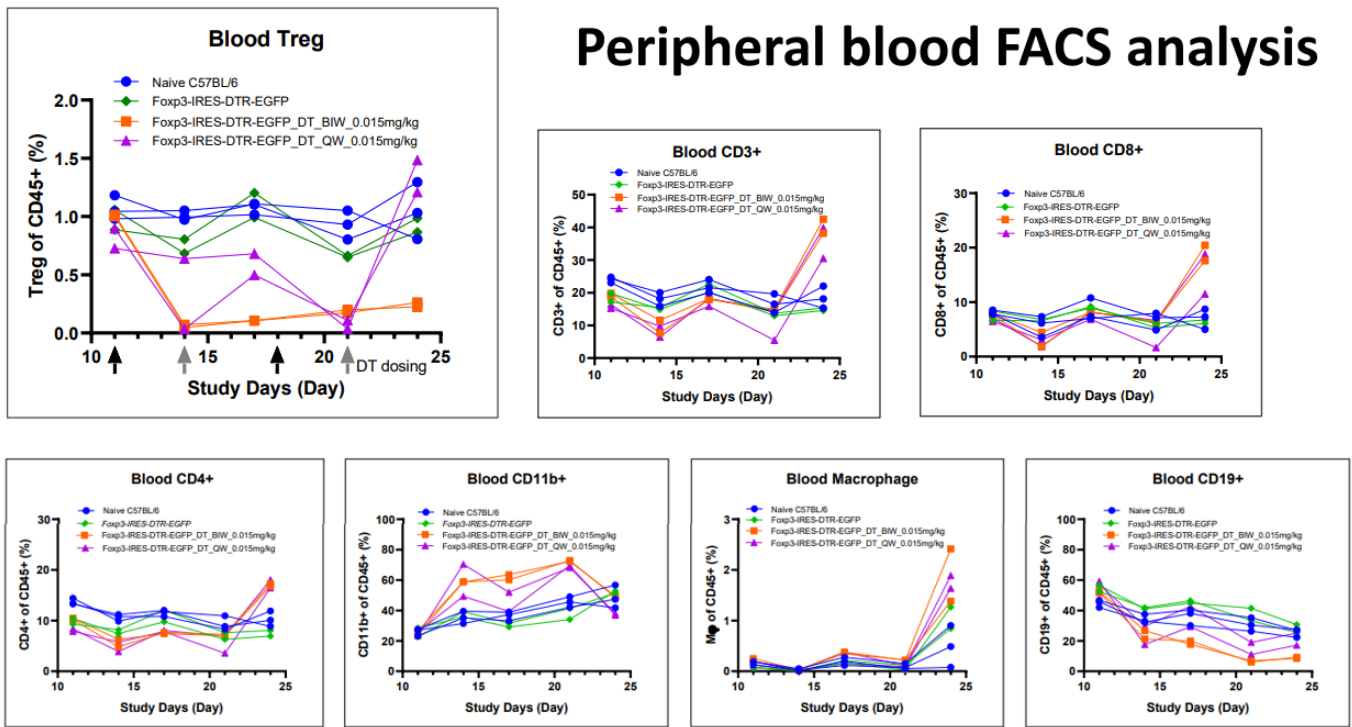


Fig3. The percent of Treg+ and other immune cells in peripheral blood of MC38 tumor-bearing Foxp3-IRES-DTRGFP mice is detected by FACS. (In collaboration with CrownBio)

## Spleen & Tumor FACS analysis

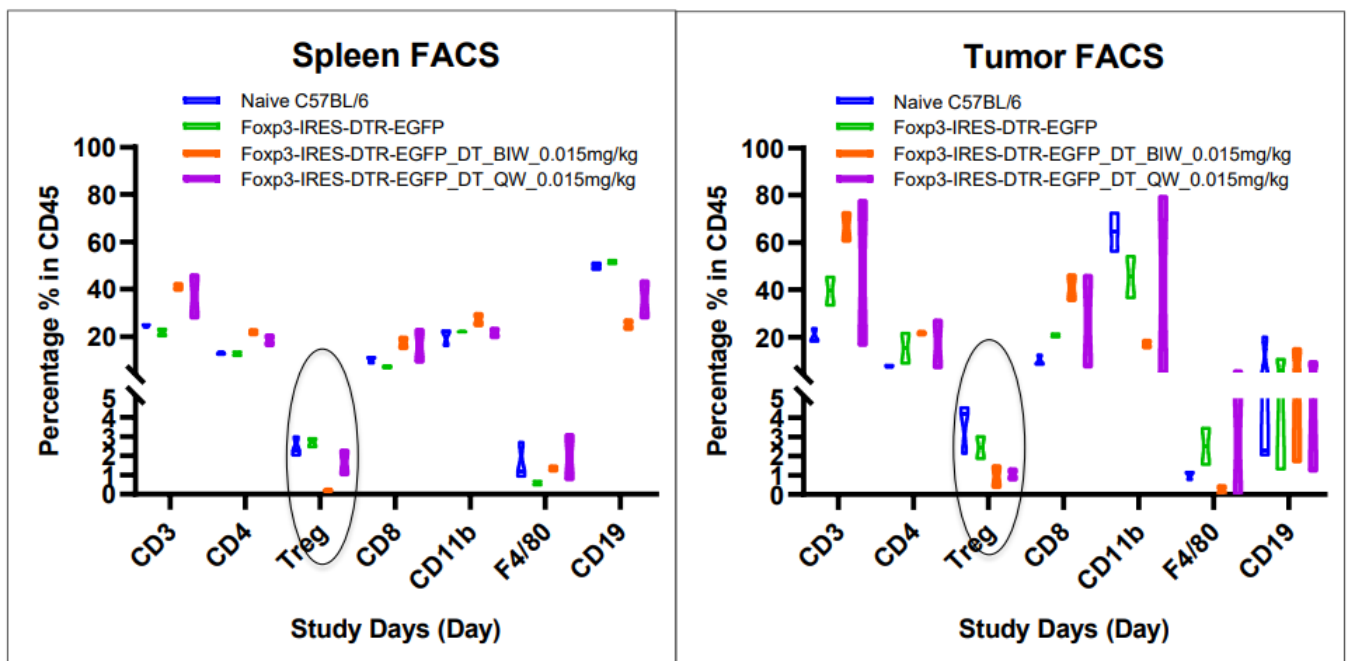


Fig4. The percent of Treg+ and other immune cells in spleen and tumor of MC38 tumor-bearing Foxp3-IRES-DTRGFP mice is detected by FACS. (In collaboration with CrownBio)

## MC38 Tumor Growth Curve

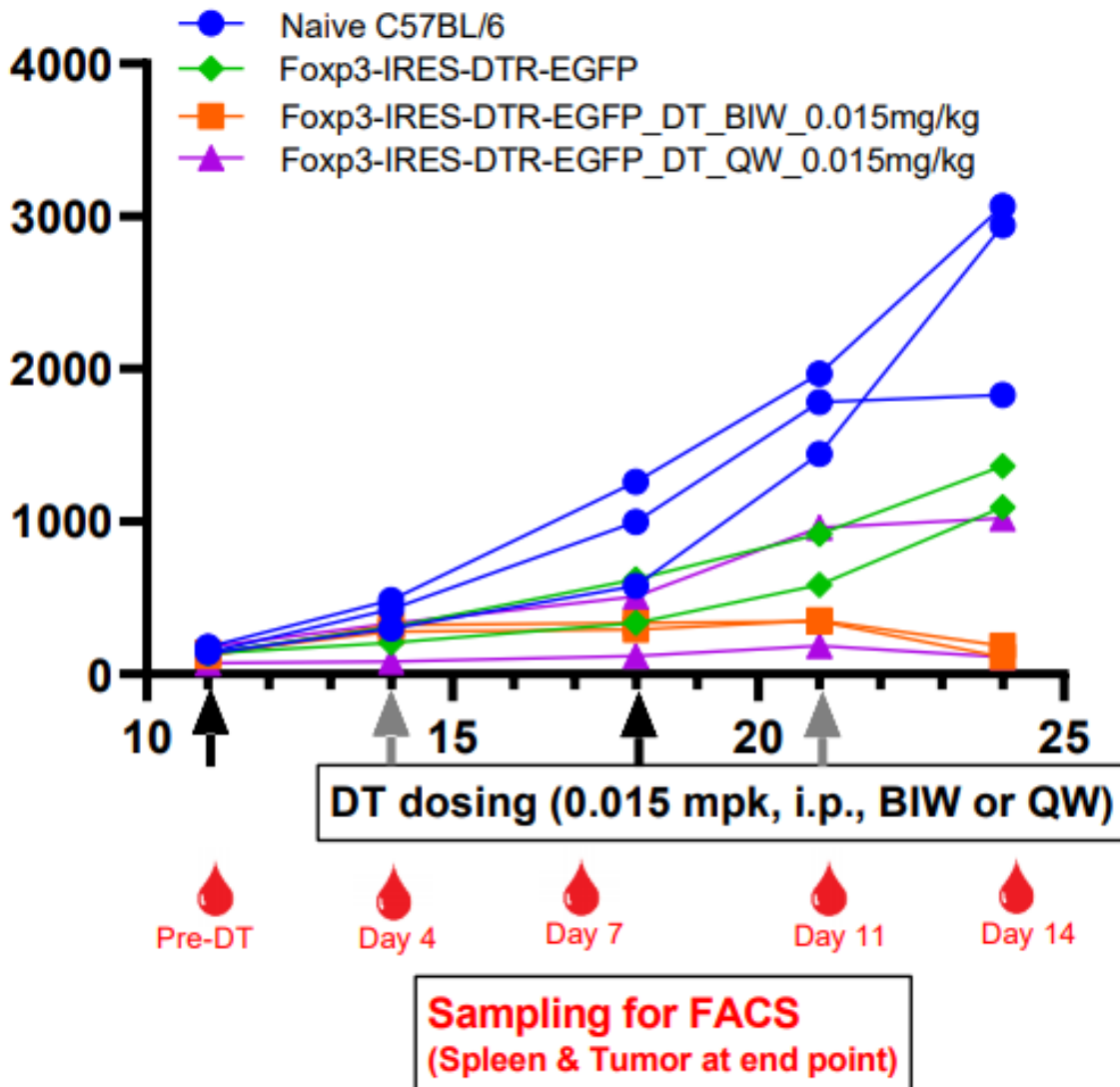


Fig5. The growth of MC38 tumors in Foxp3-IRES-DTRGFP mice and C57BL/6 mice. (In collaboration with CrownBio)