

# Scgb3a2-IRES-Cre

<b>Nomenclature</b>	C57BL/6Smoc- <i>Scgb3a2</i> <sup>em1(IRES-Cre-polyA)Smoc</sup>
<b>Cat. NO.</b>	NM-KI-210127
<b>Strain State</b>	Embryo cryopreservation

## Gene Summary

<b>Gene Symbol</b> Scgb3a2	<b>Synonyms</b>	Pnsp1; UGRP1; LuLeu1; Utgrp1
	<b>NCBI ID</b>	<a href="#">117158</a>
	<b>MGI ID</b>	<a href="#">2153470</a>
	<b>Ensembl ID</b>	<a href="#">ENSMUSG00000038791</a>
	<b>Human Ortholog</b>	SCGB3A2

## Model Description

IRES-Cre-polyA expression cassette was knocked into the *Scgb3a2* gene.

**Research Application:** Secretoglobin (SCGB) 3A2 is a member of the SCGB gene superfamily of cytokine-like secretory proteins of small molecular weight. SCGB proteins mainly expressed in airway epithelial cells.

\*Literature published using this strain should indicate: *Scgb3a2*-IRES-Cre mice (Cat. NO. NM-KI-210127) were purchased from Shanghai Model Organisms Center, Inc..

## Validation Data

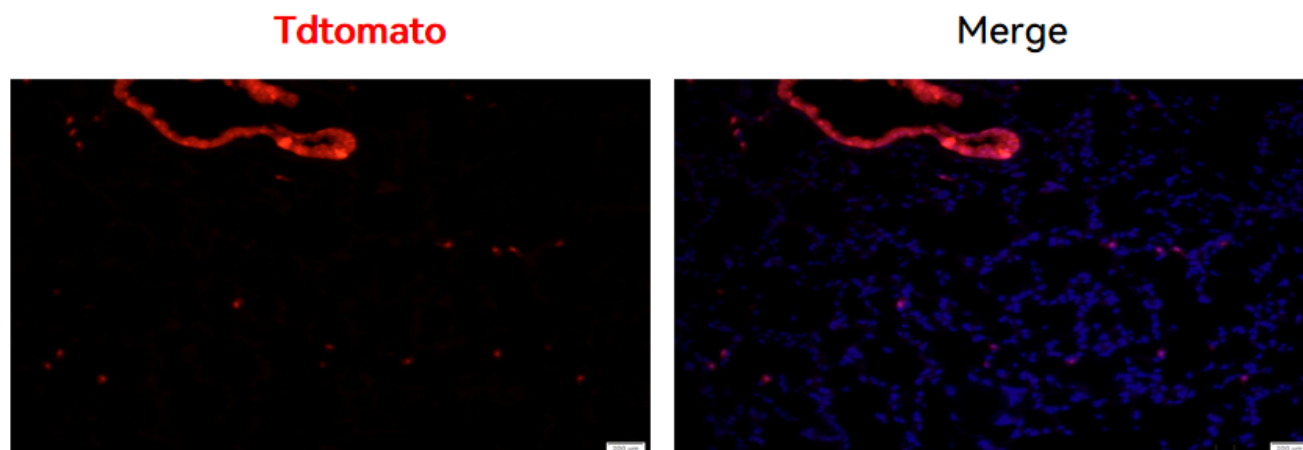


Fig. 1 Cre-mediated recombination in the lung of  $Scgb3a2^{Cre/+}; Rosa26^{tdTomato/+}$  mouse. TdTomato(red) expression can be detected in the epithelial cells of  $Scgb3a2^{Cre/+}; Rosa26^{tdTomato/+}$  mouse.

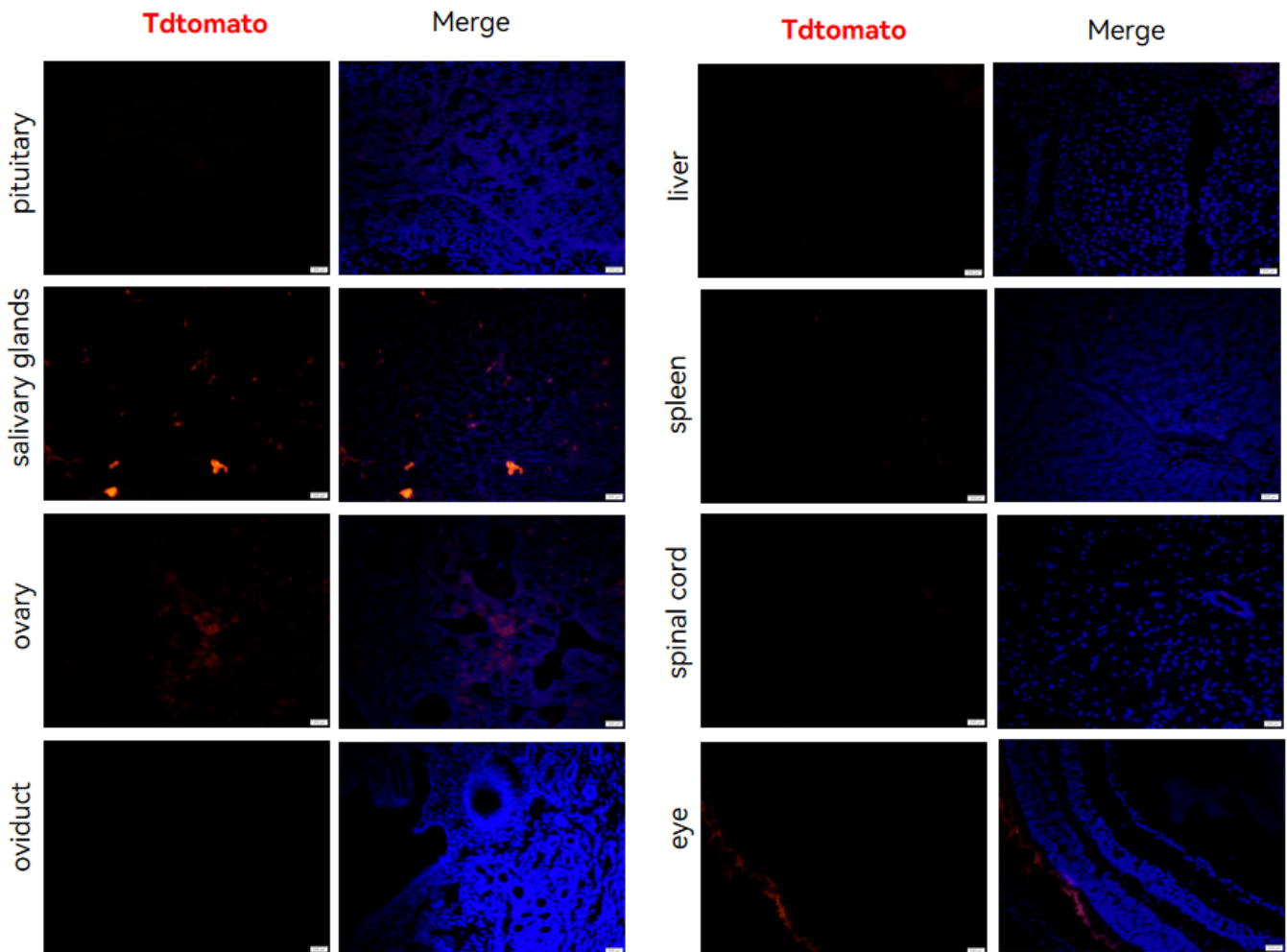


Fig. 2 Detection of tdTomato(red) in various tissues of  $Scgb3a2^{Cre/+}; Rosa26^{tdTomato/+}$  mice. Tdtomato was expressed in the airway epithelium cells of an adult female mouse. TdTomato can also be detected in individual cells of salivary glands, ovary, spleen and spinal cord. TdTomato can not be detected in the pituitary, oviduct, liver and eyes. (For more detailed information please contact our technical advisor.)