

Rag2/IL2rg-KO(BALB/c)

Nomenclature	BALB/cAnSmoc- <i>Rag2</i> ^{em1} <i>IL2rg</i> ^{em1Smoc}
Cat. NO.	NM-KO-210231
Strain State	Repository Live

Gene Summary

Gene Symbol IL2RG	Synonyms	gc; p64; [g]c; CD132; gamma(c)
	NCBI ID	16186
	MGI ID	96551
	Ensembl ID	ENSMUSG00000031304
	Human Ortholog	IL2RG
Gene Symbol Rag2	Synonyms	Rag-2
	NCBI ID	19374
	MGI ID	97849
	Ensembl ID	ENSMUSG00000032864
	Human Ortholog	RAG2

Model Description

Exon 3 of Rag2 and exon 2 of IL2rg gene was deleted to generate Rag2 and IL2rg knockout mice.

Research Application: inmmeue associated

*Literature published using this strain should indicate: Rag2/IL2rg-KO(BALB/c) mice (Cat. NO. NM-KO-210231) were purchased from Shanghai Model Organisms Center, Inc..

Validation Data

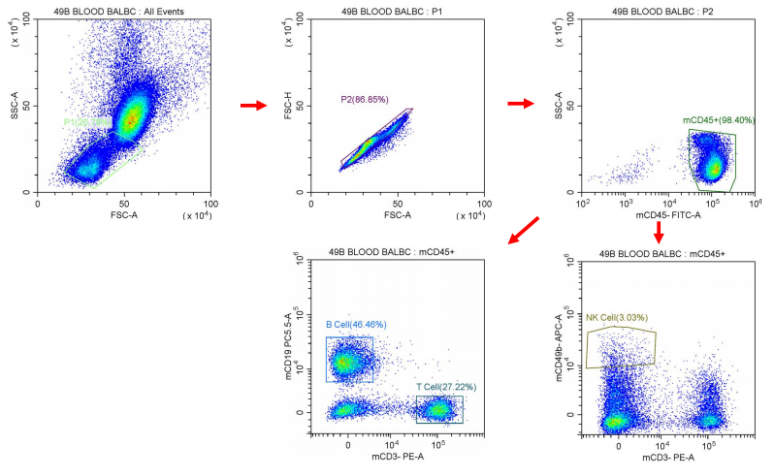
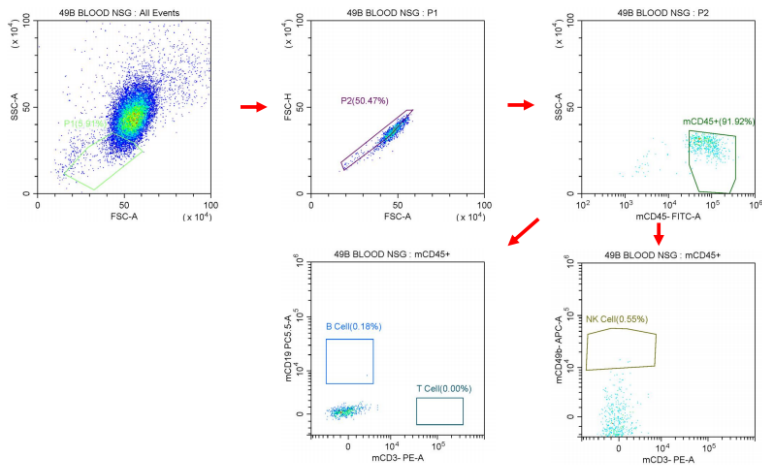
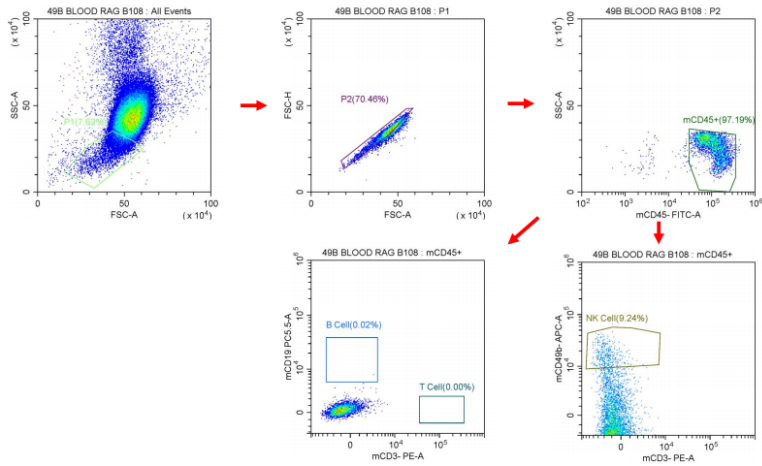
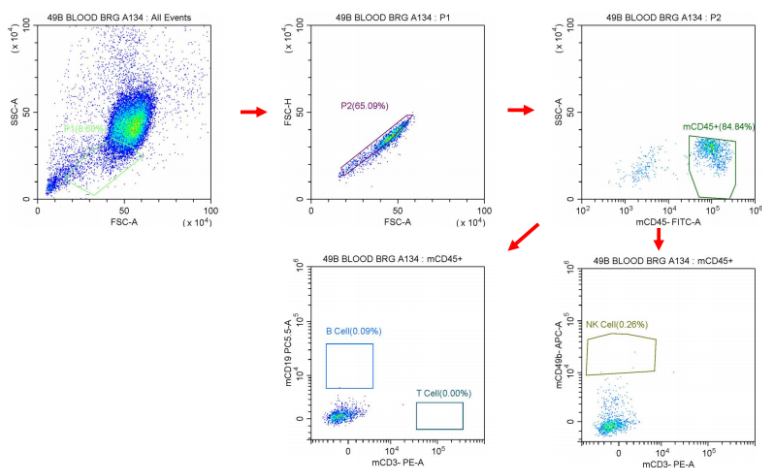
Balb/c-WT

NSG-WT

Rag2-KO

Rag2/IL2rg-KO(BALB/c)


Fig1. Detection of T cells, B cells and NK cells in the blood of Rag2/IL2rg-KO(BALB/c) mice.

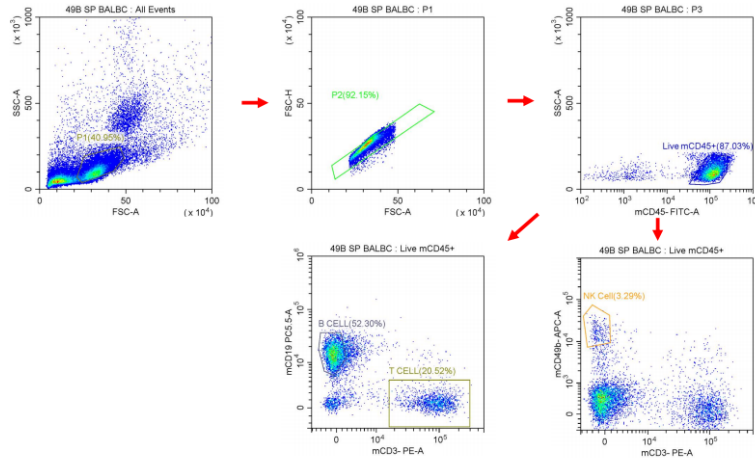
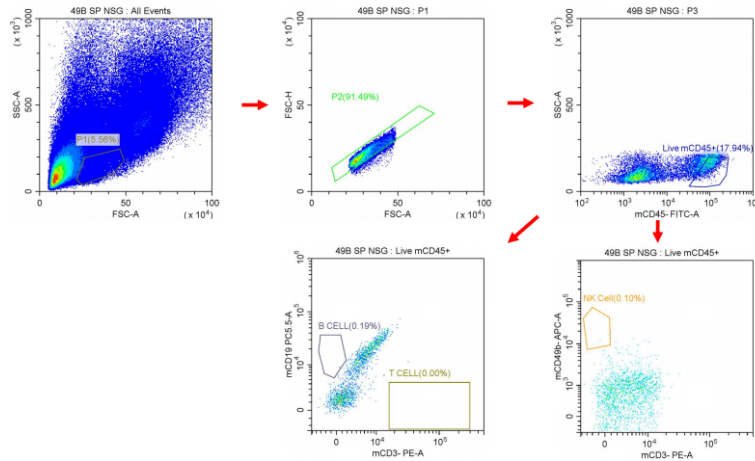
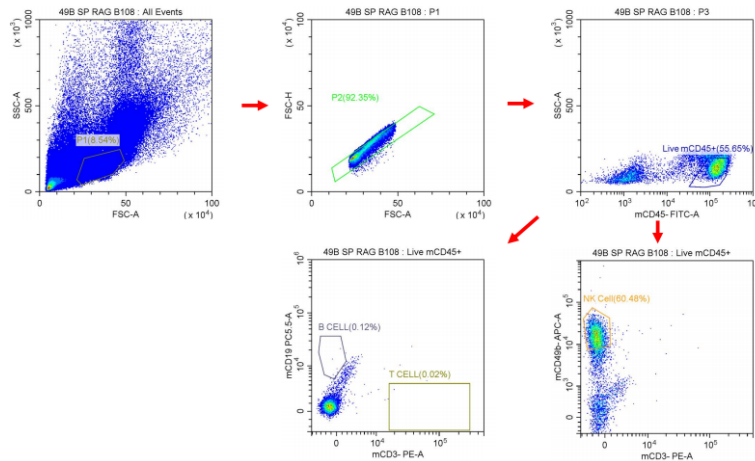
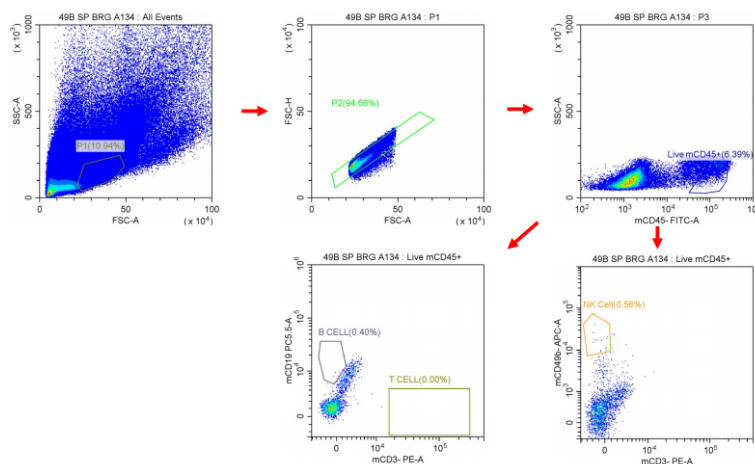
Balb/c-WT

NSG-WT

Rag2-KO

Rag2/IL2rg-KO(BALB/c)


Fig2. Detection of T cells, B cells and NK cells in the spleen of Rag2/IL2rg-KO(BALB/c) mice.
