

R26-hCD46-IRES-tdTomato

Nomenclature	C57BL/6Smoc- <i>Gt(ROSA)26Sor</i> ^{em1(SA-hCD46-IRES-tdTomato-polyA)Smoc}
Cat. NO.	NM-KI-190087
Strain State	Repository Live

Gene Summary

Gene Symbol Gt(ROSA)26Sor	Synonyms	R26, ROSA26, AV258896, Gtrg eo26, Gtrosa26, Thumpd3as1
	NCBI ID	14910
	MGI ID	104735
	Ensembl ID	ENSMUSG00000086429

Model Description

These mice harbor a SA-human CD46-IRES-tdTomato-polyA cassette in the Rosa26 locus generated by homologous recombination.

Research Application: Immune-related

*Literature published using this strain should indicate: R26-hCD46-IRES-tdTomato mice (Cat. NO. NM-KI-190087) were purchased from Shanghai Model Organisms Center, Inc..

Validation Data

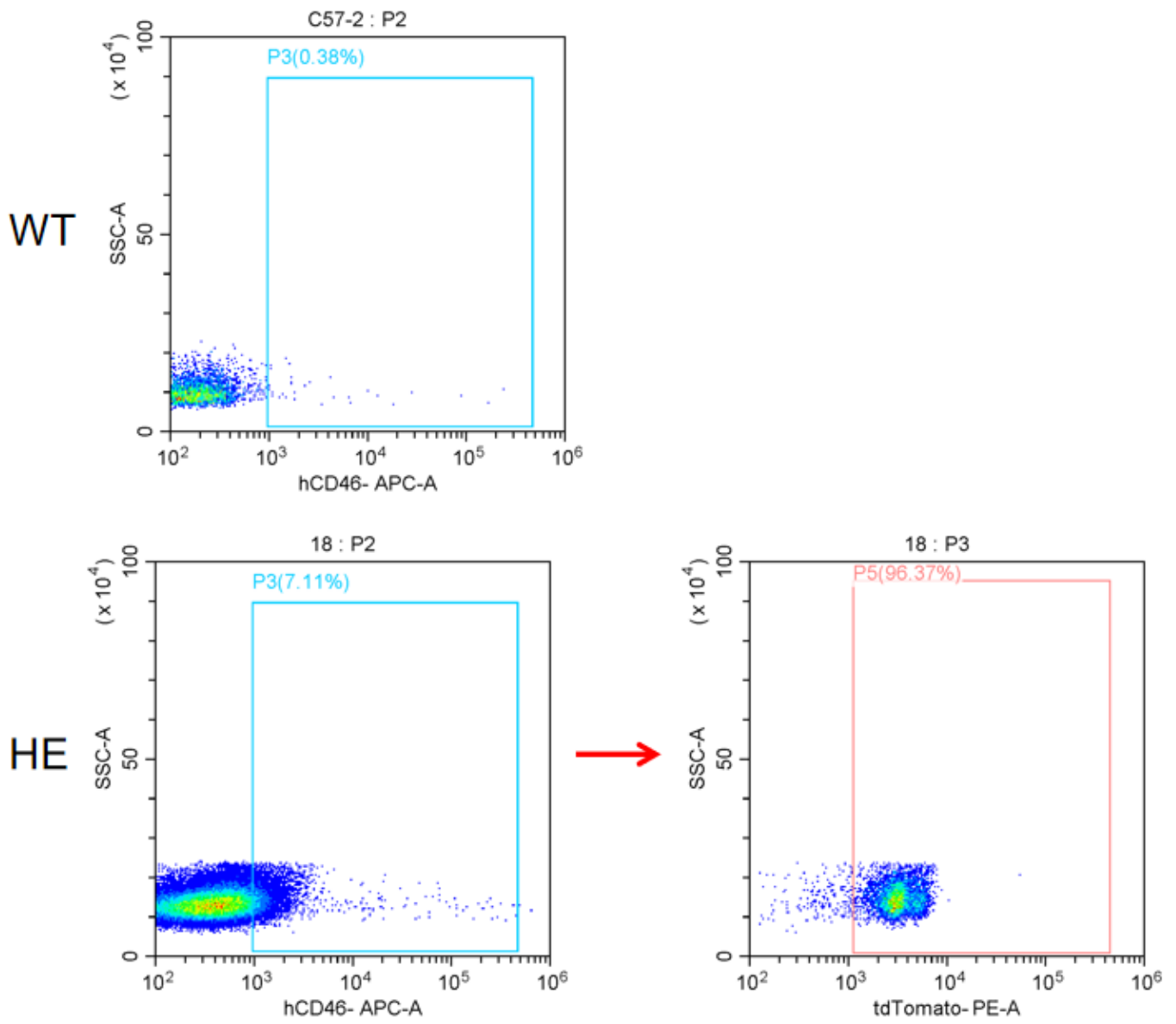


Fig1. Analysis of human CD46 and tdTomato expression in PBMC by FACS . The heterozygous KI mouse expresses human CD46 and tdTomato in PBMC.