

hPD-L2

Nomenclature	C57BL/6Smoc- <i>Pdcd1lg2</i> ^{em1(hPDCD1LG2)Smoc}
Cat. NO.	NM-HU-190050
Strain State	Embryo cryopreservation

Gene Summary

Gene Symbol Pdcd1lg2	Synonyms	Btdc; B7-DC; PD-L2; F730015O22Rik
	NCBI ID	58205
	MGI ID	1930125
	Ensembl ID	ENSMUSG00000016498
	Human Ortholog	PDCD1LG2

Model Description

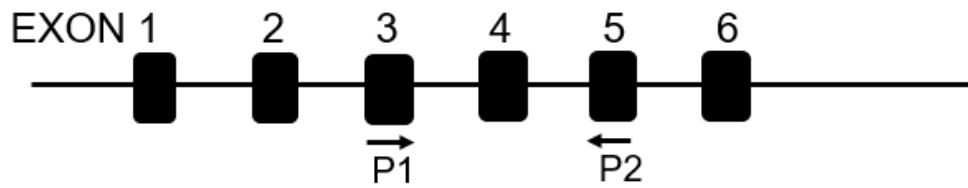
将小鼠*Pdcd1lg2*基因全部或者部分替换为人源PDCD1LG2，从而表达人或人鼠嵌合PDCD1LG2蛋白，取代小鼠内源*Pdcd1lg2*蛋白的表达 hPD-L2.

Research Application: Immunotherapy, cancer research, drug screening

*Literature published using this strain should indicate: hPD-L2 mice (Cat. NO. NM-HU-190050) were purchased from Shanghai Model Organisms Center, Inc..

Validation Data

Wild type allele



Targeted allele

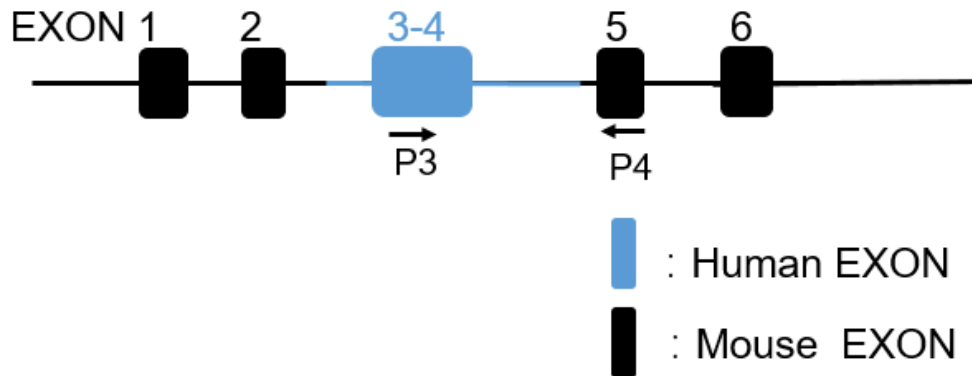


Fig1. Schematic representation of gene targeting at the Pd-L2 locus.

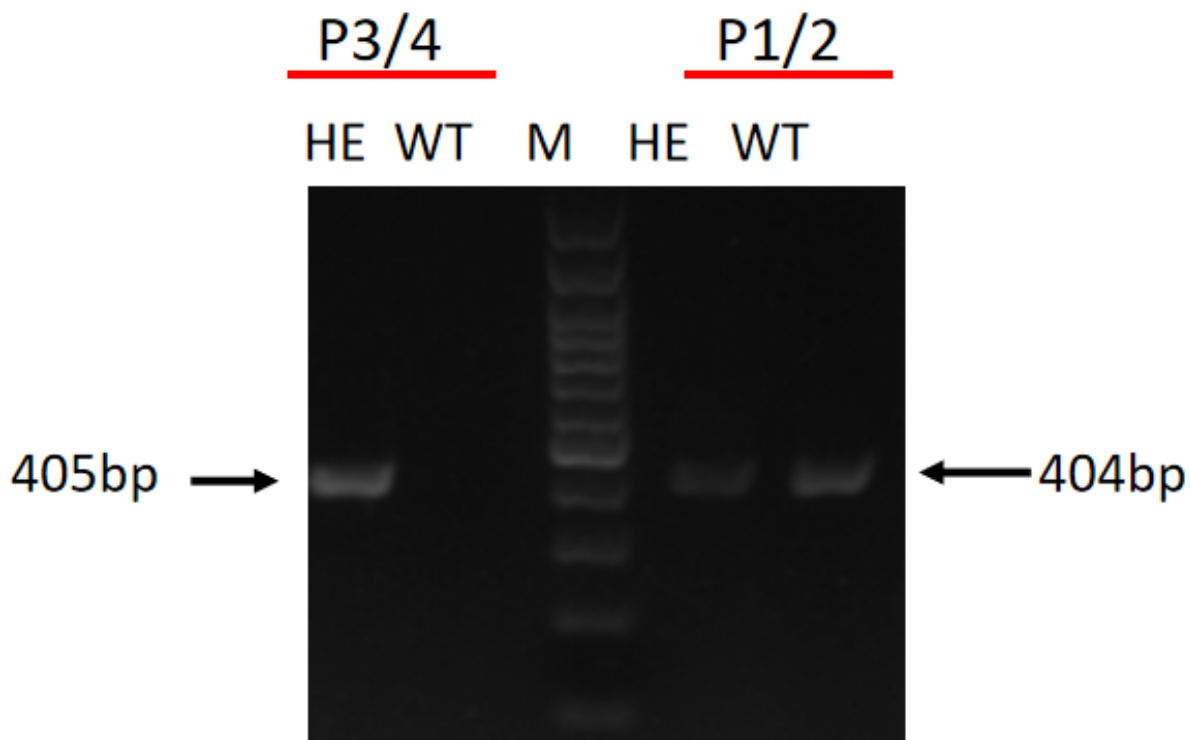


Fig2. Genotyping of humanized PD-L2 mice by RT-PCR.

Primer P1/2

Wild type = 404 bp

Primer P3/4

Mutant type = 405 bp

M:100bp Plus DNA ladder from Transgen (BM311)

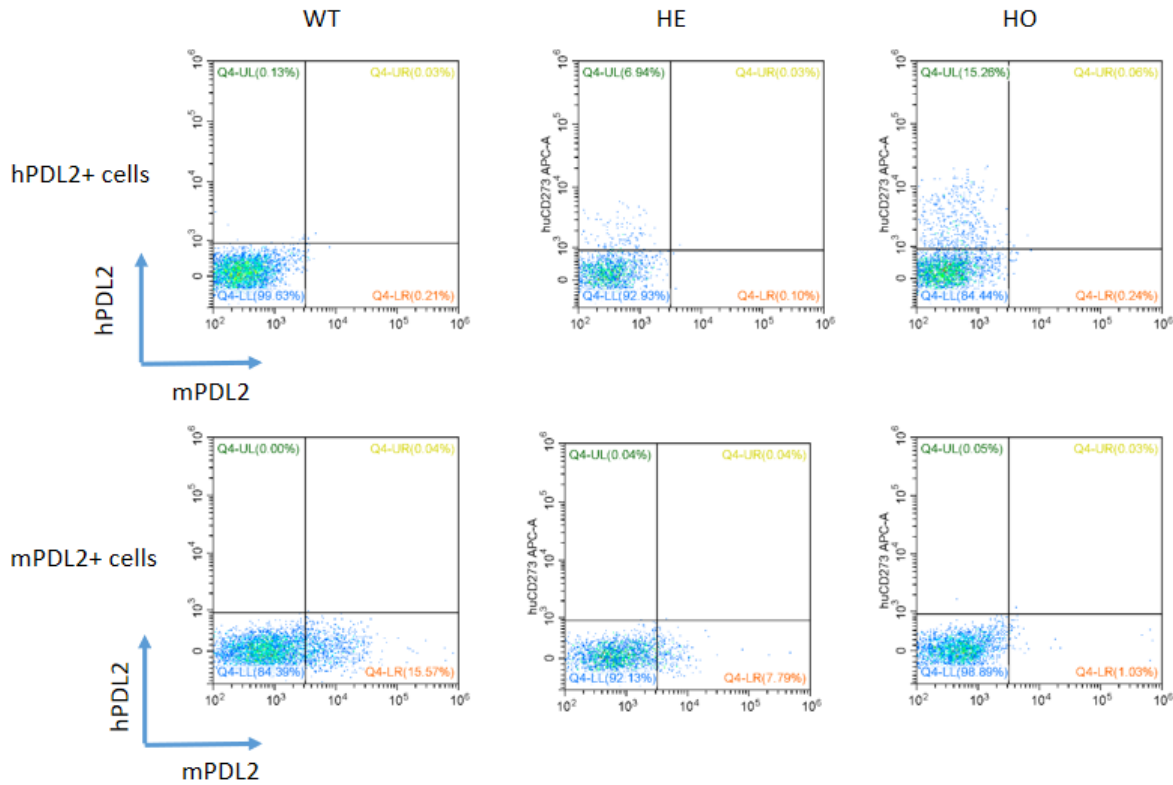


Fig 3. Splenocytes from humanized PD-L2 mice were analyzed by flow cytometry after activation.

hPD-L2+ (but not mPD-L2+) cells were detectable in the homozygous hPD-L2 mice, while hPD-L2+ and mPD-L2+ cells were both detectable in heterozygous humanized PD-L2 mice.