

# R26-CAG-EGFP(3)

<b>Nomenclature</b>	C57BL/6Smoc- <i>Gt(ROSA)26Sor</i> <sup>em2(CAG-EGFP-WPRE-polyA)Smoc</sup>
<b>Cat. NO.</b>	NM-KI-190090
<b>Strain State</b>	Repository Live

## Gene Summary

<b>Gene Symbol</b> <b>Gt(ROSA)26Sor</b>	<b>Synonyms</b>	R26, ROSA26, AV258896, Gtrg eo26, Gtrosa26, Thumpd3as1
	<b>NCBI ID</b>	<a href="#">14910</a>
	<b>MGI ID</b>	<a href="#">104735</a>
	<b>Ensembl ID</b>	<a href="#">ENSMUSG00000086429</a>

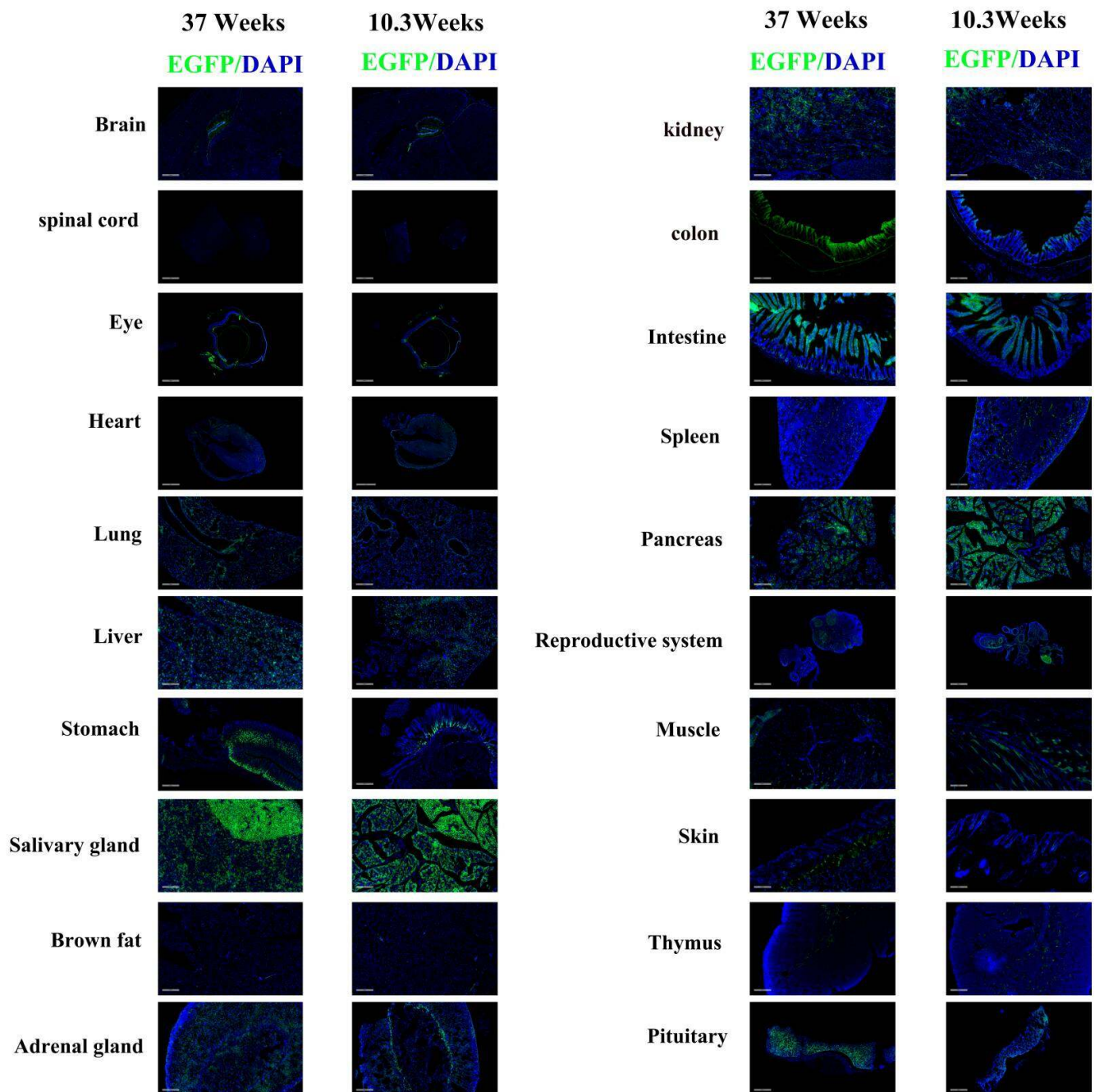
## Model Description

These mice harbor a CAG-EGFP-WPRE-polyA cassette in the Rosa26 locus.<sup>2</sup> generated by homologous recombination. While R26-CAG-EGFP(Stock No.NM-KI-190088) and R26-CAG-EGFP(2)(Stock No.NM-KI-190089) function similarly to R26-CAG-EGFP(3) mice,for more detailed information please contact our technical advisor.

**Research Application:** Reporter mice,EGFP

\*Literature published using this strain should indicate: R26-CAG-EGFP(3) mice (Cat. NO. NM-KI-190090) were purchased from Shanghai Model Organisms Center, Inc..

## Validation Data



**Fig 1. Detection of EGFP (Green) in various tissues of R26-CAG-EGFP(3) mice.** Expression tissues include: brain, eyes, heart, lungs, liver, stomach, salivary glands, adrenal glands, kidneys, colon, small intestine, spleen, pancreas, uterus and ovaries, skin, thymus, pituitary gland. A few cells expressed in spinal cord and brown fat. (37-week old and 10.3-week old, female) (For more detailed information please contact our technical advisor.)

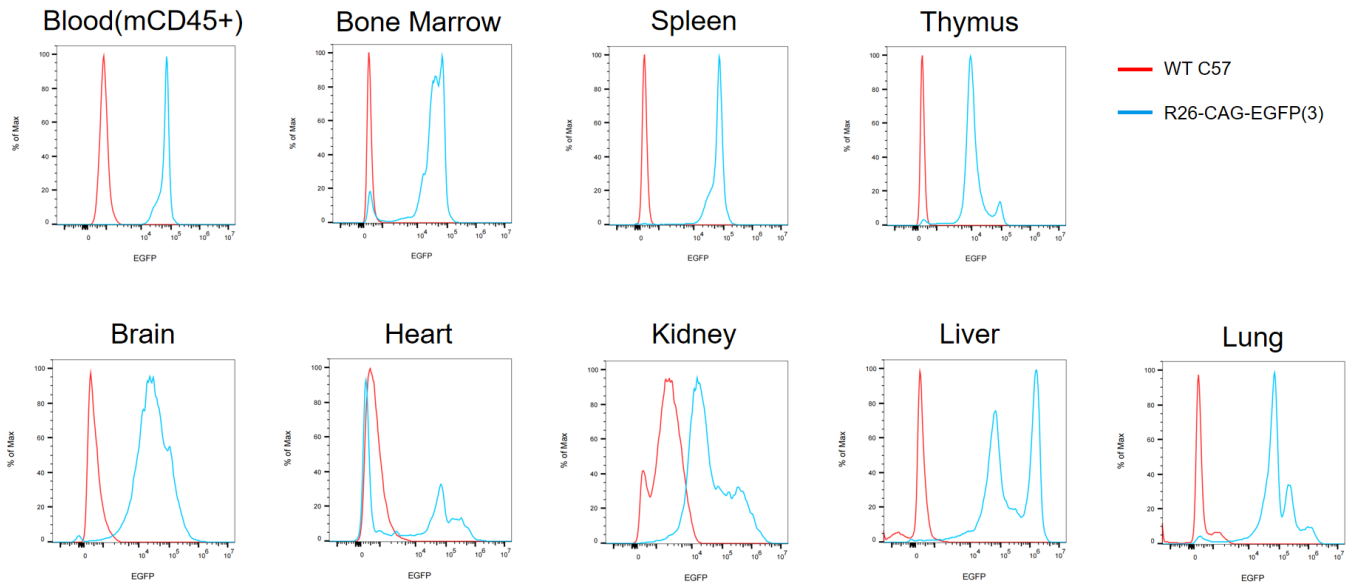


Fig2. Comparison of EGFP expression in live CD45 blood cells and live cells isolated from various organs.

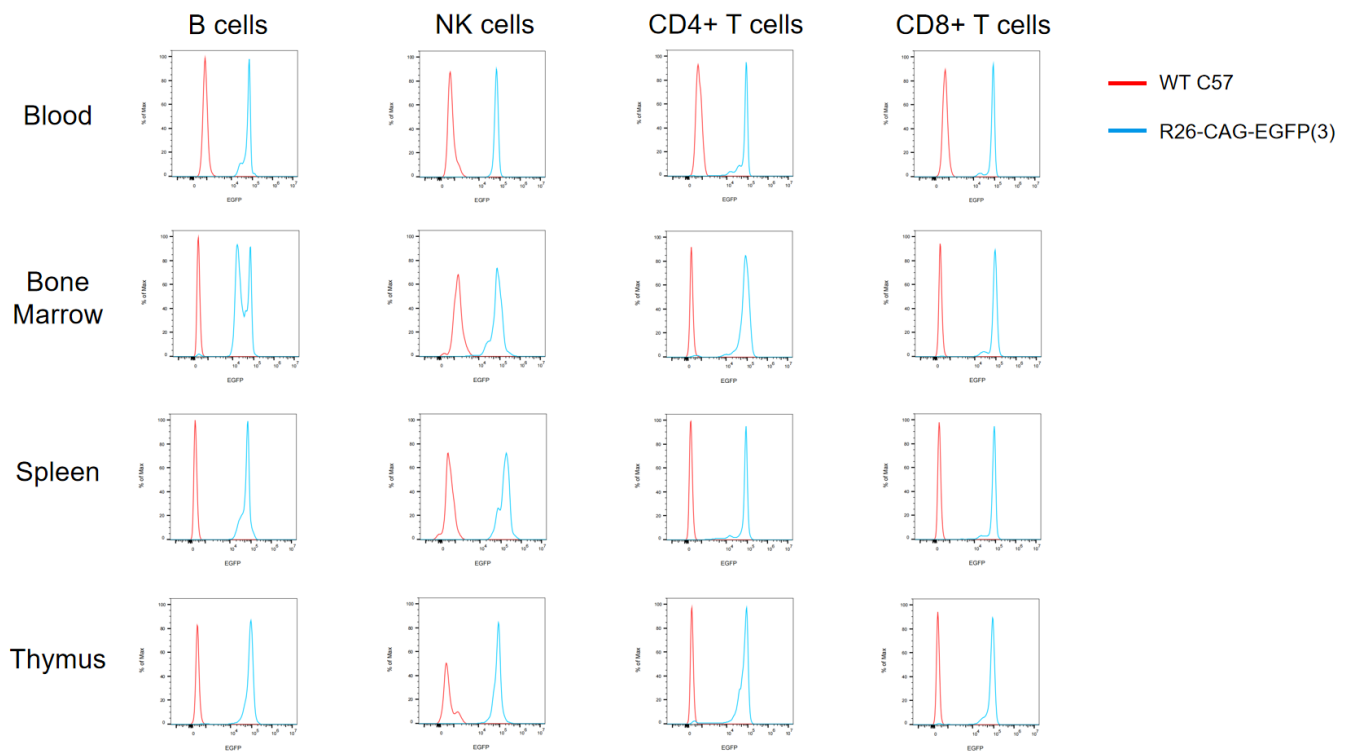


Fig3. Comparison of EGFP expression in live CD45 cells in PB, bone marrow, spleen and thymus.

## Publications

[CCL2-mediated inflammatory pathogenesis underlies high myopia-related anxiety](#)

References: Cell Discovery