

hCCR8

Nomenclature	C57BL/6Smoc- <i>Ccr8</i> ^{em1(hCCR8) Smoc}
Cat. NO.	NM-HU-190053
Strain State	Embryo cryopreservation

Gene Summary

Gene Symbol CCR8	Synonyms	Cmkbr8
	NCBI ID	12776
	MGI ID	1201402
	Ensembl ID	ENSMUSG00000042262
	Human Ortholog	CCR8

Model Description

The endogenous mouse *Ccr8* gene was replaced by human CCR8 gene. While hCCR8(2)(Stock No.NM-HU-2000054) mice function similarly to hCCR8 mice,for more detailed information please contact our technical advisor.

Research Application: Immunotherapy,cancer research,drug screening

*Literature published using this strain should indicate: hCCR8 mice (Cat. NO. NM-HU-190053) were purchased from Shanghai Model Organisms Center, Inc..

Validation Data

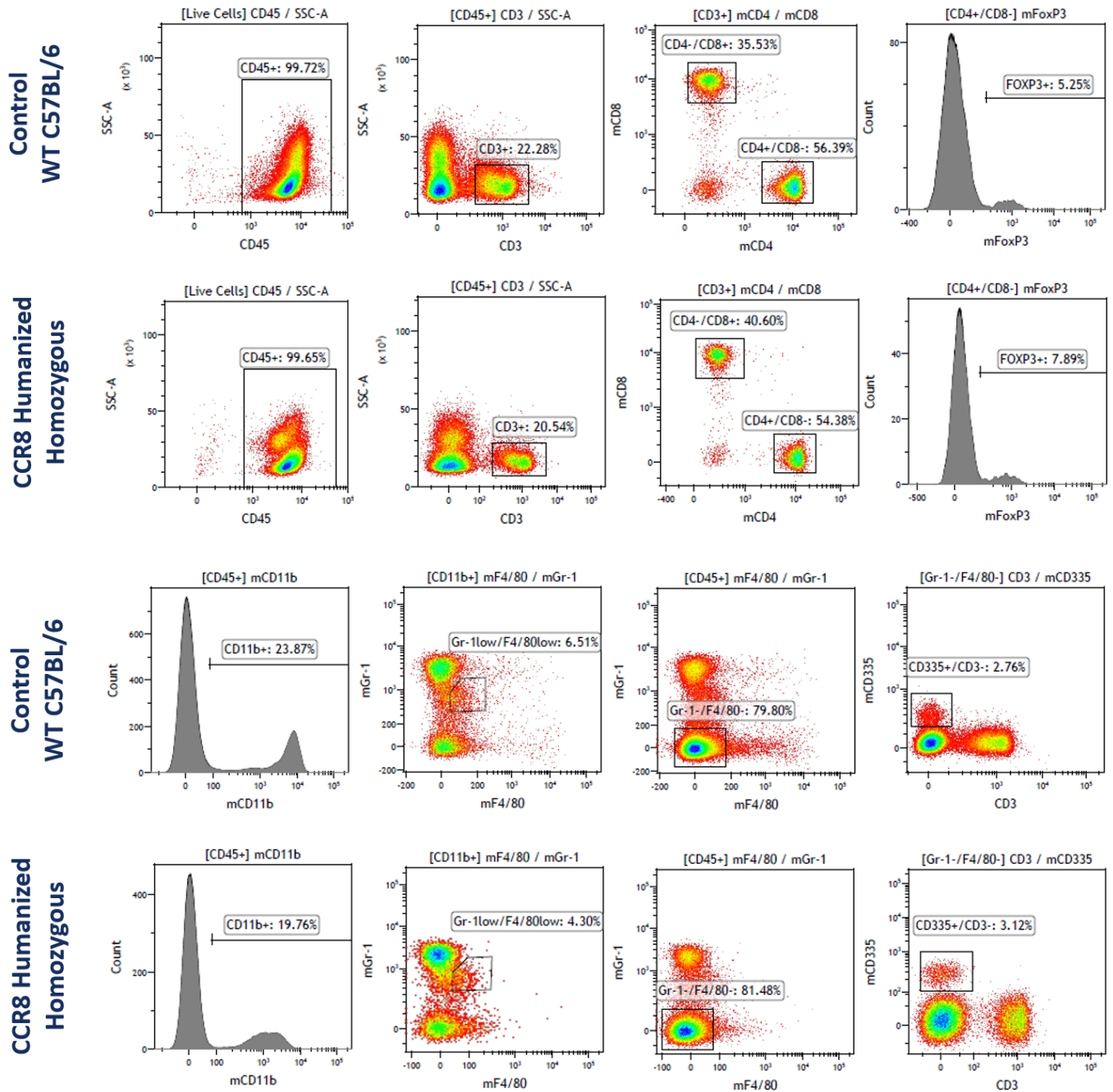


Fig1. Overall proportions of immune cells in the blood of humanized CCR8 mouse.

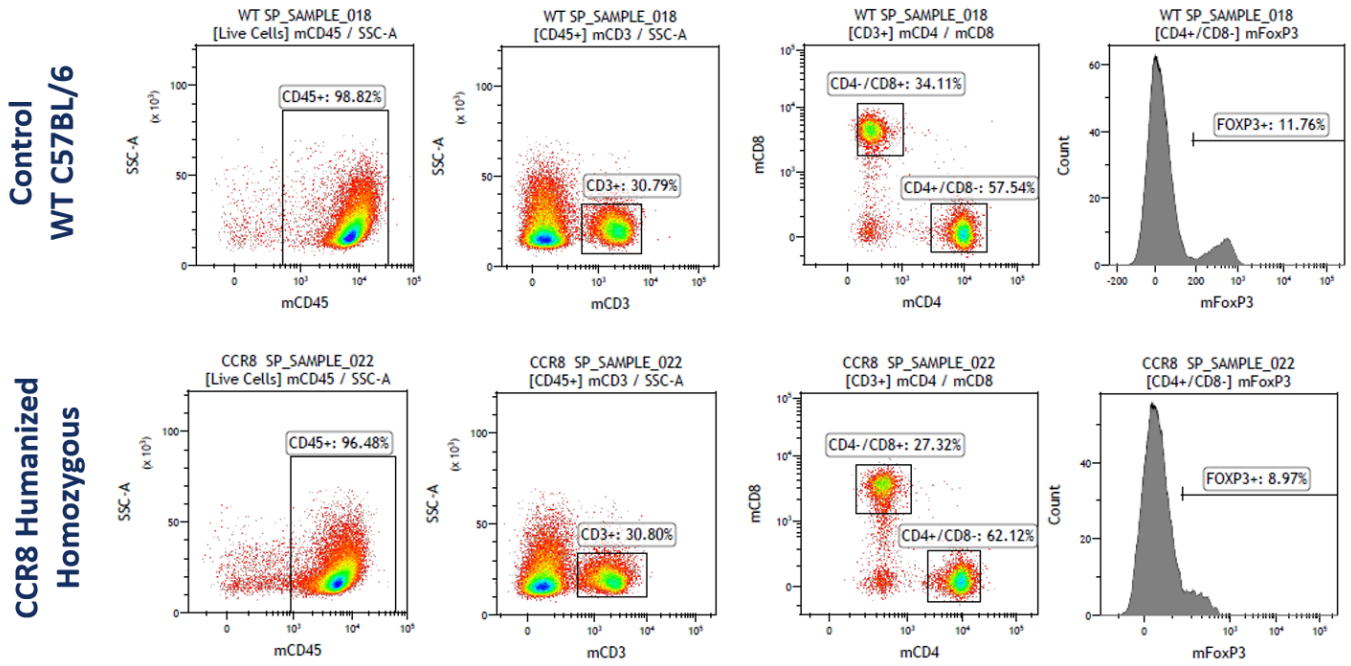


Fig2. Overall proportions of immune cells in the spleen of humanized CCR8 mouse.

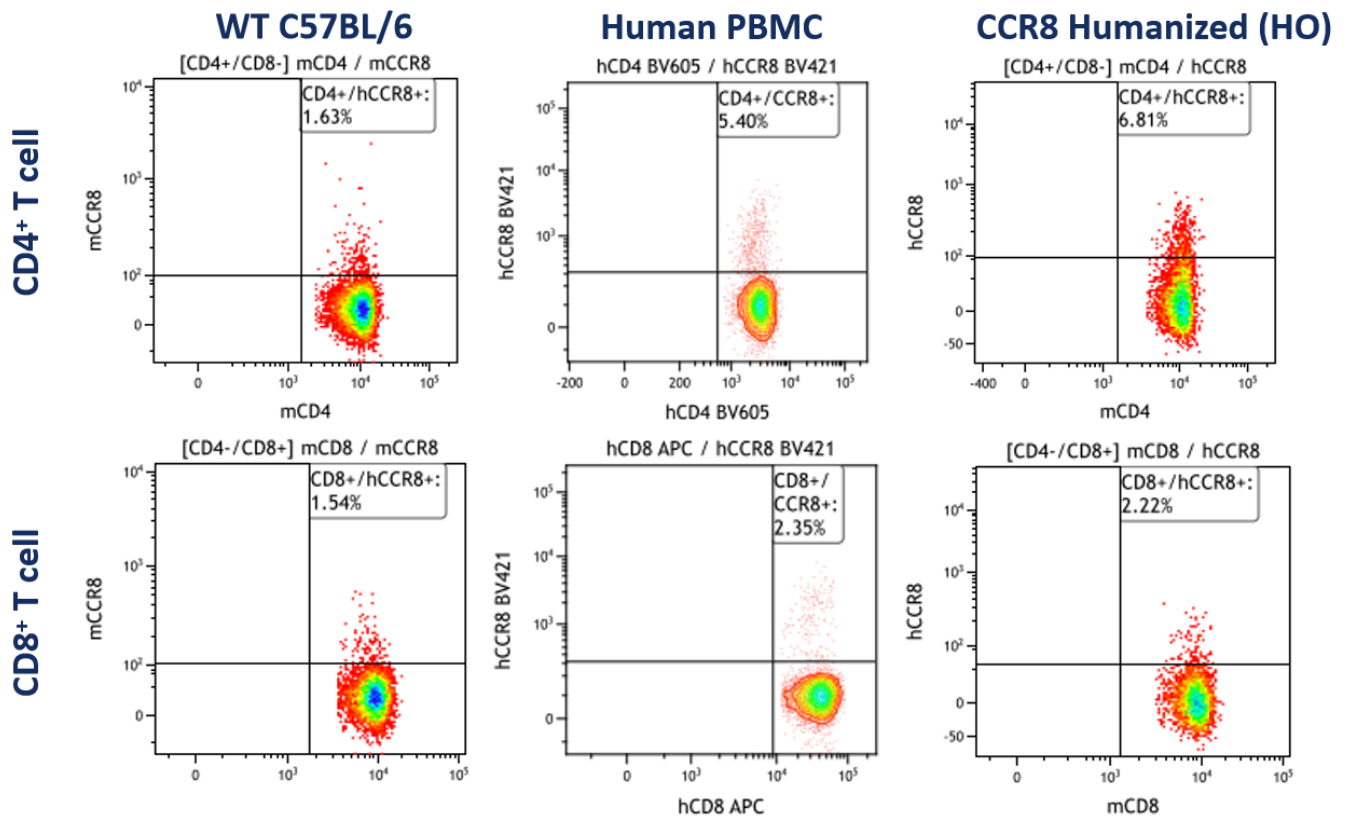
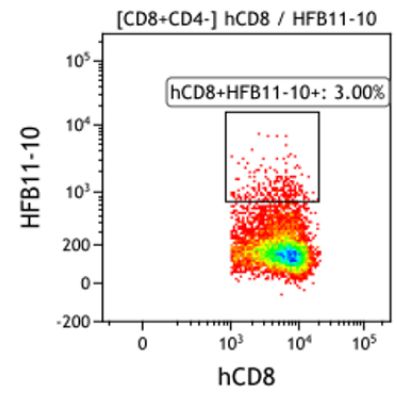
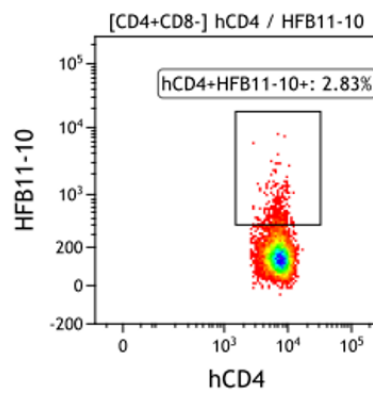
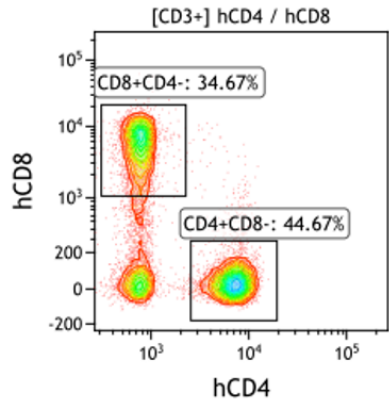
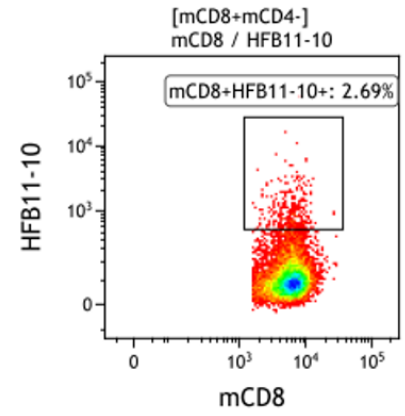
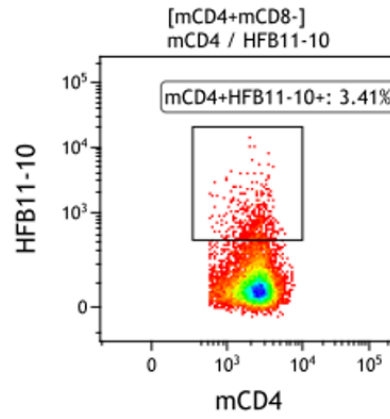
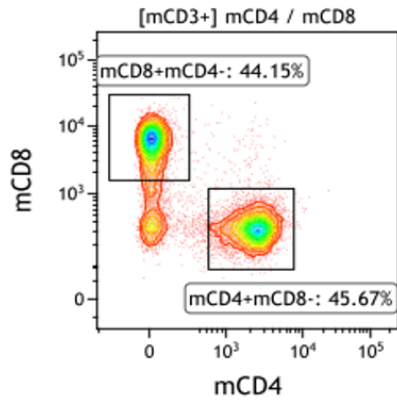


Fig3. hCCR8 expression validation in humanized CCR8 mouse.

Control
Human PBMC



CCR8 Humanized
Homozygous



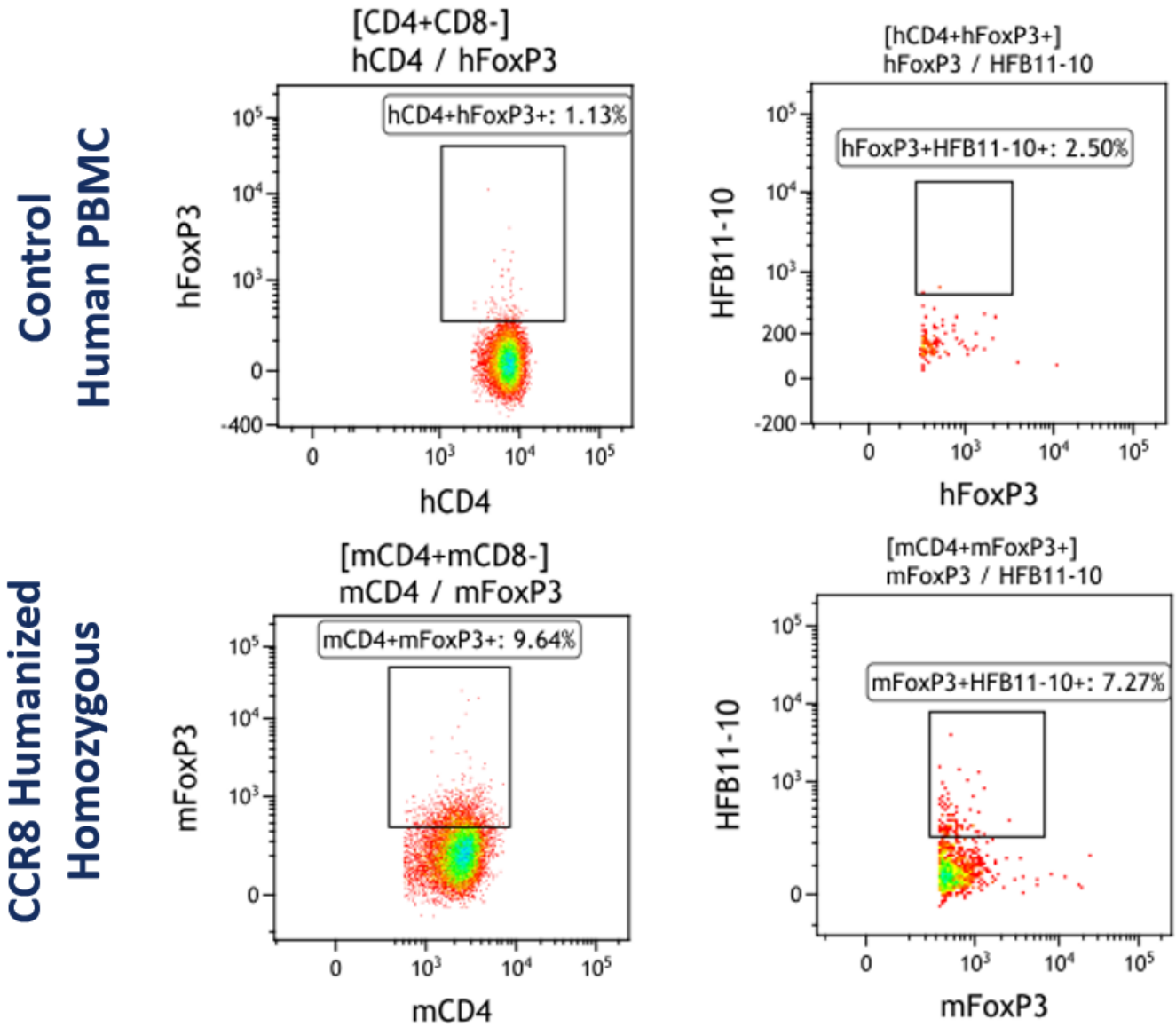


Fig4. Binding of anti-hCCR8 to spleen-derived T cells in humanized CCR8 mouse.

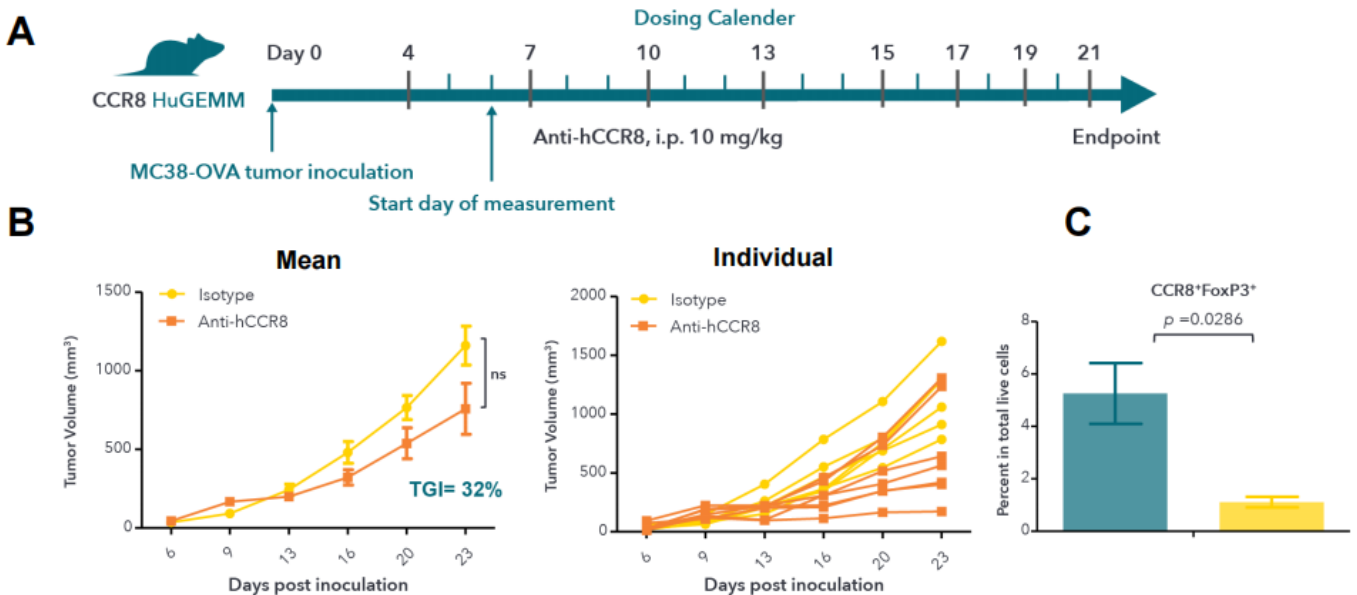


Fig 5. In vivo efficacy study in CCR8 humanized mice grafted with MC38-OVA syngeneic tumor model.

Human specific anti-CCR8 retards the MC38-OVA tumor growth in vivo and leads to the depletion of tumor-resident CCR8+ Treg cells. (A) Schematic diagram of dosing regimen; (B) Mean tumor volumes and individual tumor volumes; (C) Tumor infiltrating CCR8+ Tregs post treatment (Teal column, vehicle control; Yellow column, anti-hCCR8). (In collaboration with Crownbio)

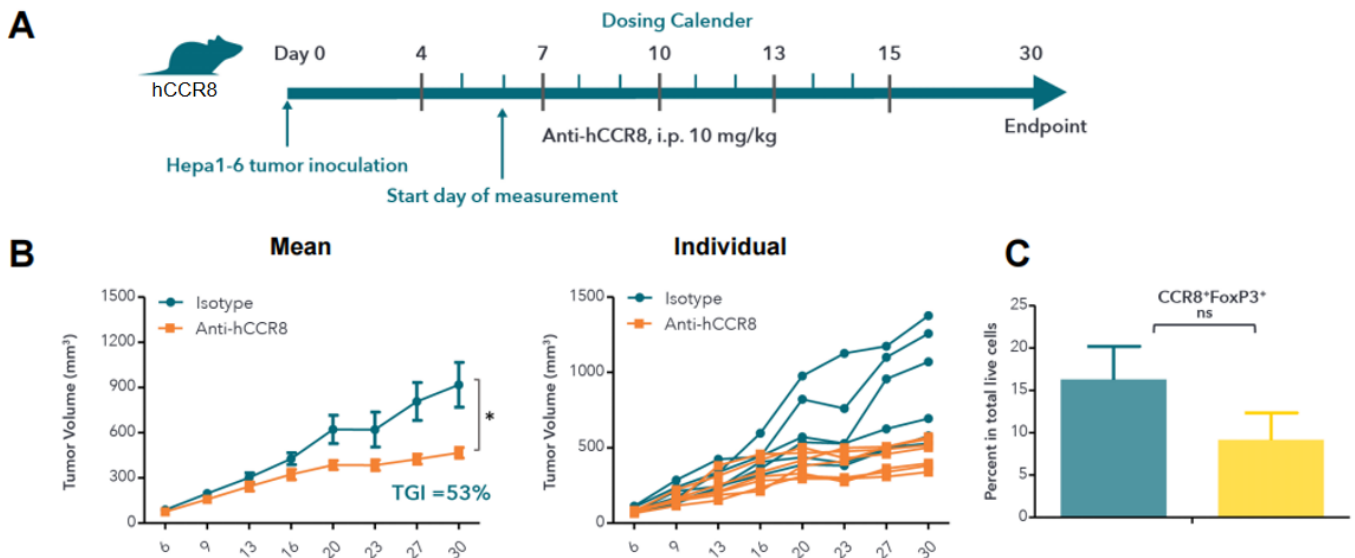


Fig 6. In vivo efficacy study in CCR8 humanized mice grafted with Hepa1-6 syngeneic tumor model.

Human specific anti-CCR8 retards the Hepa1-6 tumor growth in vivo and leads to the depletion of tumor-resident CCR8+ Treg cells. (A) Schematic diagram of dosing regimen; (B) Mean tumor volumes and individual tumor volumes; (C) Tumor infiltrating CCR8+ Tregs post treatment (Teal column, vehicle control; Yellow column, anti-hCCR8). (In collaboration with Crownbio)