

R26-CAG-LSL-Luc-2A-EGFP

Nomenclature	C57BL/6Smoc- <i>Gt(ROSA)26Sor</i> ^{em1(CAG-LSL-Luciferase-2A-EGFP-wpre-polyA)Smoc}
Cat. NO.	NM-KI-190095
Strain State	Repository Live

Gene Summary

Gene Symbol Gt(ROSA)26Sor	Synonyms	R26, ROSA26, AV258896, Gtrg eo26, Gtrosa26, Thumpd3as1
	NCBI ID	14910
	MGI ID	104735
	Ensembl ID	ENSMUSG00000086429

Model Description

A CAG-LSL-Luciferase-2A-EGFP-wpre-polyA expression cassette was inserted at the Rosa26 locus site.

Research Application: reporter mice, Luciferase and EGFP

*Literature published using this strain should indicate: R26-CAG-LSL-Luc-2A-EGFP mice (Cat. NO. NM-KI-190095) were purchased from Shanghai Model Organisms Center, Inc..

Validation Data

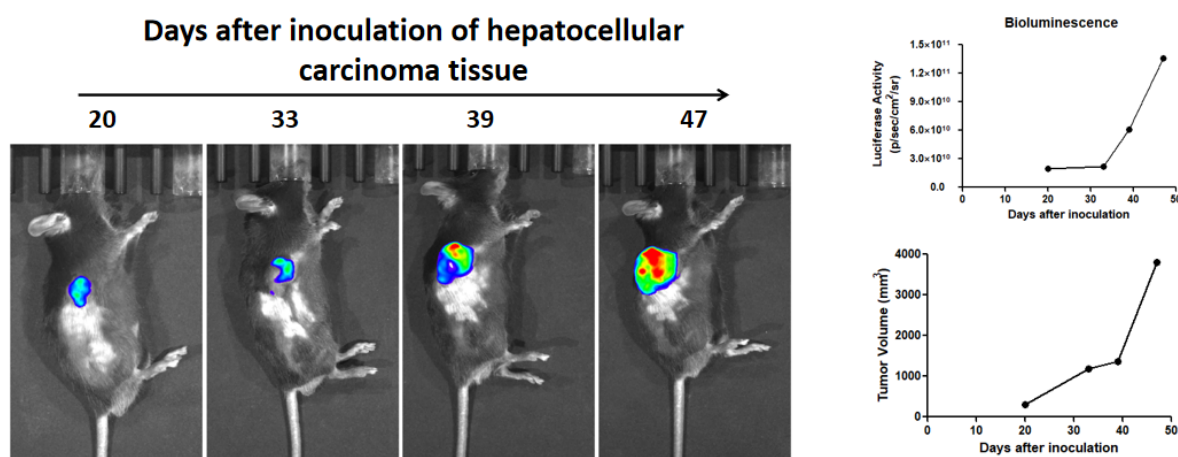


Fig1. Representative in vivo bioluminescence imaging showing strong luminescence in projection

to the liver area with MYC overexpression in H11-LSL-Myc; Rosa26-LSL-Luc-EGFP; Alb-Cre⁺ mice. In the absence of cre, some leakiness can be detected.

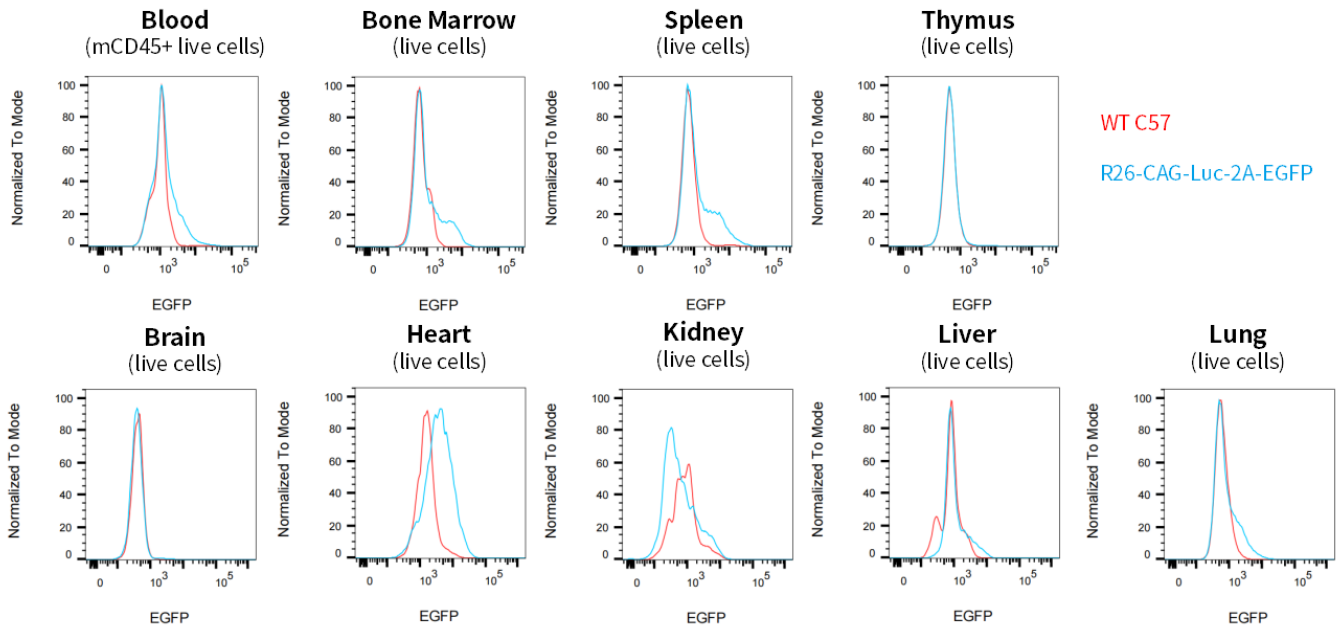


Fig2. Comparison of EGFP expression in various organs.

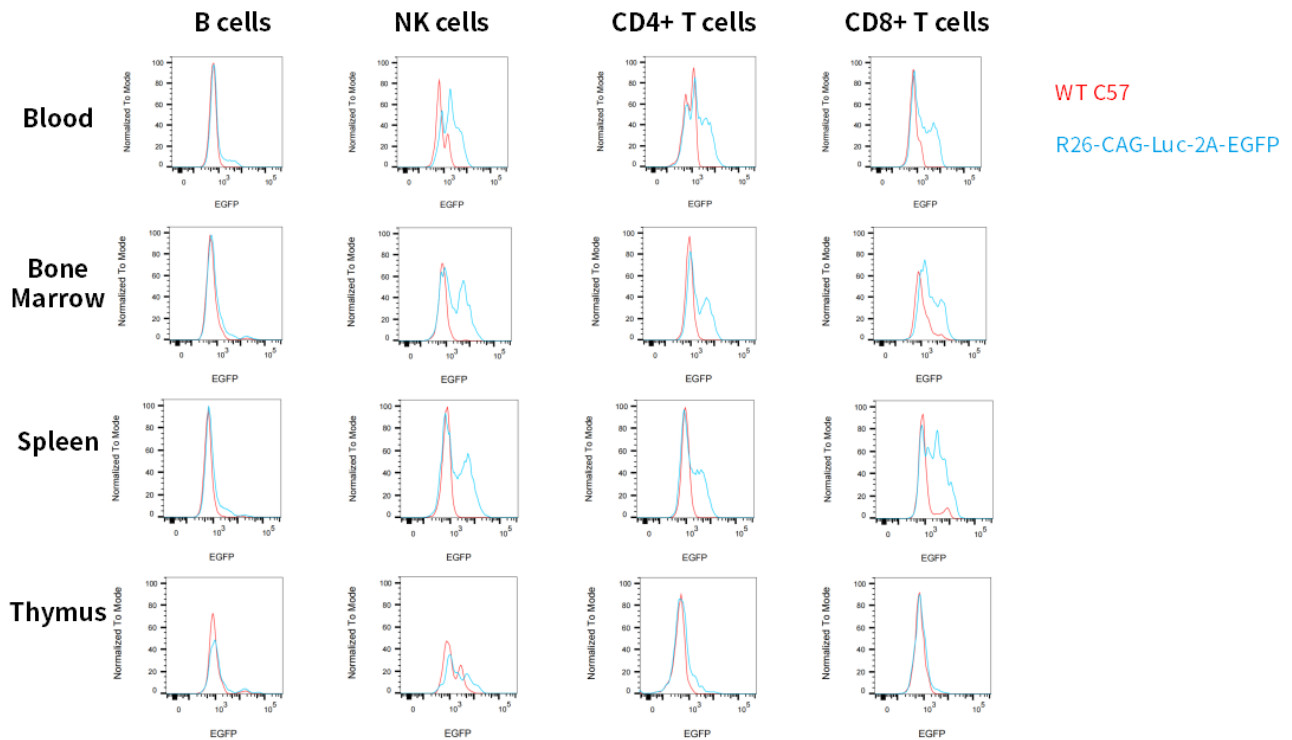


Fig3. Comparison of EGFP expression in PB/BM/SP/THY.