

Ucp1-CreERT2

Nomenclature	C57BL/6Smoc- <i>Ucp1</i> ^{em1(Kozak-CreERT2-WPRE-polyA)Smoc}
Cat. NO.	NM-KI-190102
Strain State	Repository Live

Gene Summary

Gene Symbol Ucp1	Synonyms	Ucp; Slc25a7; AI385626
	NCBI ID	22227
	MGI ID	98894
	Ensembl ID	ENSMUSG00000031710
	Human Ortholog	UCP1

Model Description

A Kozak-CreERT2-WPRE-polyA expression cassette was knocked into the Ucp1 gene start codon site.

Research Application: Cre recombinase tool

*Literature published using this strain should indicate: Ucp1-CreERT2 mice (Cat. NO. NM-KI-190102) were purchased from Shanghai Model Organisms Center, Inc..

Validation Data

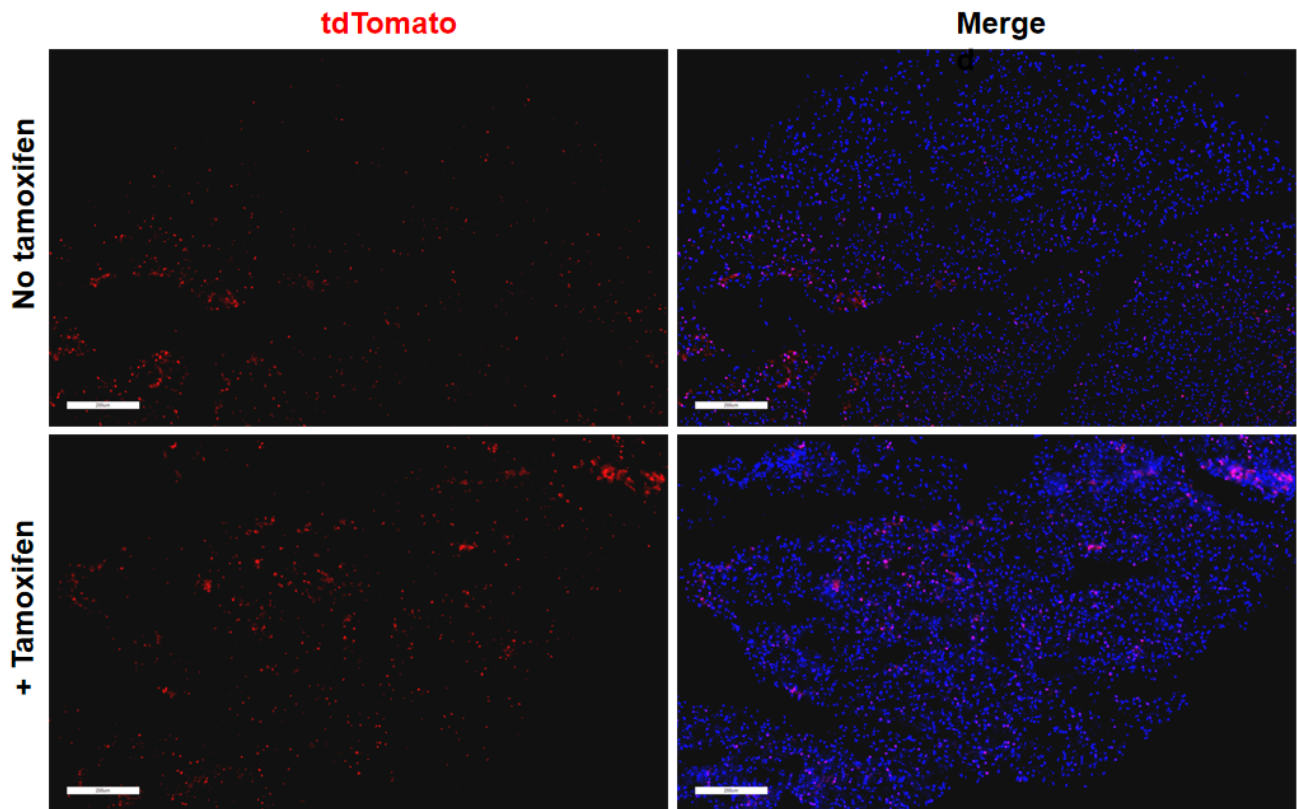


Fig1. Cre mediated recombination in brown fat of $Ucp1^{CreERT2/+};Rosa26^{tdTomato/+}$ mouse.

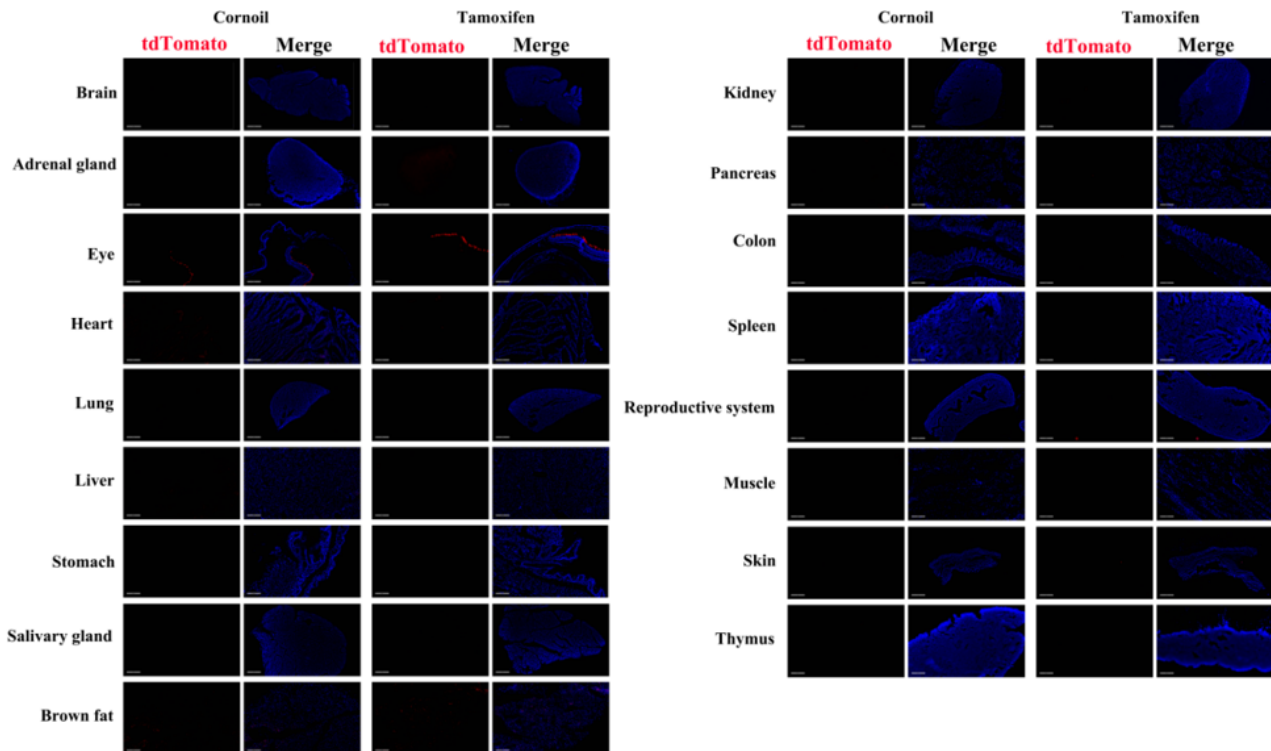


Fig2. Detection of tdTomato(red) in various tissues of $Ucp1^{CreERT2/+};Rosa26^{tdTomato/+}$ mouse. Expression tissues include: brown fat. A few cells expressed in salivary gland and thymus. Tissues that unexpressed include brain, adrenal gland, retina, heart, lung, liver, stomach, kidney, pancreas, colon, spleen, uterus, muscle, and skin. (9-

week old, female) (For more detailed information please contact our technical advisor.)
