

B16F10-hPD-L1

Strain Information

Cat. NO. NM-S31A-TM01

Cell Line B16F10-*Cd274*^{em1(hPDL1)/Smoc}

Strain State Validation of tumorigenic capacity completed

Model Description The endogenous mouse *Cd274*(also known as PD-L1) gene was replaced by human PDL1 gene.

*Literature published using this strain should indicate: B16F10-hPD-L1 cell line (Cat. NO. NM-S31A-TM01) was purchased from Shanghai Model Organisms Center, Inc..

Validation Data

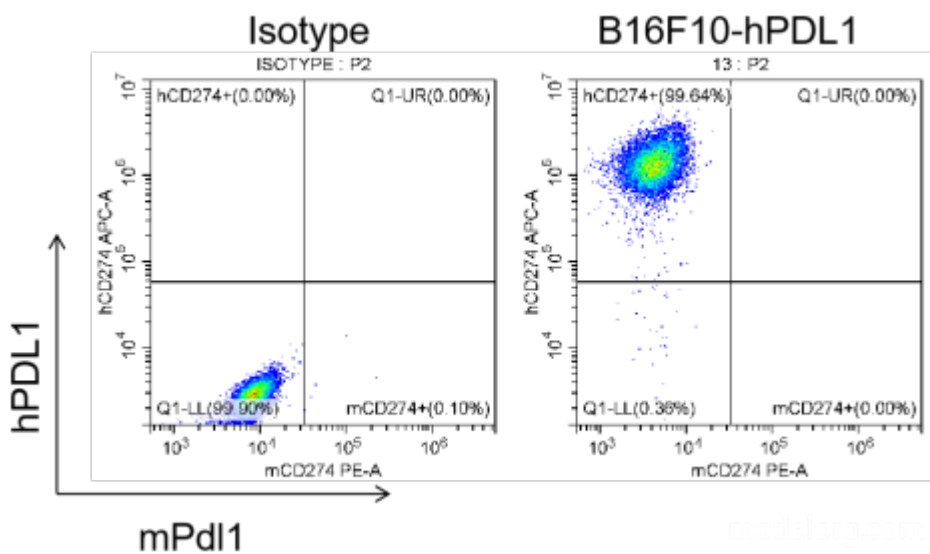


Figure 1. hPDL1 expression in B16F10-hPDL1 cell lines.

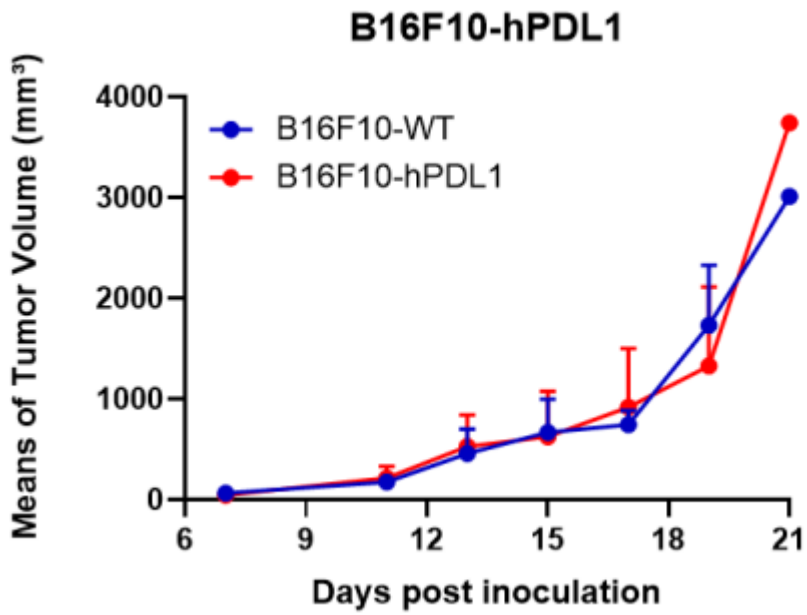


Figure 2. Tumor growth curve of B16F10-hPDL1 syngeneic model (n=5).

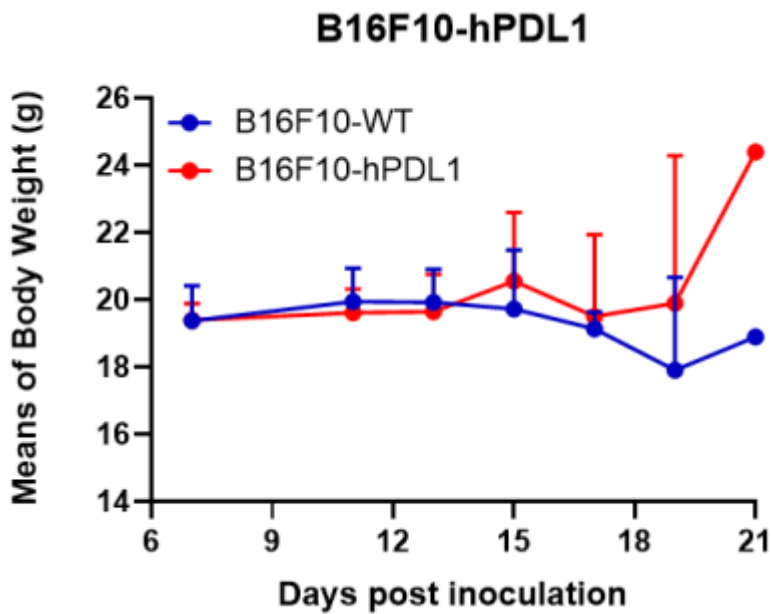


Figure 3. Body weight change of B16F10-hPDL1 syngeneic model (n=5).

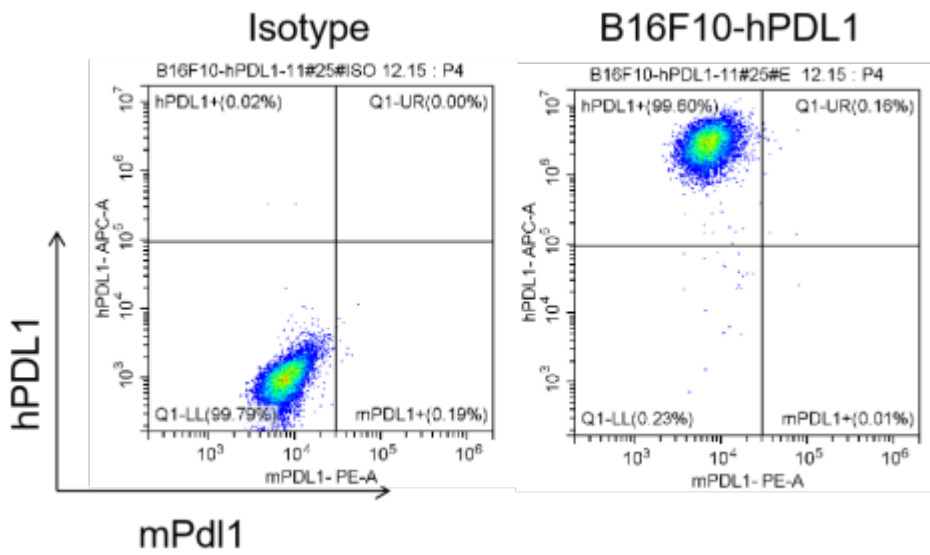


Figure 4. The expression of hPDL1 in humanized modified tumors by FACS