

# MEF/Cdkn2a-Luc-tdTomato-CreERT2

## Strain Information

Cat. NO.	NM-YD02
Cell Line	MEF/Cdkn2a-Luc-tdTomato-CreERT2
Strain State	Validation of target gene expression completed
Model	Cdkn2a-Luc-tdTomato-CreERT2 derived mouse embryo fibroblast
Description	*Literature published using this strain should indicate: MEF/Cdkn2a-Luc-tdTomato-CreERT2 cell line (Cat. NO. NM-YD02) was purchased from Shanghai Model Organisms Center, Inc..

## Validation Data

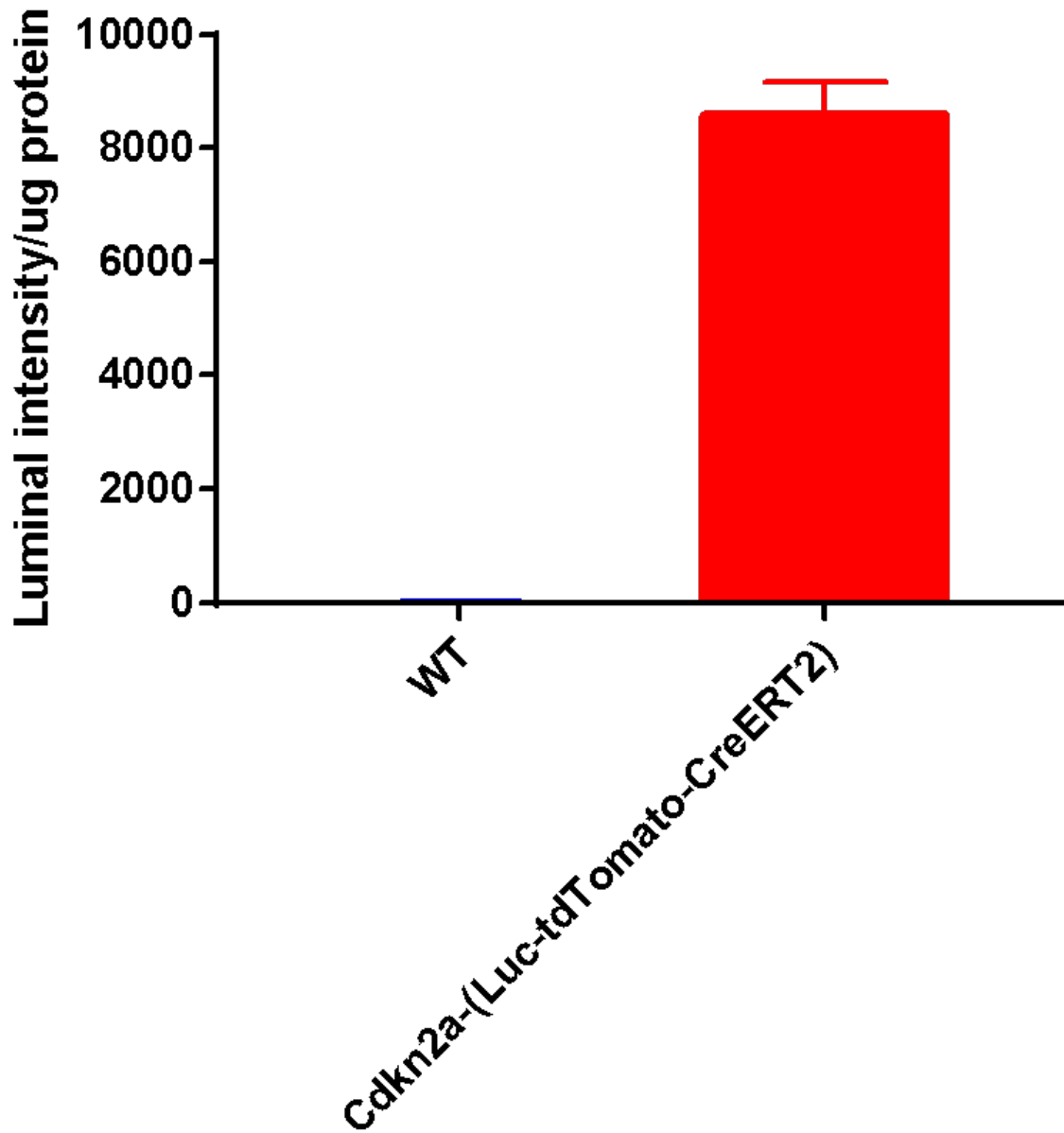


Fig1. Luciferase reporter assays in MEF cells(WT and Cdkn2a KI MEFs).