

hCD55

Nomenclature	C57BL/6Smoc- <i>Cd55</i> ^{tm(hCD55)Smoc}
Cat. NO.	NM-HU-215008
Strain State	Sperm cryopreservation

Gene Summary

Gene Symbol Melf	Synonyms	MTf; Mfi2; CD228
	NCBI ID	30060
	MGI ID	1353421
	Ensembl ID	ENSMUSG00000022780
	Human Ortholog	MELTF

Model Description

The endogenous mouse Cd55 gene was replaced by human CD55 gene.

*Literature published using this strain should indicate: hCD55 mice (Cat. NO. NM-HU-215008) were purchased from Shanghai Model Organisms Center, Inc..

Validation Data

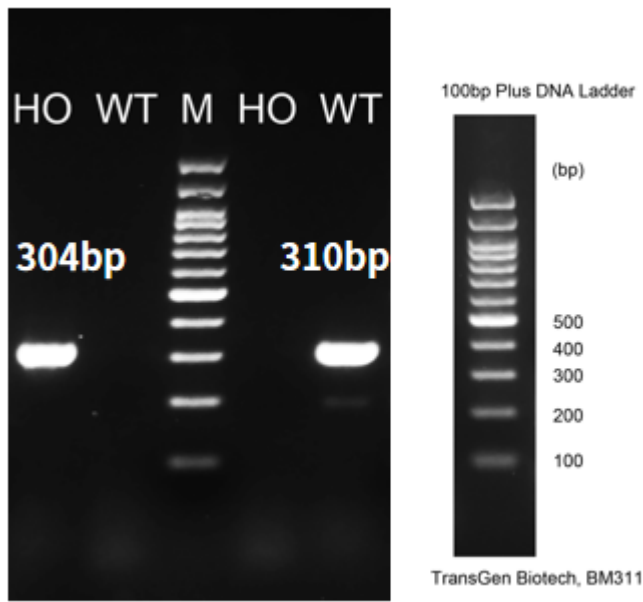


Fig1. Detection of CD55 expression in bladder by RT-PCR.

Wild type: only one band at 310 bp with primers F1/R1(mCd55);

Homozygous: only one band at 304 bp with primers F2/R2(hCD55).

Abbr. M, DNA marker; HO, homozygous; WT, wild type.

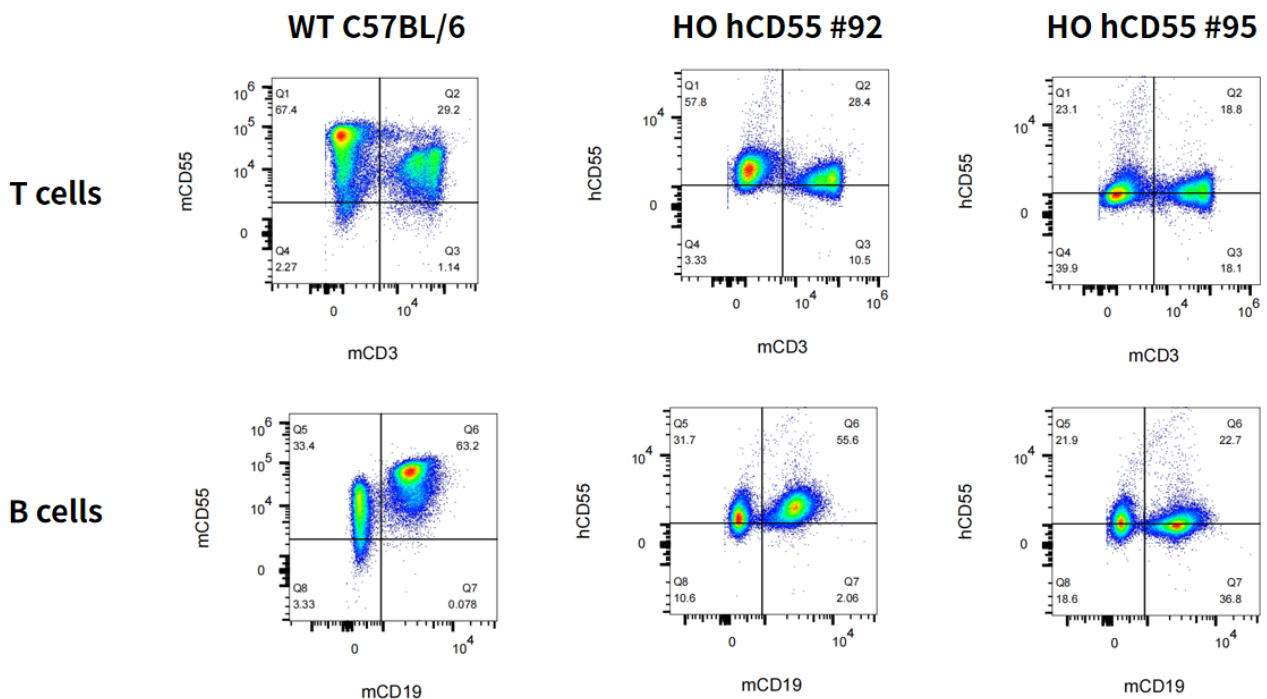


Fig2. Detection of hCD55 expression in spleen in hCD55 KI mice.

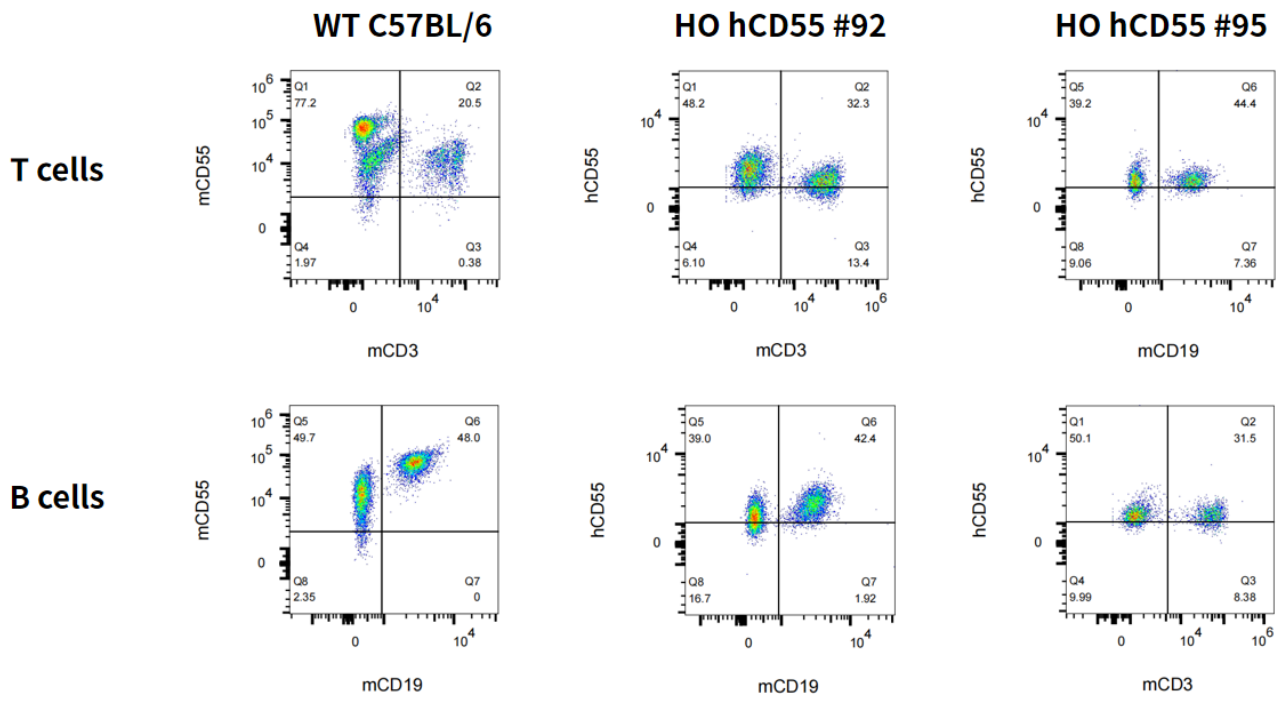


Fig3. Detection of hCD55 expression in blood in hCD55 KI mice.