

# hCD226

<b>Nomenclature</b>	C57BL/6Smoc- <i>Cd226</i> <sup>em(hCD226)Smoc</sup>
<b>Cat. NO.</b>	NM-HU-215012
<b>Strain State</b>	Embryo cryopreservation

## Gene Summary

<b>Gene Symbol</b> Cd226	<b>Synonyms</b>	Pta1; DNAM1; DNAM-1; TLISA1; BC051526
	<b>NCBI ID</b>	<a href="#">225825</a>
	<b>MGI ID</b>	<a href="#">3039602</a>
	<b>Ensembl ID</b>	<a href="#">ENSMUSG00000034028</a>
	<b>Human Ortholog</b>	CD226

## Model Description

The endogenous mice Cd226 gene was replaced by human CD226 gene.

\*Literature published using this strain should indicate: hCD226 mice (Cat. NO. NM-HU-215012) were purchased from Shanghai Model Organisms Center, Inc..

## Validation Data

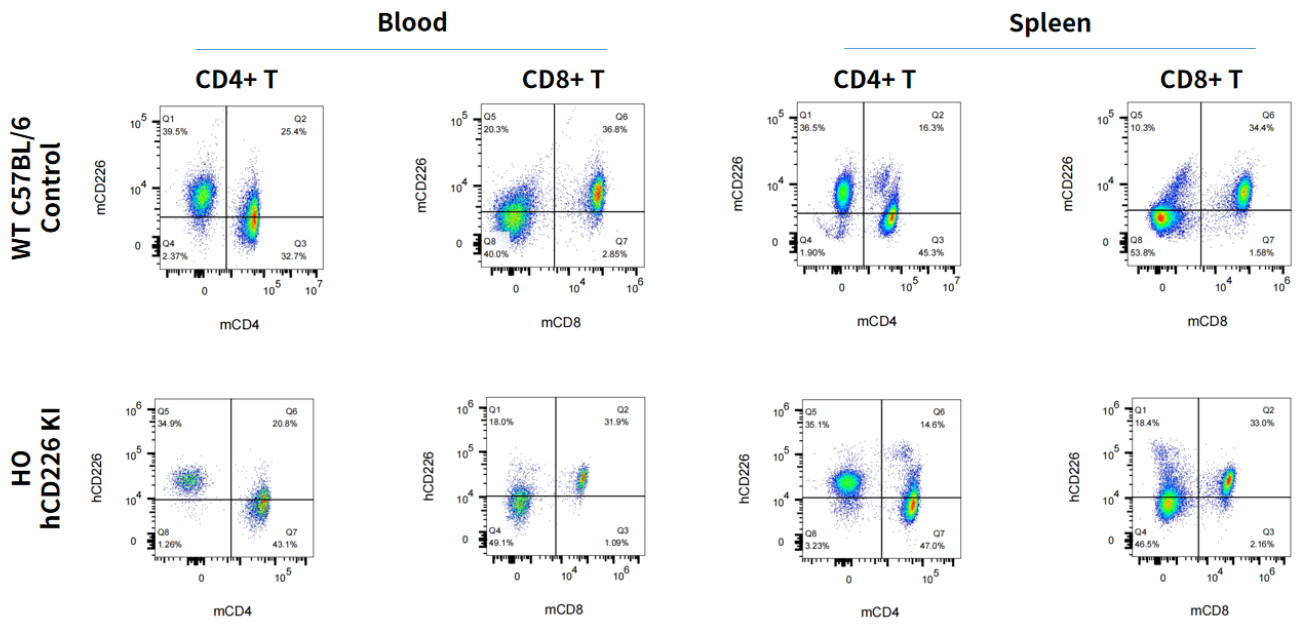


Fig1. Expression characterization of hCD226 on T cells in blood and spleen in hCD226 KI mice.