

# MC38-hPD-L1/hCD47(2)

## Strain Information

Cat. NO. NM-S13-TM28

Cell Line MC38-*Cd274*<sup>em1(hCD274)Smoc</sup>*Cd47*<sup>em1(hCD47)Smoc</sup>

Strain State Validation of tumorigenic capacity completed

Model Description The endogenous mouse *Cd274/hCd47* gene was replaced by human *CD274/hCD47* gene.

\*Literature published using this strain should indicate: MC38-hPD-L1/hCD47(2) cell line (Cat. NO. NM-S13-TM28) was purchased from Shanghai Model Organisms Center, Inc..

## Validation Data

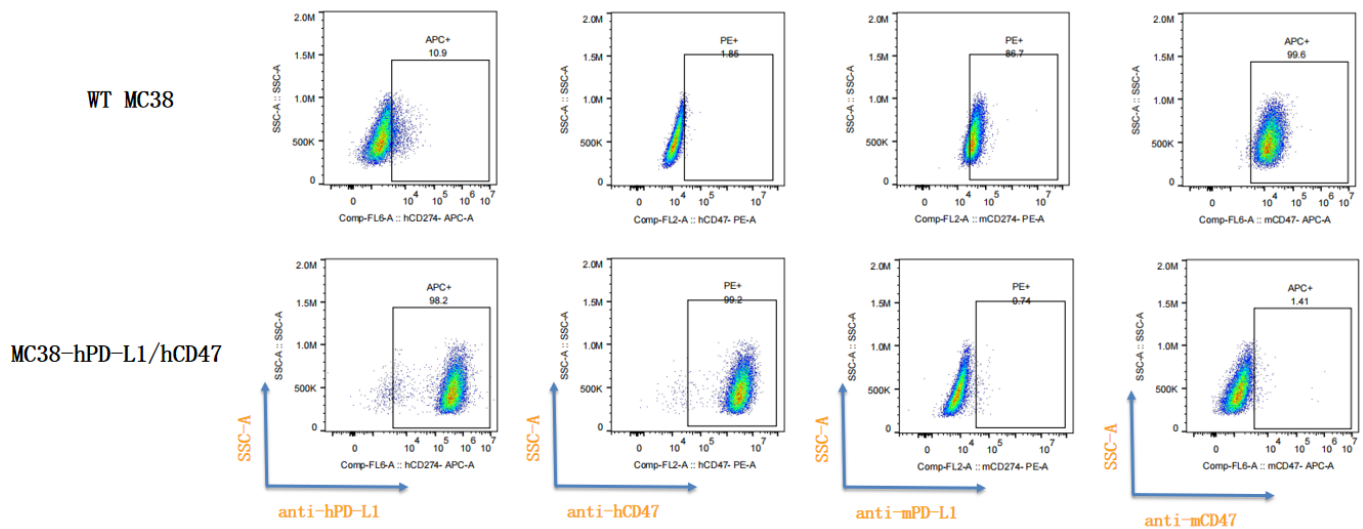


Fig1. hPD-L1 and hCD47 expression *in vitro* cultured cells of MC38-hPD-L1/hCD47.

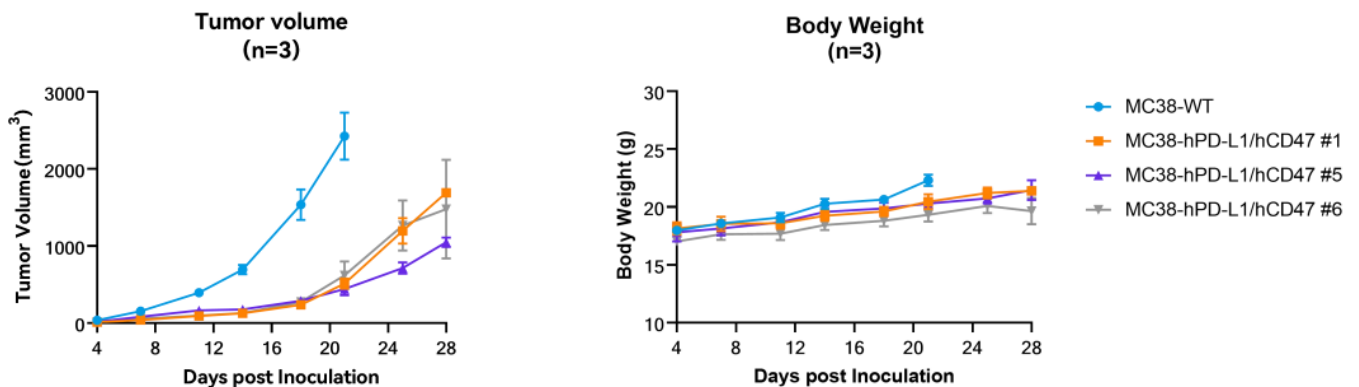


Fig2. *In vivo* validation of MC38-hPD-L1/hCD47 in C57BL/6 mice. C57BL/6 mice were inoculated with MC38-hPD-L1/hCD47 subcutaneously at  $1 \times 10^6$  cells/mouse inoculum for tumor development.

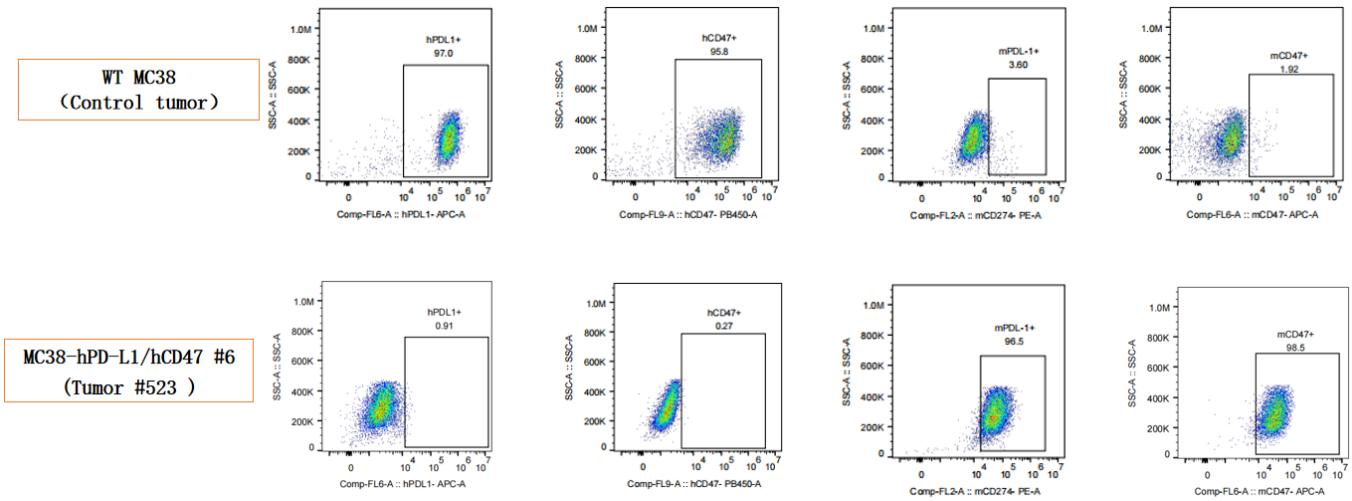


Fig3. hPD-L1 and hCD47 expression in tumors after *in vivo* growth of MC38-hPD-L1/hCD47 in wild type C57BL/6 mice. The tumors were collected at day 25 post tumor cell inoculation.