

MC38-hCEACAM6

Strain Information

Cat. NO.	NM-S13-TM35
Cell Line	MC38- <i>IgS2</i> ^{em1(hCEACAM6)Smoc}
Strain State	Validation of target gene expression completed
Model	A CEACAM6 expression cassette was knocked into the H11 locus.
Description	*Literature published using this strain should indicate: MC38-hCEACAM6 cell line (Cat. NO. NM-S13-TM35) was purchased from Shanghai Model Organisms Center, Inc..

Validation Data

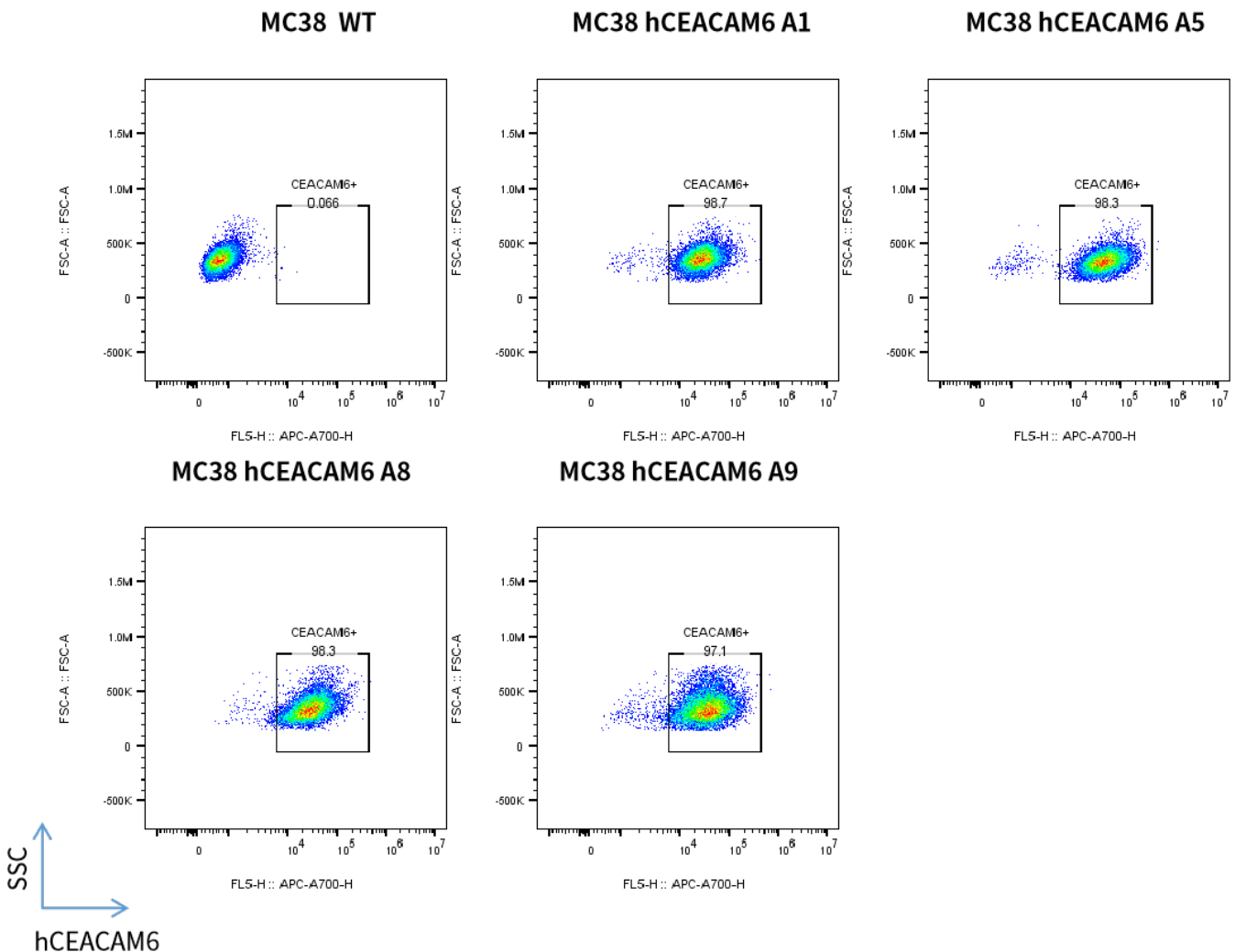


Fig1. hCEACAM6 expression on in vitro cultured cells of MC38-hCEACAM6
