

MC38-hEpCAM

Strain Information

Cat. NO.	NM-S13-TM39
Cell Line	MC38- <i>IgS2</i> ^{em1(hEpCAM)} <i>Smoc</i>
Strain State	Validation of tumorigenic capacity completed
Model	A EpCAM expression cassette was knocked into the H11 locus.
Description	*Literature published using this strain should indicate: MC38-hEpCAM cell line (Cat. NO. NM-S13-TM39) was purchased from Shanghai Model Organisms Center, Inc..

Validation Data

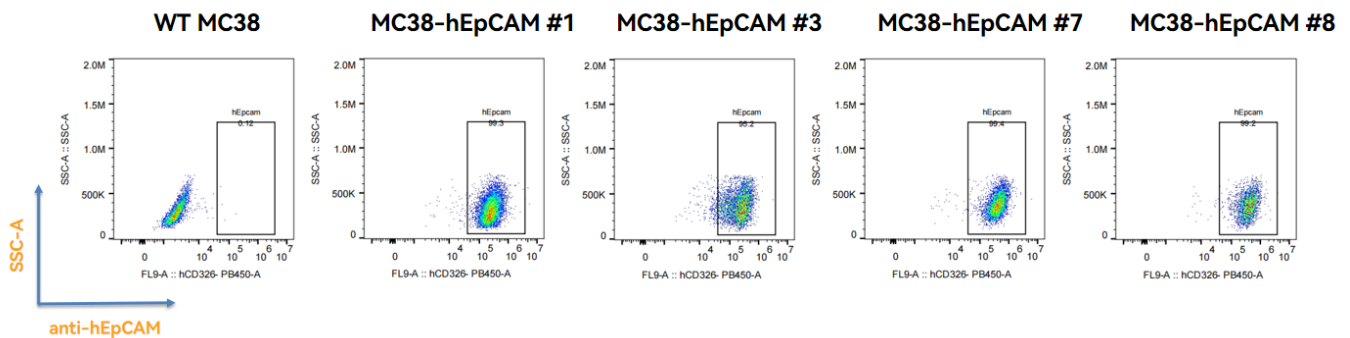


Fig1. hEpCAM expression on *in vitro* cultured cells of MC38-hEpCAM.

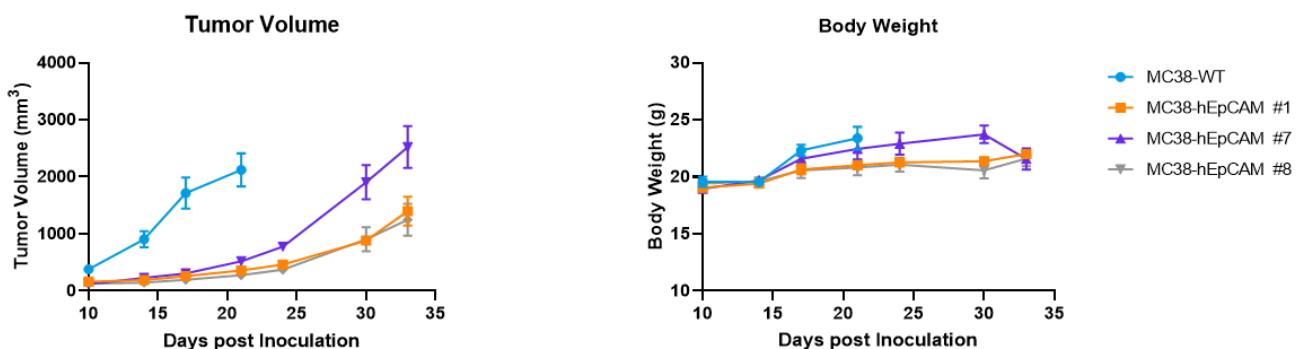


Fig2. *In vivo* validation of MC38-hEpCAM in C57BL/6 mice. C57BL/6 mice were inoculated with MC38-hEpCAM subcutaneously at 1×10^6 cells/mouse inoculum for tumor development.

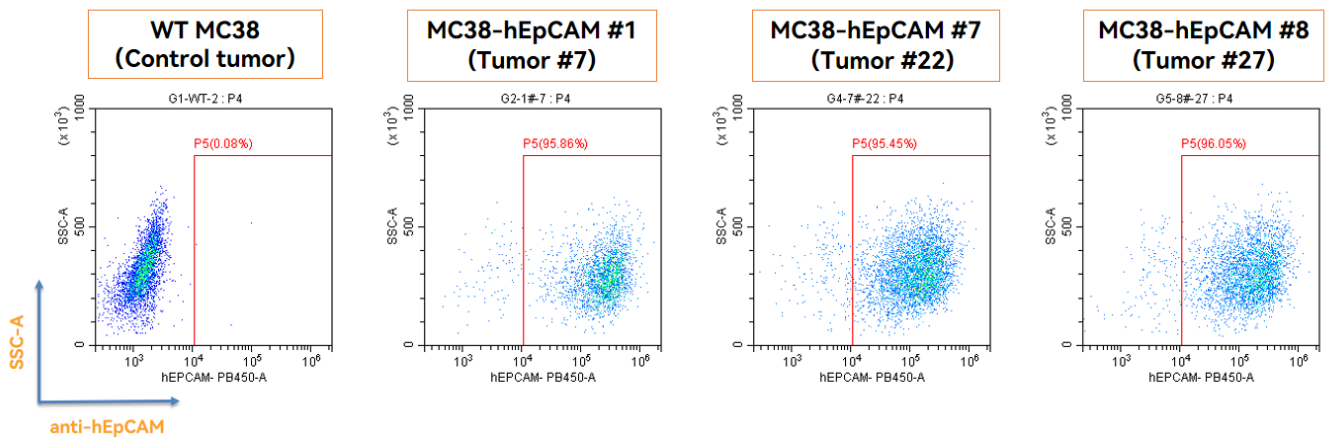


Fig3. hEpCAM expression in tumors after *in vivo* growth of MC38-hEpCAM in wild type C57BL/6 mice. The tumors were collected at day 28 post tumor cell inoculation.

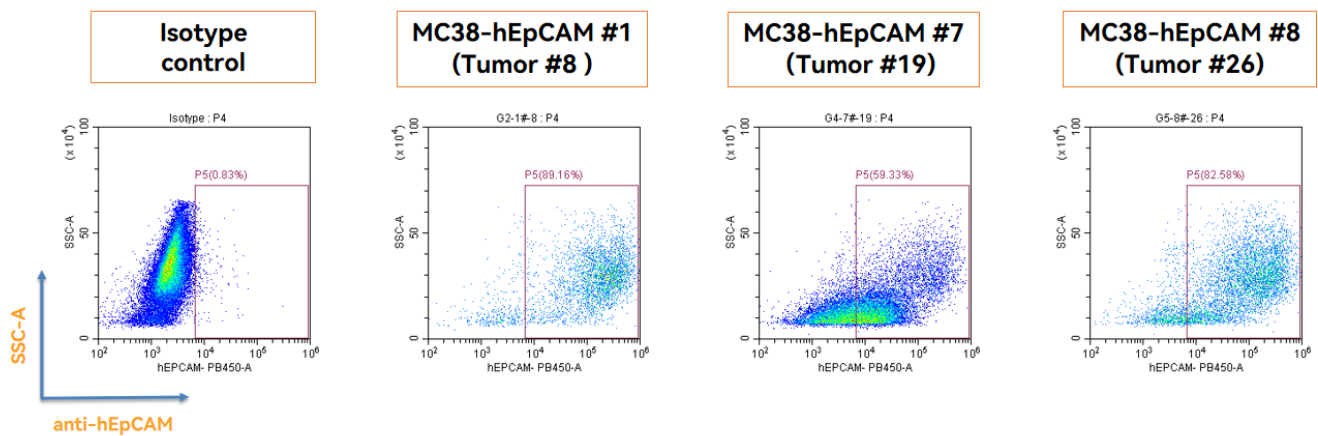


Fig4. hEpCAM expression in tumors after *in vivo* growth of MC38-hEpCAM in wild type C57BL/6 mice. The tumors were collected at day 37 post tumor cell inoculation.