

MC38-hFCRH5

Strain Information

Cat. NO.	NM-S13-TM41
Cell Line	MC38- <i>Ig52</i> ^{em1(hFCRH5)} Smoc
Strain State	Validation of target gene expression completed
Model	A FCRH5 expression cassette was knocked into the H11 locus.
Description	*Literature published using this strain should indicate: MC38-hFCRH5 cell line (Cat. NO. NM-S13-TM41) was purchased from Shanghai Model Organisms Center, Inc..

Validation Data

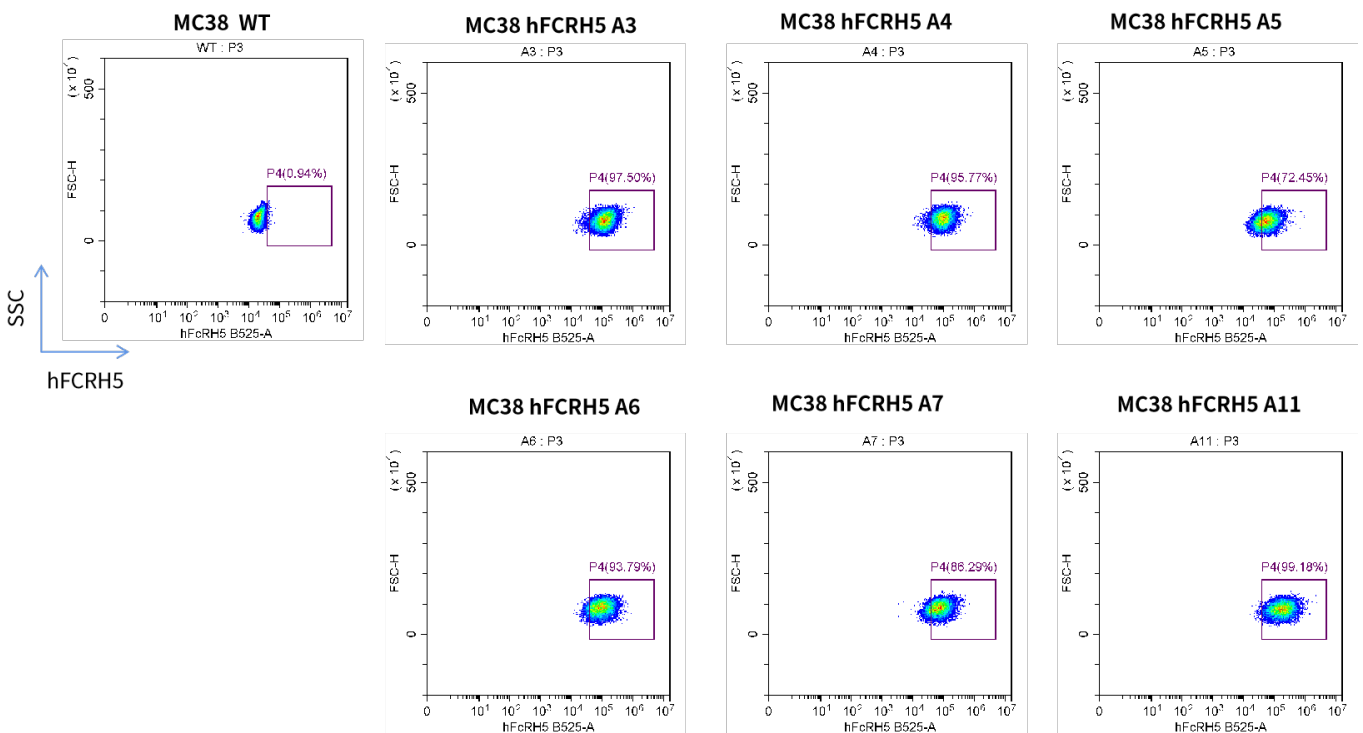


Fig1. hFCRH5 expression on in vitro cultured cells of MC38-hFCRH5