

H22-hPD-L1

Strain Information

Cat. NO.	NM-GA01-TM01
Cell Line	H22- <i>Cd274</i> ^{em1(hPDL1)/Smoc}
Strain State	Validation of tumorigenic capacity completed
Model	The endogenous mouse <i>Cd274</i> gene was replaced by human <i>CD274</i> gene.
Description	*Literature published using this strain should indicate: H22-hPD-L1 cell line (Cat. NO. NM-GA01-TM01) was purchased from Shanghai Model Organisms Center, Inc..

Validation Data

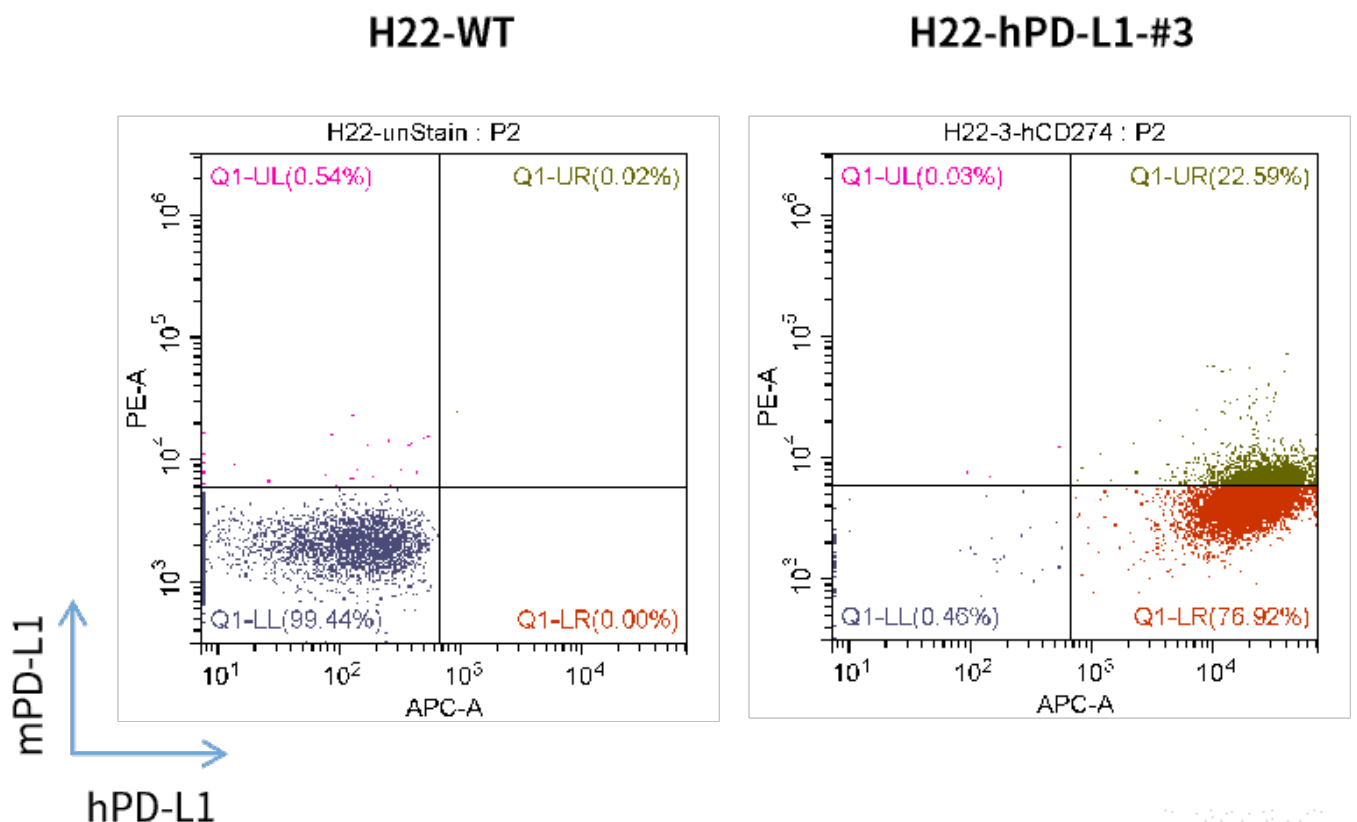


Fig 1. hPD-L1 expression on in vitro cultured cells of H22-hPD-L1

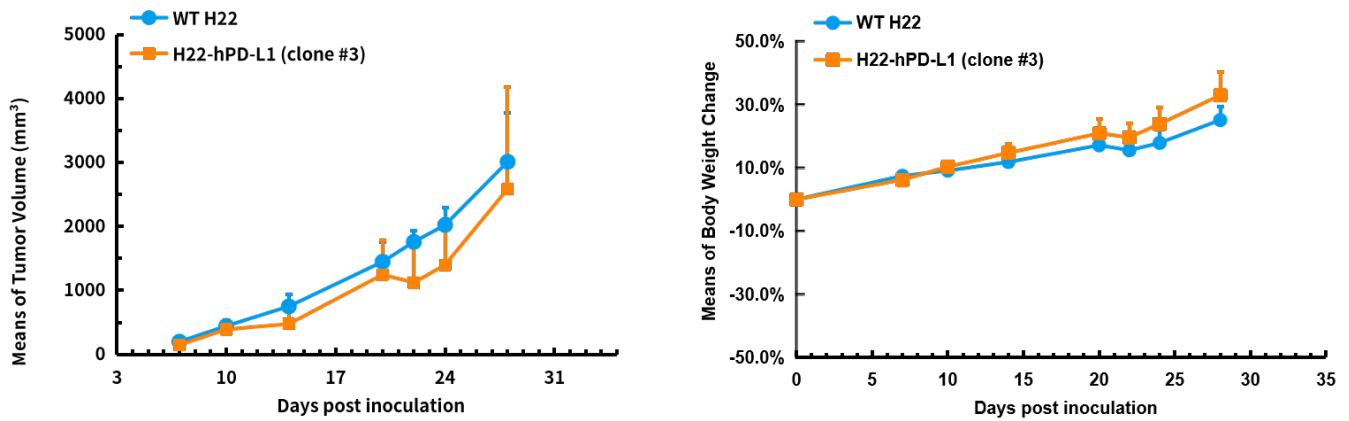


Fig 2. hPD-L1(BALB/c) mice were inoculated with H22-hPD-L1 subcutaneously at 1×10^6 cells/mouse inoculum for tumor development

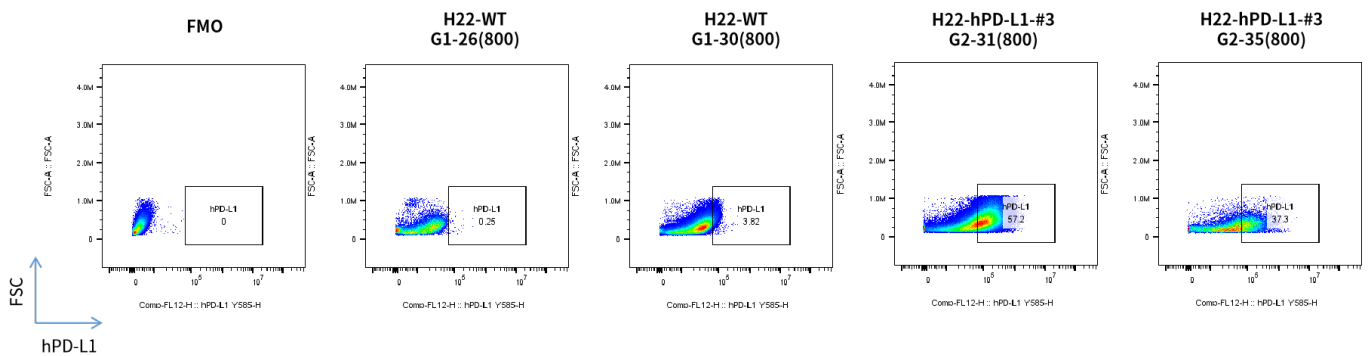


Fig 3. hPD-L1 expression in tumors after in vivo growth of H22-hPD-L1 in wild type hPD-L1(BALB/c) mouse. The tumors were collected at day 11 post tumor cell inoculation.

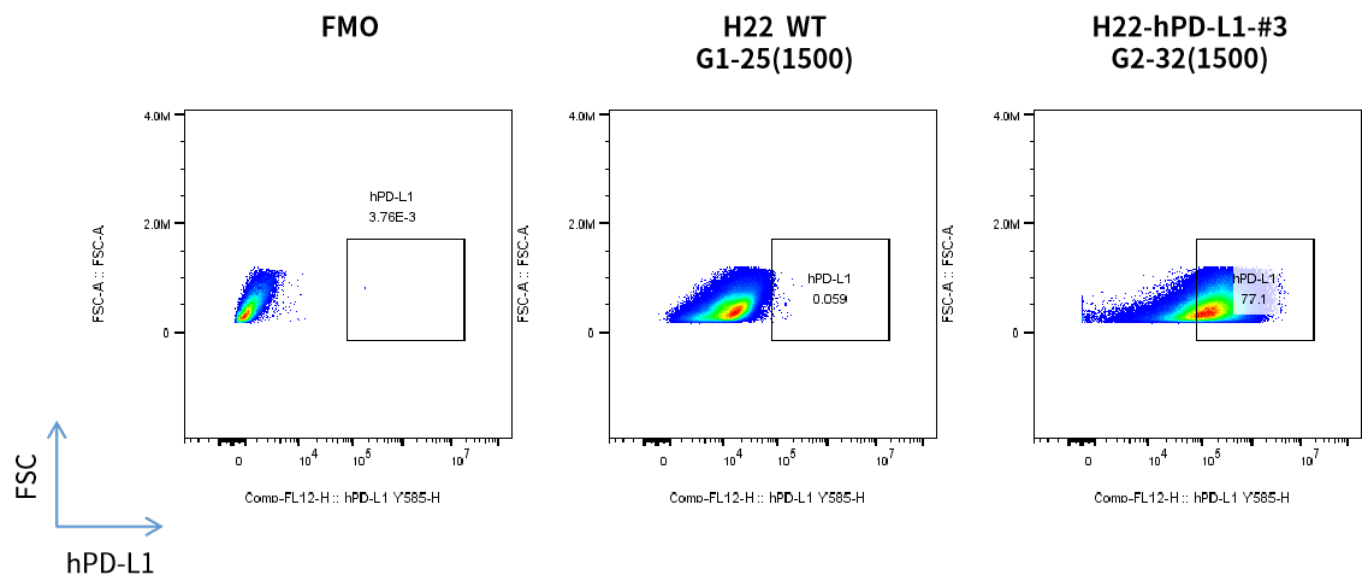


Fig 4. hPD-L1 expression in tumors after in vivo growth of H22-hPD-L1 in wild type hPD-L1(BALB/c) mouse. The tumors were collected at day 21 post tumor cell inoculation.

